



SILVER EAGLE
MANUFACTURING COMPANY

OPERATION PROCEDURES PARTS & SERVICE MANUAL

FEDEX FREIGHT EAST



Model: VAST-20W
Part Number: 16208
Unit Number: D4534 - D5544
VIN: 8546 - 9556

September 2004

SILVER EAGLE
OPERATION PROCEDURES - PARTS & SERVICE MANUAL

TABLE OF CONTENTS

SPECIFICATIONS3

MAINTENANCE PROCEDURES

Operating Silver Eagle Fifth Wheel 5
Converter Dolly Required Maintenance 6
Fifthwheel Maintenance 7
Silver Eagle Fifth Wheel – Jaw Removal 8 – 9
Trip Block Spring Removal / Installation 10
Drawbar Eye Removal / Installation11

PARTS LISTING

VAST-20W (P/N: 16208)
Frame Assembly13
Fifth Wheel 14
Suspension 14
Axle/Frame 14
Electrical 15
Air System16 -17



**SILVER EAGLE
MANUFACTURING COMPANY**

5825 Skyport Way Portland, OR 97218
(800) 547-6792 FAX: (503) 335-2171

Date: 8/23/04
Quotation: 4-1184 Rev 3
Quantity: 1,192 Units
VAST20W Converter Dolly

Customer: FedEx Freight - East
Attention: Dan Umphress

1 FRAME

- 1-001 50,000 psi yield strength 1/4" steel channel drawbar, counter-balanced Huck-bolted frame
- 1-006 Lunette eye polyurethane mounted in steel shock housing
- 1-011 Induction hardened steel eye, 2-3/8" I.D. X 1-5/8" thick with 3/8" thick wall welded shank
- 1-034 Lunette eye height **34"**
- 1-074 Drawbar length, center of eye to centerline of axle **74"**
- 1-221 Two Ergonomic, Power Zone Handles
- 1-347 Unladen 5th Wheel height **47"**
- 1-360 Steel Stiff leg with replaceable rubber foot pad
- 1-369 Betts Registration Holder
- 1-380 Expanded metal drawbar basket for air/electric lines stowage
- 1-410 Purchase and apply custom decals to frame
- 1-504 Dolly number stamped on VIN plate
- 1-702 Install customer-supplied CFE Gate Reader Device on LH (roadside) Drawbar

2 FIFTH WHEEL

- 2-020 36" fabricated steel table 5th Wheel w/ cast steel center, mounted directly above axle-- ROADSIDE (LH) FRONT PULL HANDLE

3 AXLE

- 3-003 Direct drawbar pull on cambered axle w/ 1/16" toe-in-- 77-1/2" track for 102" wide trailer
- 3-126 Meritor TP8671 Axle w/16-1/2" X 7" "Q-Plus" S-cam "Q-Plus" brakes w/Federal Mogul 1226-16 non-asbestos linings w/intermediate s-cam enclosures
- 3-215 Haldex 5-1/2" Automatic, 28 tooth spline.
- 3-223 Type 30, MGM long stroke with "Stroke Alert" indicator
- 3-224 Pro Torque Nut
- 3-315 10-stud cast steel hubs **painted white** & cast iron brake drums for dual hub pilot mount steel disc wheels
- 3-414 Stemco "Guardian" oil seals
- 3-424 PSI Tire Inflation System w/ warning light, Meritor #32712-11-HDG-B Incl Dual Dynamics PSI hubcap

FACTORY PSI SET TO 95
3-521a PennzLube Syn-Plus 00; Fill to bottom of inspection vent

4 SUSPENSION

- 4-005 Spring eyes mounted in shock-absorbing rubber boots
- 4-010 4" wide 7-leaf (plus rebound leaf) 2-stage transverse-mounted leaf springs, 20,000 lb capacity

5 PAINT

- 5-001 Steel grit blast, 8-stage pretreatment, cathodic electrodeposition epoxy primer (E-Coat)
- 5-353 FedEx Freight grey topcoat paint

6 SAFETY CHAINS

- 6-012 One 3/4" X 11-1/2" Grade 70 chains w/ 7 ton hooks

7 AIR SYSTEM

- 7-110 Meritor/WABCO 2S-1M Anti-Lock Brake System w/ Sealco Emergency Valve
- 7-210 Bendix R-12P Pilot Relay Valve, PR-3 Pressure Protection Valve, SC-3 Check Valve
- 7-211 Bendix PP-1 Hostling Valve
- 7-299 Steel air tank, rubber isolated
- 7-305 Black rubber air lines for connection to lead trailer
- 7-307 Phillips Color-coded 12 foot coiled nylon air lines for connection to 2nd trailer
- 7-414 Gladhands - use VelVac Universal locking type #035001
- 7-410 Two frame-mounted dummy gladhand holders

8 ELECTRICAL

- 8-118 Sealed modular harness with 3' extension on lead to front trailer and frame-mounted replaceable 7-way socket. W/ 2 conductor power drop for PSI light
- 8-210 12' SAE J2222 coiled green-jacketed IV cable for connection to 2nd trailer
- 8-326 Four TRUCKLITE #44322R red 6 LED, 4" round, stop/tail/turn lamps flange mounted w/ stainless steel rivets. Two shatter-proof red reflectors at end of frame.
- 8-417 Stainless Steel ground strap between fifth wheel pedestal and rear frame

9 TIRES & WHEELS

- 9-340 (2) 445/50R22.5 Michelin XTE steel belted radial tires
- 9-730 (2) 22.5" X 14" hub pilot mount steel disc wheels (10 stud), 2H White Factory Powder Coat

X MUDFLAPS

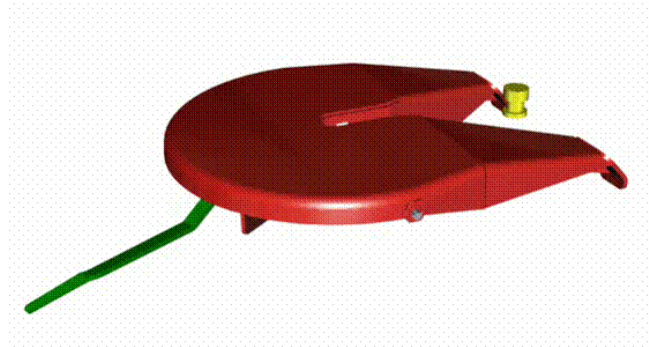
- X-120 24" wide anti-sail/anti-spray smooth black flaps w/o logo -- Koneta or equiv
- X-220 Betts Direct Flex Flap Hangers

SILVER EAGLE
OPERATION PROCEDURES - PARTS & SERVICE MANUAL

MAINTENANCE PROCEDURES

Operating Silver Eagle Fifth Wheel	5
Converter Dolly Required Maintenance	6
Fifthwheel Maintenance	7
Silver Eagle Fifth Wheel – Jaw Removal	8–9
Trip Block Spring Removal / Installation	10
Drawbar Eye Removal / Installation	11

SILVER EAGLE FIFTH WHEEL OPERATING INSTRUCTIONS



Coupling

1. Make sure jaw is locked open and trailer is at proper height.
2. Back dolly slowly under trailer until jaw locks kingpin and handle moves to the center of the dolly.

Uncoupling

1. With vehicle at rest in a relaxed condition and landing gear down, (not being pushed together or pulled apart), pull fifth wheel handle upward and outward to lock the fifth wheel open.
2. Pull dolly slowly out from under the trailer.

Note

If the handle will not pull outward when the vehicle is in a relaxed condition, use landing gear to raise trailer and unload the dolly fifth wheel.

***Contact Silver Eagle Customer Service
for a video tape on coupling and uncoupling twin/double trailers***

SINGLE AXLE CONVERTER DOLLY REQUIRED MAINTENANCE

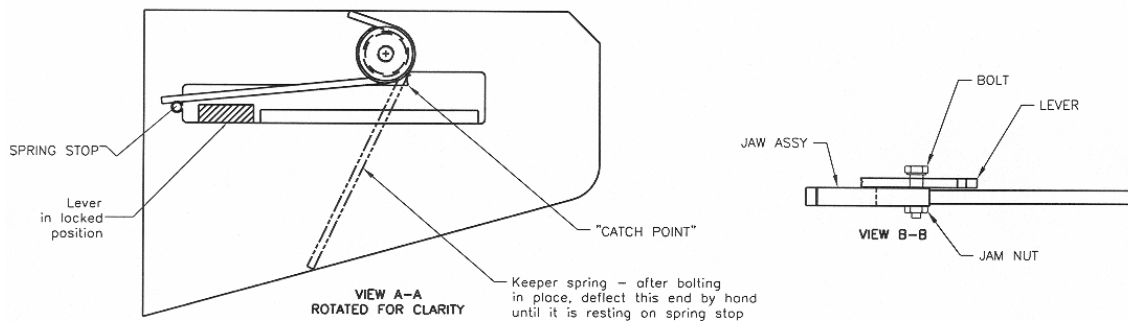
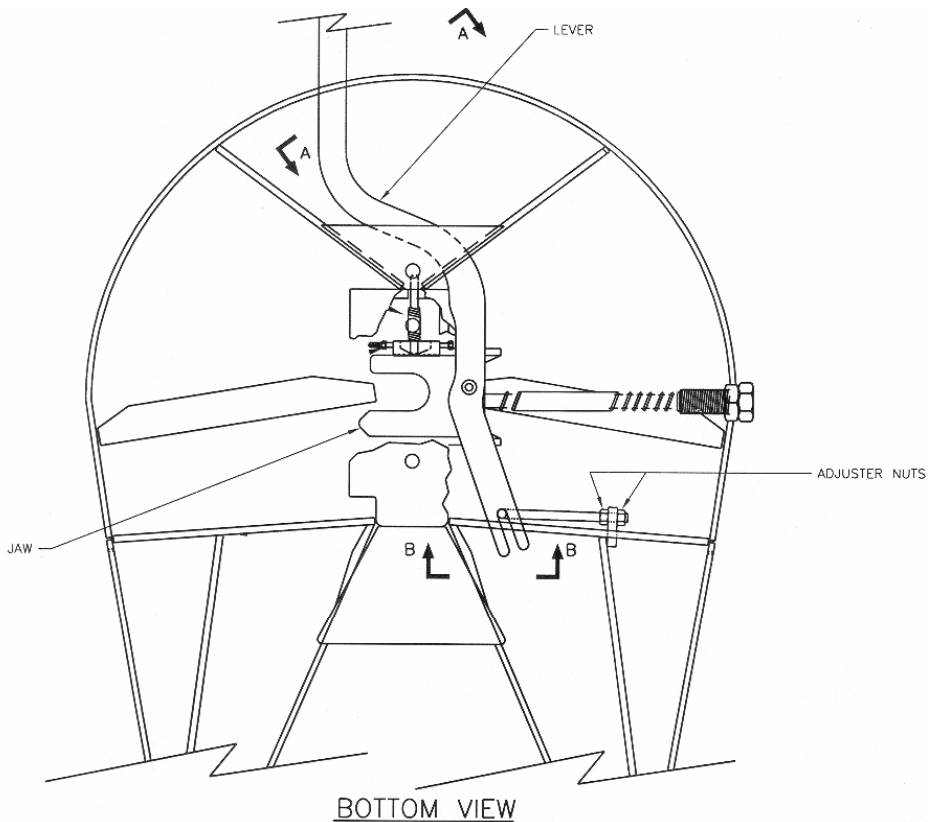


*Refer to illustration, following, for part descriptions.
Refer to Parts Catalog for part numbers.*

First 50 - 100 Miles Consult wheel maintenance instructions. Check wheel nut torque. *Recheck at every dismount.*

Every 1,000 Miles Check axle maintenance instructions. Check axle for oil levels and leaks.

- First 5,000 miles or 30 days
- 1) Tighten the fifth wheel/leaf spring U-bolts to 375 lbs/ft torque. Tighten the axle seat bolts to 420 lbs./ft. torque.
 - 2) Inspect springs for broken leaves and missing or broken spring keepers or keeper bolts.
 - 3) Inspect drawbar eye assembly and tighten shank nut (Item 14) as required. **NOTE:** Tighten shank nut until shock absorber bushings bulge almost to outer edge of shock housing. Be sure to reconnect the shank nut safety wire after tightening shank nut.
 - 4) Tighten all other fasteners as required. Replace any worn, stripped or missing fasteners with appropriate grade and strength.
 - 5) Inspect all air lines and electrical cables for chafing, kinking, leakage or damage.
 - 6) Inspect fifth wheel table assembly for bent, worn, cracked or excessively loose parts. Replace any cracked parts and worn or missing fasteners, readjust or tighten fasteners as necessary.



PERFORMANCE TESTING/ADJUSTMENTS

1. Pull the lever into the uncoupling position. This is where the lever is pulled out and held up by the "Catch Point" indicated in view A-A. If the lever won't stay up, the adjuster nuts on the adjuster at the back end of the lever are probably screwed in too far. Back them off until lever will stay on the catch point.
2. Test the 5th wheel for proper coupling with a test kingpin. Test with the lever in the uncoupling position. If it doesn't release from the "catch point", then the adjuster nuts probably need to be screwed in further.
3. With the jaw closed or in the coupled position, pick the lever up and out of the locked position. Hold the lever just shy of falling back into the locked position. Release the lever to ensure that it passes freely into the locked position.
4. When 5th Wheel functions properly, tighten the lever adjuster locknut securely.

ADJUSTMENT OF LEVER & JAW ASSEMBLY

1. Release Jam Nut (refer to View B-B)
2. Tighten bolt until lever is secure against Jaw assembly.
3. Loosen bolt ¼ turn or until assembly moves freely.
4. While holding bolt secure from turning, tighten jam nut.

Silver Eagle Fifth Wheel Maintenance

Silver Eagle Fifth Wheel Maintenance Jaw Removal (Refer To Diagram D)

1. Make sure the jaw is closed. If not, it can be closed by pushing the trip block (16) forward with a rod or bar. The jaw should be all the way across the center casting (the handle will be in). **Caution: Keep your hands clear of the jaw, it is spring-loaded.**
2. Using a pair of vise grips, clamp the trip lock rod in front of the guide hole on 5th wheel center casting (16) so as to prevent it from moving aft when jaw is removed.
3. When removing the guide bolt (25), applying an anti-seizing compound to the exposed threads often makes the removal process easier.
4. Remove the jaw spring (22) by pulling it through the push rod guide nut.
5. Pull the fifth wheel lever (19) all the way out.
6. Disconnect the fifth wheel lever (19) from the jaw/pushrod assy (18).
7. Remove the jaw/pushrod assy (18) from the 5th wheel table.
8. Lubricate and install the replacement jaw/pushrod assy (18) in the table making sure the pointed tine on the jaw is to aft end of the dolly
9. Slide jaw/pushrod assy in place without spring. Align hole in jaw with mating hole in lever.
10. Apply loctite 242 medium strength thread adhesive or equivalent to cleaned threads of capscrew (23) and jam nut.
11. Thread capscrew (23) into jaw/pushrod assy (18) with two washers (20) between the capscrew head & the lever. Torque the jaw bolt to approximately 70 ft-lbs. The lever should have minimum clearance to allow free rotation against the jaw without binding through its full travel.
12. Tighten the jam nut (1/6-1/4) turn – after contacting the jaw while ensuring the capscrew does not turn.
13. Slide pushrod spring (22) on push rod of the jaw
14. While holding lever back far enough so the jaw pushrod protrudes into the guide nut, tighten the guide nut (25) securely
15. Remove the vise grips from the trip block rod.
16. Test the table to ensure the jaw opens and closes properly.

Jaw Spring Removal/ Reassembly (item 22)

- Complete steps 1 through 4 of Jaw Removal.
- Completes steps 13 through 17.

Lever Removal/ Reassembly (item 19)

- Remove lever (19)
- During Reassembly make sure the 2" jam nut is jammed to the 2" standard nut.
- Test the table to ensure the jaw opens and closes properly.

Lever Removal/ Reassembly

- Complete step 1 & 6 of jaw removal
- Install new lever
- Complete steps 10 thru 12 of jaw removal.
- Test the table to ensure the jaw opens and closes properly.

Trip block/ Trip block Spring Removal/ Reassembly

- Complete steps 1 through 5
- Remove the 3/8 bolt, 3/8 lock nut and the two 3/8 washers
- Release the vise grips. **Caution: The trip block is under spring Pressure. Keep hands clear of it when releasing vise grips.**
- Remove the trip block (16) and the trip block spring through the throat of the 5th wheel table. **Caution: The jaw is under spring pressure. Use pliers or another suitable device to remove old trip block and spring.**
- Install the new trip block and / or trip block spring in the throat of the 5th wheel table. Caution: The jaw is under spring pressure. Use pliers or another suitable device to install new trip block and spring.
- Push the trip block (16) as far forward as possible, with a rod or bar and reinstall vise grips to the trip block rod of item (16) in front of 5th wheel center casting.
- With anti-seize applied to the 3/8 bolt, reinstall the bolt, two washers and lock nut making sure the trip block can freely move fore and aft when pushing on it with a rod or bar (leaving the lock nut 1/6"-3/32" from being fully tightened should work well).
- Release the vise grips. **Caution: The trip block is under spring pressure. Keep hands clear of it when releasing vice grips.**
- Test the table to ensure the jaw opens and closes properly.

DRAWBAR EYE REMOVAL & INSTALLATION INSTRUCTIONS

1. Place dolly under a trailer. Set brakes on trailer and dolly.
2. Remove safety wire if present, on 1283 nut.
3. Remove 1283 nut and 1193 washer or 15315 and 15660
4. Use forklift or eye removal tool (Silver Eagle part no. 15314) to pull against drawbar eye and remove it from the shock housing.
5. Clean any debris from inside of shock absorber bushing and lubricate with rubber lubricant or soapy water
6. Lubricate the shock absorber bushing with rubber lubricant or soapy water and install into the shock housing.
7. Lubricate the shank of the new drawbar eye with rubber lubricant or soapy water and install into the shock housing.

NOTE: The shank of the drawbar eye will only be able to be pushed into the shock absorber bushings a little way by hand. There are three methods of pushing it in the final amount:

- (1) Place the dolly under a trailer or up against a solid wall. Set the brakes on the trailer and dolly. Use a forklift or hostler to push against the drawbar eye until it is seated on the shock absorber bushing.
 - (2) Use a sledge hammer to hammer on the end of the drawbar eye until it is seated in the shock absorber bushing.
 - (3) Use the eye removal tool as #4 above.
8. After the drawbar eye is in place, clean the threads on the shank.
VERY IMPORTANT: Coat the threads with Never-SeeZ, pipe compound, or some other similar product. to prevent corrosion and keep the nut from seizing.
 9. Install a new washer and thread the nut onto the shank.
 10. Tighten the nut until the rubber shock absorber bushing bulges toward the outer edge of the shock housing at the corners – this is approximately 400-500 ft/lbs of torque.

NOTE: Shock absorber bushing may split if tightened excessively.

11. Install the safety/ground wire through one side of the nut and shank. This is accomplished by drilling through one side of the nut and shank providing a hole for the bolt and nut securing the safety wire. This completes the ground circuit and prevents the nut from backing off
12. Periodically check the tightness of the nut and adjust as necessary. You should not be able to turn the lunette eye by hand at any time.

SILVER EAGLE OPERATION PROCEDURES - PARTS & SERVICE MANUAL

PARTS LISTING

VAST-20W (P/N: 16208)	
Frame Assembly	13
Fifth Wheel	14
Suspension	14
Axle/Frame	14
Electrical	15
Air System	16-17

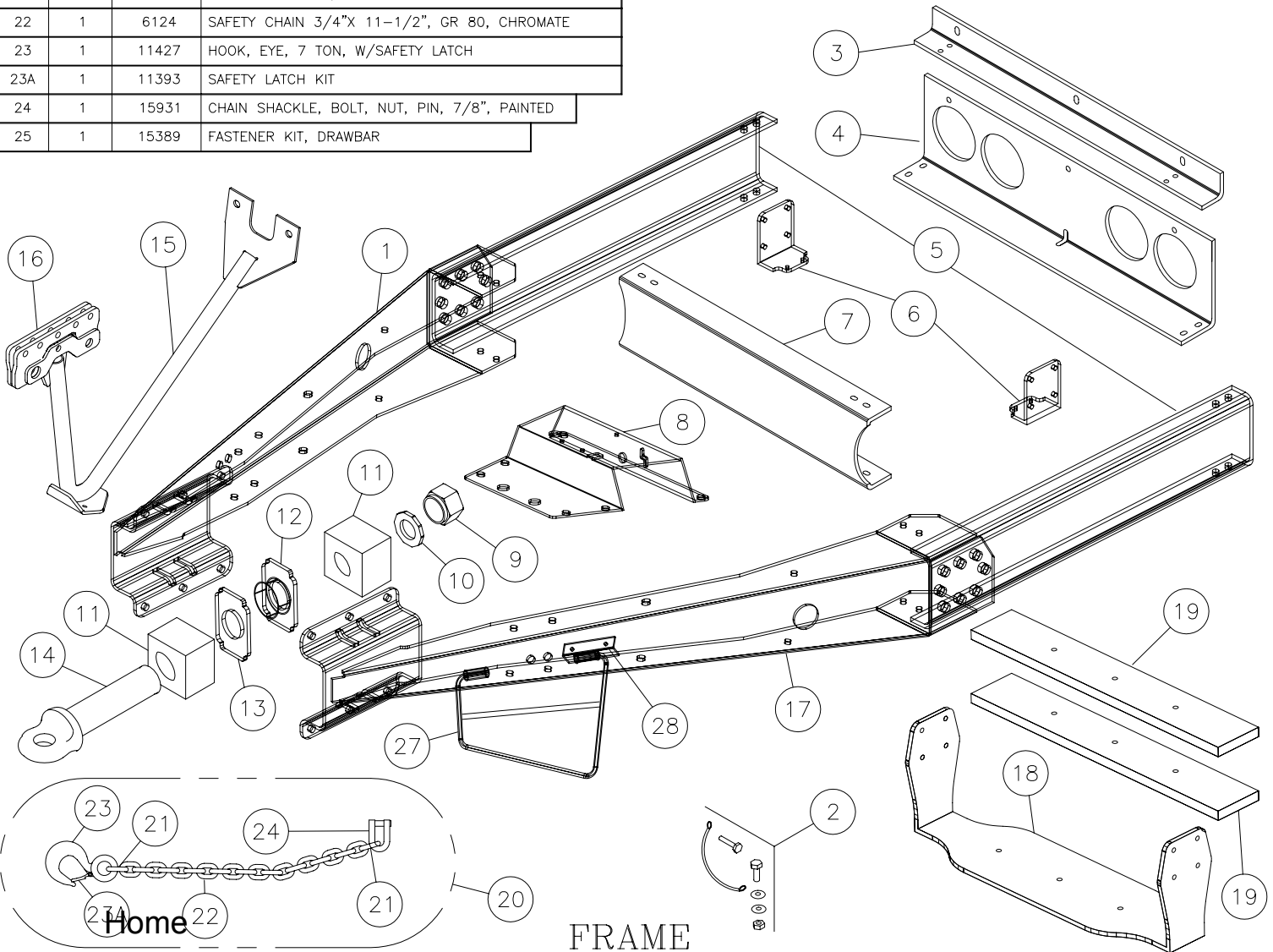
MODEL VAST-20W PART NUMBER 16208

FRAME ASSEMBLY			
ITEM	QTY	PART No.	DESCRIPTION
1	1	16516	DWB KIT, VA, +5.5, CS, FEDEX FREIGHT EAST
2	1	12590	INSTALLATION, STAINLESS GROUND WIRE ASSY
3	1	11092	ADAPTER, TAILPLATE
4	1	15416	TAILPLATE WELDMENT
5	2	13704	SIDE CHANNEL, 74" VA, W/ BALLAST HOLES
6	2	13348	AIR TANK MOUNTING BRACKET
7	1	11374	CROSSMEMBER, 1-PC DWB
8	1	14866	VALVE PLATE/FASTENERS
9	1	15315	NUT, SHANK, HEX
10	1	15660	WASHER, SHANK, DRAWBAR EYE, 1/2", HEX NUT
11	2	12170	BUSHING, SHOCK ABS RECT POLYURETHANE
12	1	9714	REINFORCED DIVIDER, SHOCK HOUSING
13	1	9440	DIVIDER, SHOCK HOUSING
14	1	1171	EYE & SHANK 3/8, HRDN
15	1	15672	INSTL, STIFF LEG, SINGLE SAFETY CHAIN, VA
16	1	15668	INSTALLATION, BRACKET, SINGLE SAFETY CHAIN,VA
17	1	16514	DWB KIT, VA, +5.5, RS, FEDEX FREIGHT EAST
18	1	13456	BALLAST HANGER W/FASTENERS
19	1	14868	BALLAST/FASTENERS
20	1	15932	SAFETY CHAIN ASSY, 3/4", GR 80, 7-TON, SINGLE
21	2	5317	LINK, LOCKING, 3/4", GR 8
22	1	6124	SAFETY CHAIN 3/4"X 11-1/2", GR 80, CHROMATE
23	1	11427	HOOK, EYE, 7 TON, W/SAFETY LATCH
23A	1	11393	SAFETY LATCH KIT
24	1	15931	CHAIN SHACKLE, BOLT, NUT, PIN, 7/8", PAINTED
25	1	15389	FASTENER KIT, DRAWBAR

FRAME ASSEMBLY			
ITEM	QTY	PART No.	DESCRIPTION
27	2	14745	POWER ZONE HANDLE WLDMT, FEDEX FRT
28	2	14746	MOUNTING BRACKET, DRAWBAR HANDLE
29	1	15388	FASTENER KIT, TAILPLATE ASSY

FRAME ACCESSORIES			
ITEM	QTY	PART No.	DESCRIPTION
31	1	15509	FLAP HANGER, DIRECT FLEX, BETTS, GALV
32	1	16320	FLAP, ANTI-SPRAY/SAIL BLACK RS (NOT SHOWN)
33	1	16321	FLAP, ANTI-SPRAY/SAIL BLACK CS (NOT SHOWN)

Diagram A



MODEL VAST-20W PART NUMBER 16208

AXLE/FRAME ASSEMBLY			
ITEM	QTY	PART No.	DESCRIPTION
1	2	9437	SPACER, UPPER, SIDE SUPPORT ASSY, VA-DOLLY
2	2	10168	INNER SUPPORT, VA
3	8	9558	CAPSCREW, 7/8-14 UNF X 2 3/4, HX, GR 8, PLTD
4	8	9559	NUT, 7/8-14 UNF, HX, GR 8, PLTD
5	16	9485	WASHER, 7/8, FLAT, A325 (F436), HRDN, PLTD
6	2	10236	SPACER, LOWER, SIDE SUPPORT ASSY, VA-DOLLY
7	2	9439	SPRING PLATE, SIDE SUPPORT ASSY, VA-DOLLY
8	2	10167	OUTER SUPPORT, VA
9	6	9481	CAPSCREW, 3/4-16 UNF X 2 1/4, HX, GR 8, PLTD
10	6	9483	NUT, 3/4-16 UNF, METAL LOCK, HX, GR 8, PLTD
11	12	3367	WASHER, 3/4, FLAT, F436, HRDN, PLTD
12	2	10406	WELDMENT, AXLE SEAT, 47", VA
FIFTH WHEEL			
15	1	13830	5TH WHEEL TBL ASSY 10D FRONT PULL LH (STD)
16	1	3432	TRIP BLOCK KIT, LH, W/SPRING & FASTENERS
17	2	8820	NUT, 1/2-13 UNC, TOP LOCK, JAM, HX, GR 5, PLTD
18	1	8944	JAW ASSY, HUCKED PUSHROD, LH
19	1	10056	LEVER, JAW, LH, SERIES 60
20	1	1150	WASHER, 1/2", FLAT, SAE, PLTD
21	1	1601	NUT, 1/2-13 UNC, HX, FIN, GR 5, PLTD
22	1	8368	SPRING, JAW, SERIES 10-60, E-COATED
23	1	4131	CAPSCREW, 1/2-13 UNC X 2 1/2, HX, GR 5, PLTD
24	1	10076	ANCHOR, LEVER ADJUSTMENT, 5TH WHEEL, FRONT PULL
25	1	1342	GUIDE, PUSHROD, SEMCO TABLE, 40-60
26	1	13381	LEVER BUSHING
27	1	13460	SECURITY SPRING FOR LEVER W/ POST AND FASTENERS
28	1	13462	LEVER ADJUSTER KIT
SUSPENSION			
30	4	1204	RUBBERS, SPRING BOOT, PAIR
31	4	1645	U-BOLT ASSY, 1 X 4 X 8, RT, W/NUTS & WASHERS (2 per spring)
32	2	3539	SPRING ASSY, 7 LEAF W/LONG REBOUND
33	2	13461	PRESSURE PLATE, 4", MULTI-USE (1 per spring)
34	2	1607	DOUBLE BOOT HOUSING, DUCTILE IRON A536
35	12	1691	CAPSCREW, 5/8-11 UNC X 2 1/2, HX, GR 5, PLTD
36	12	1172	WASHER, 5/8, FLAT, F436, HRDN, PLTD
37	12	1164	NUT, 5/8-11 UNC, METAL LOCK, HX, GR C, PLTD
39	2	15357	BOLT, 1/2-13 UNC, 6 3/8 LGTH, GR 8, BOOT HSG
40	2	3369	WASHER, 1/2", FLAT, WIDE, PLTD
41	2	1942	NUT, 1/2-13 UNC, METAL LOCK, HX, GR C, PLTD

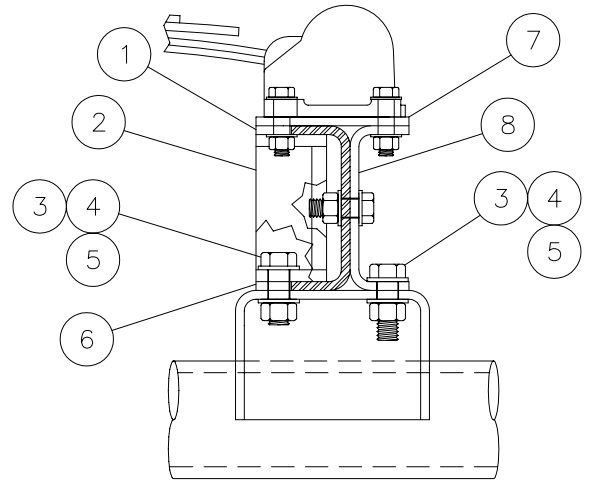


Diagram B

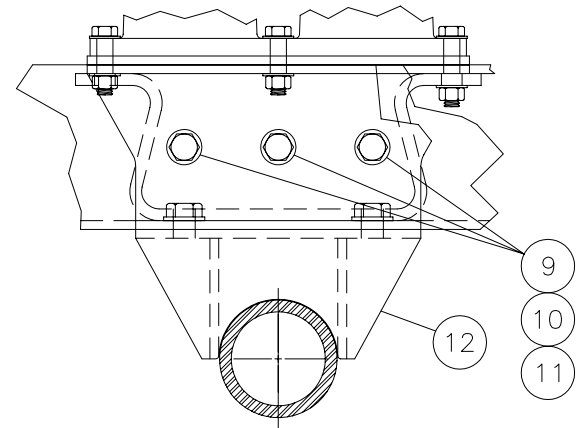


Diagram C

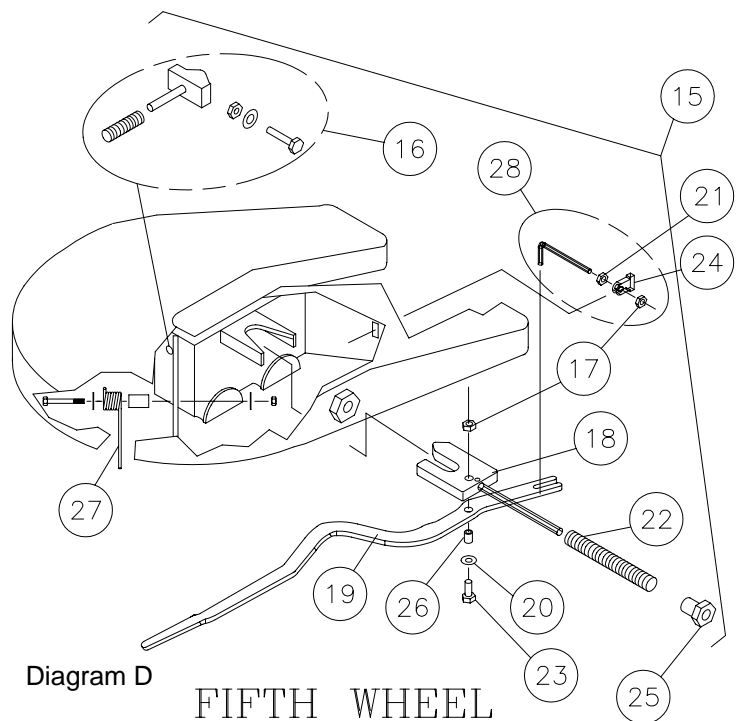
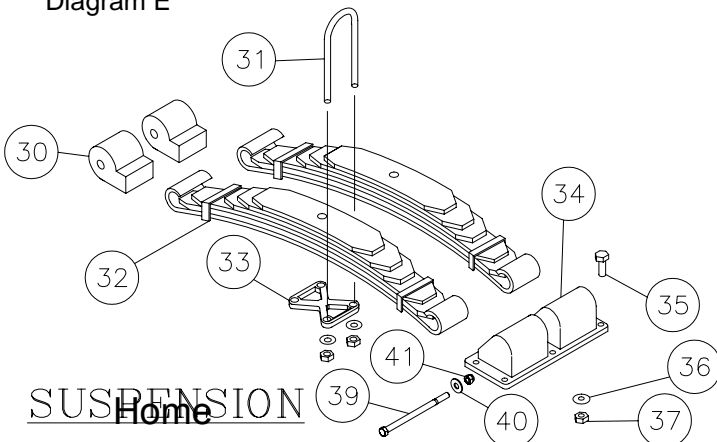


Diagram D

Diagram E



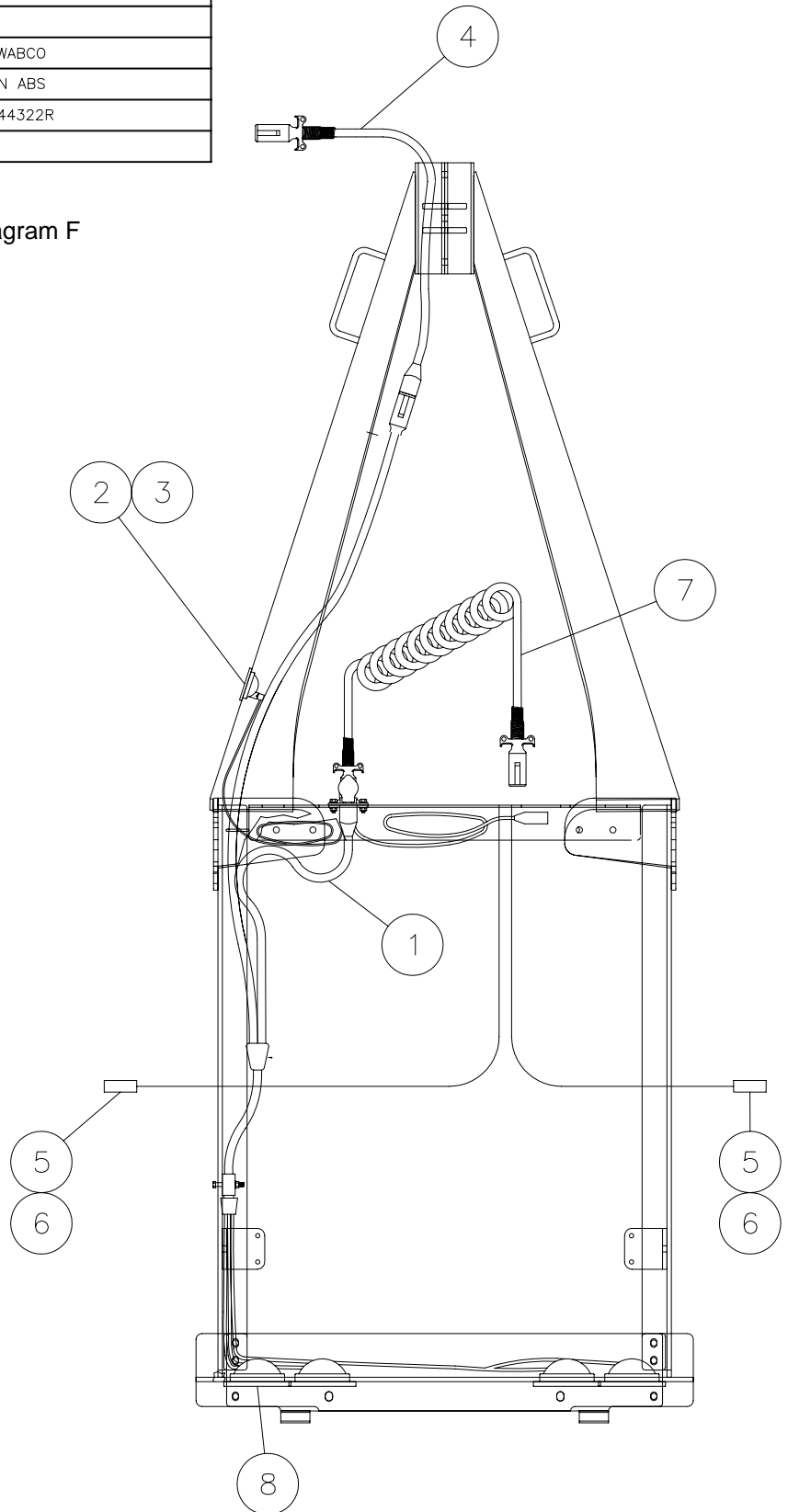
SUSPENSION

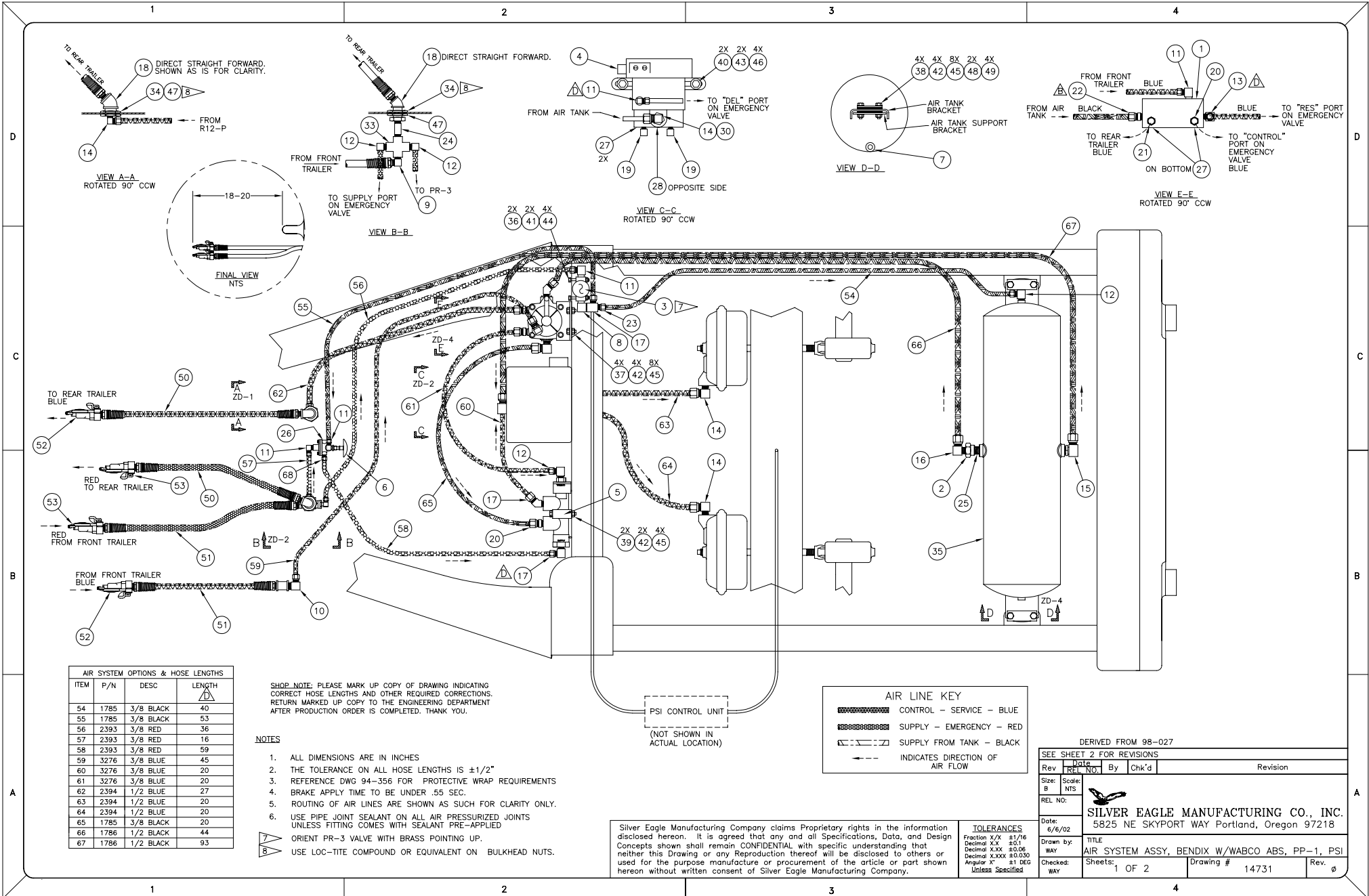
FIFTH WHEEL

MODEL VAST-20W PART NUMBER 16208

ELECTRICAL			
ITEM	QTY	PART No.	DESCRIPTION
1	1	15130	HARNESS FRONT, "Y", SEALED, 96" 3' EXT ABS PSI LT
2	1	9562	LENS, AMBER, TRUCKLITE, ABS
3	1	9563	GROMMET, LAMP, TRUCKLITE, MODEL 30
4	1	13641	LIGHT CORD, 3' EXT
5	2	10080	SENSOR ABS, 1 FT CABLE, MERITOR/WABCO
6	2	10081	CLIP ABS WHEEL SPEED SENSOR MERITOR/WABCO
7	1	10327	CABLE, 7-WAY COILED, 12' W/PLUGS GREEN ABS
8	4	13280	LAMP RED 4" RD 6-DIODE LED FLG TLITE 44322R
9	1	15571	HARNESS, REAR, 4-LGT, AMP CONNECTOR

Diagram F






1	2				3	4				
	ITEM	QTY	PART No.	DWG No.	DESCRIPTION	ITEM	QTY	PART No.	DWG No.	DESCRIPTION
	41	2	1401		NUT, 1/4-20 UNC, METAL LOCK, HX, GR C, PLTD			10213	98-027	AIR SYSTEM ASSY, BENDIX W/WABCO ABS, PP-1
	42	10	1646		NUT, 5/16-18 UNC, NYL INS, HX, PLTD	1	1	6688		VALVE, RELAY, R-12P W/BRACKET
	43	2	1390		NUT, 3/8-16 UNC, NYL INS, GR5, HX, PLTD	2	1	1772		VALVE, CHECK, SC-3, 1/2 NPT, BENDIX
	44	4	1374		WASHER, 1/4, SAE, PLTD	3	1	6294		VALVE, PRESSURE PROTECTION, PR-3, BENDIX
	45	20	1454		WASHER, 5/16, SAE, PLTD	4	1	13738		VALVE, RELAY/ABS CONTROL MERITOR/WABCO, PLC
	46	4	1273		WASHER, 3/8, SAE, PLTD	5	1	9858		VALVE, EMERGENCY CONTROL 110376 SEALCO
	47	2	2653		WASHER, 1, SHAKEPROOF LOCK, INT, PLTD	6	1	1278		VALVE, PUSH-PULL, PP-1
	48	2	7420		RETAINING PLATE, ISO-PAD, AIR RESERVOIR	7	1	1775		VALVE, DRAIN, LEVER, 150 PSI, 1/4 NPT-M
	49	4	7419		ISO-PAD, AIR RESERVOIR	8	1	2997		ELBOW, ST, 90, 1/4 NPT-M X 1/4 NPT-F, BR
	50	1	4081		HOSE, AIR, COILED, 12' WORKING LENGTH, 6"/12" PAIR	9	1	6332		ELBOW, ST, 90, 3/8 NPT-M X 1/4 NPT-F, STL
	51	2	6213		HOSE, AIR, 3/8 X 49, RUBBER, 1/4 X 1/2 CONN	10	1	13610		ELBOW, 90, 3/8T X 1/4 NPT-F, BR
	52	2	5854		GLADHAND, SERV., W/FULL FACE BLUE SEAL	11	5	1804		ELBOW, 90, 3/8T X 1/4 NPT-M, BR
	53	2	5855		GLADHAND, EMER., W/FULL FACE RED SEAL	12	3	1805		ELBOW, 90, 3/8T X 3/8 NPT-M, BR
	54	1	1785		TUBING, NYLON, AIRBRAKE, 3/8, BLACK	13	1	4713		ELBOW, 90, 3/8T X 1/2 NPT-M, BR
	55	1	1785		TUBING, NYLON, AIRBRAKE, 3/8, BLACK	14	4	1806		ELBOW, 90, 1/2T X 3/8 NPT-M, BR
	56	1	2393		TUBING, NYLON, AIRBRAKE, 3/8, RED	15	1	1807		ELBOW, 90, 1/2T X 1/2 NPT-M, BR.
	57	1	2393		TUBING, NYLON, AIRBRAKE, 3/8, RED	16	1	9145		ELBOW, 90, 1/2T X 1/2 NPT-F, BR.
	58	1	2393		TUBING, NYLON, AIRBRAKE, 3/8, RED	17	3	1810		ELBOW, 45, 3/8T X 3/8 NPT-M, BR
	59	1	3276		TUBING, NYLON, AIRBRAKE, 3/8, BLUE	18	2	2846		ELBOW, 45, 1/2 NPT-F, GALV
	60	1	3276		TUBING, NYLON, AIRBRAKE, 3/8, BLUE	19	2	1811		ELBOW, 45, 1/2T X 3/8 NPT-M, BR.
	61	1	3276		TUBING, NYLON, AIRBRAKE, 3/8, BLUE	20	4	1817		CONNECTOR, 3/8T X 3/8 NPT-M, BR.
	62	1	2394		TUBING, NYLON, AIRBRAKE, 1/2, BLUE	21	1	1819		CONNECTOR, 1/2T X 3/8 NPT-M, BR
	63	1	2394		TUBING, NYLON, AIRBRAKE, 1/2, BLUE	22	1	1812		ELBOW, 45, 1/2T X 1/2 NPT-M, BR.
	64	1	2394		TUBING, NYLON, AIRBRAKE, 1/2, BLUE	23	1	1808		TEE, MALE RUN, 3/8T X 1/4 NPT-M, BR.
	65	1	1785		TUBING, NYLON, AIRBRAKE, 3/8, BLACK	24	1	10485		NIPPLE, 3/8 NPT-M X 3, SCH. 80
	66	1	1786		TUBING, NYLON, AIRBRAKE, 1/2, BLACK	25	1	1824		NIPPLE, HX RED, 3/4 NPT-M X 1/2 NPT-M, ANOD/STL
	67	1	1786		TUBING, NYLON, AIRBRAKE, 1/2, BLACK	26	1	1839		PLUG, CSK HX, 1/4 NPT-M, STL, GALV
	*	1	13739		CABLE ABS POWER 1 METER MERITOR/WABCO	27	4	1840		PLUG, CSK HX, 3/8 NPT-M, STL, GALV OR BLACK OXIDE
	*	2	10079		CABLE ABS SENSOR EXTENSION 6 FT MERITOR/WABCO	28	1	1843		PLUG, CSK HX, 3/4 NPT-M, STL, GALV
	68	1	1816		CONNECTOR, 3/8T X 1/4 NPT-M, BR	29				
	*	1	5373		DECAL, HOSTLING VALVE, FOR DOLLIES	30	1	1798		BUSHING, 3/4 NPT-M X 3/8 NPT-F, BR
						31				
						32				
						33	1	2852		CROSS, 3/8 NPT-F, BR
						34	2	1181		FITTING, BULKHEAD, BR
						35	1	8913		AIR RESERVOIR, SIDE DRN PWDR COAT MIDWEST 1425 CI
						36	2	8311		CAPSCREW, 1/4-20 UNC X 2 3/4, HX, GR 5, PLTD
						37	4	1322		CAPSCREW, 5/16-18 UNC X 1, HX, GR 5, PLTD
						38	4	7901		CAPSCREW, 5/16-18 UNC X 1 3/4, HX, GR 8, PLTD
						39	2	3538		CAPSCREW, 5/16-18 UNC X 2 1/2, HX, GR 5, PLTD
						40	2	2387		CAPSCREW, 3/8-16 UNC X 1 3/4, HX, GR 5, PLTD

* ITEMS NOT SHOWN

DERIVED FROM 98-027

Silver Eagle Manufacturing Company claims Proprietary rights in the information disclosed hereon. It is agreed that any and all Specifications, Data, and Design Concepts shown shall remain CONFIDENTIAL with specific understanding that neither this Drawing or any Reproduction thereof will be disclosed to others or used for the purpose manufacture or procurement of the article or part shown hereon without written consent of Silver Eagle Manufacturing Company.

TOLERANCES
 Fraction X/X ±1/16
 Decimal XX ±0.1
 Decimal XXX ±0.06
 Decimal XXXX ±0.030
 Angular ° ±1 DEG
 Unless Specified

A	9/3/03	GCW	GCW	UPDATE PARTS LIST
Rev	Date	By	Chk'd	Revision
Size:	Scale:			
B	NTS			
Date	 SILVER EAGLE MANUFACTURING CO., INC. 5825 NE SKYPORT WAY Portland, Oregon 97218			
REL NO:	TITLE: AIR SYSTEM ASSY, BENDIX W/WABCO ABS, PP-1, PSI			
Drawn by:	Sheets: 2 OF 2		Drawing # 14731	Rev. 0
Checked:	WAY			