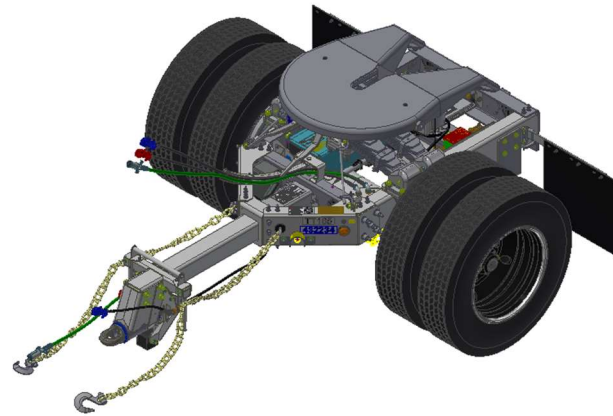


OPERATION PROCEDURES PARTS & SERVICE MANUAL

As built for
UPS



**SILVER EAGLE MODEL TST20
PART #30500**



5825 NE Skyport Way - Portland, OR 97218
(503) 281-0727 - (800) 547-6792 - (503) 335-2171 Fax
www.silvereaglemf.com

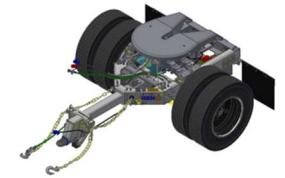
Table of Contents

MAINTENANCE PROCEDURES

Specifications	3 – 7
Operating Silver Eagle Fifth Wheel	8
Converter Dolly Required Maintenance	9
Silver Eagle Fifth Wheel – Jaw Removal	10 – 11
Trip Block Spring Removal / Installation	12
Drawbar Eye Removal / Installation	13
System Schematic	14

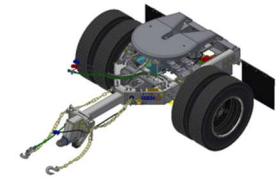
PARTS LISTING

Master Assembly.....	15 – 16
Major Assembly.....	17
Air Assembly.....	18 – 19
Electrical Assembly.....	20
Hydraulic System Assembly.....	21 – 22
Axle Assembly.....	23
Fifth Wheel Assembly.....	24 – 25



Vehicle Make: Silver Eagle
Model Year: 2016
 Date: June 25, 2015
 Updated: Gary Gaussoin

Pilot Date: July 1, 2015



UPS SPEC NUMBER: 15 - 60

SILVER EAGLE PART # 30500

GENERAL:

MAKE & MODEL: TST-20NU

LENGTH: OVERALL: 119"

WIDTH: 96" 71-1/2" track

FIFTH WHEEL HEIGHT: 47-1/2"

DRAWBAR LENGTH: 78" Extended 50" Retracted Centerline Eye to Axle

HITCH HEIGHT: 17"

OPERATIONAL USE: HIGHWAY

GAWR: 20,000#

GVWR: 20,000#

TARE WT: 2,995# maximum

FRAME:

DRAWBAR: 1/4" A572-50 Steel drawbars - Huck bolted (Bob Tail) - Gr. 8, 1/2" & 20mm

SIDEFRAME: 3/8" A572-50 Side frame, crossmembers, and tailframe

SHOCK HSG: Fabricated, removable gooseneck w/ Gr. 8 bolts

EYE: Silver Eagle #1171 w/round polyurethane bushings #12171 & hex nut #15315

SLIDING DRAWBAR: 4x4x1/4 Square tubing w/ low friction plastic plate liners inside square housing 28" travel

Pneumatically operated Locking Hoop with position sensor

LIFT HANDLES: (1) Fixed handle above housing - (pair) one flip out handle at each side of housing

COUNTERBALANCE: Mounted under tail frame (two 1" Plates)

TAILPLATE: 4) Trucklite round LED lamps riveted & guard for license lamp

LEG: Replaceable rubber block mounted to drawbar supported brackets

Note: tongue weight not to exceed 65lbs w/ hooks on the handles

5TH WHEEL: Silver Eagle, w/extended ramp & end cap plate

Short Lever Roadside release w/ hitch pin through adjusting rod

Tilt Limiting Cables

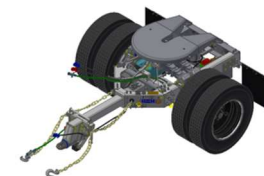
SUSPENSION: Polyurethane boot, #12172 mounted, transverse type

Use "Anti-Seize" on U-Bolts and fasteners

SPRINGS: 7-leaf, 2 stage, 38-1/2" center of eye to center of eye

SAFETY CHAINS: (2) 5/8" grade 70 chains, Zinc Dichromate, U-Bolt mounted w/ protector & Housing attachment

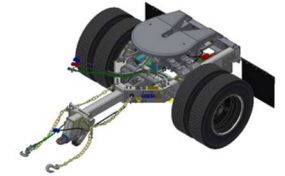
(2) 5 ton clevis hooks Zinc Dichromate finish

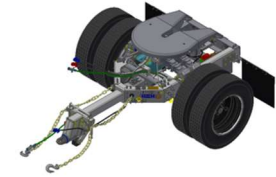


FRAME (cont.):			
AXLE:	Make-Meritor	Model-TN4671 (5" dia.)	Track - 71.5"
	Capacity - 20,000#		Spring Centers - 38-1/2"
	Cambered, set for 1/16" toe-in (+/- 1/32") & 0 deg. Thrust Angle		
	No Camshaft Enclosure		
S-CAMS:	Q+	28 spline	length: 20.406"
	Part No.:	2210S8391 (Right)	2210T8392 (Left)
	ABS sensor blocks		
SLACK ADJUSTERS:	Haldex S-ABA 6" slack, 28 spline		
	Slack adjusters must be installed to manufacturers specifications, including, but not limited to assuring proper pushrod length to attain approximately 90 degree angle when park brake is applied.		
	Should be 107 degrees when brakes are released. Stroke should not exceed 2" on application.		
	Slack adjusters and brake cam bushings must be fully lubricated after installation.		
BEARINGS & RACE:	Make - General	Option - Timken, Stemco, or SKF	
	Outer bearing HM212011/HM212049		
	Inner bearing HM218210/HM218248		
	Note: bearing and race to be from the same manufacturer		
SPINDLE NUT	STEMCO Pro-Torq #447-4743		
HUBS:	* This build	Walther EMC cast iron hub and cast iron drum assembly	w/ ABS tone ring
		Option: Webb	Hub to be e-coated and balanced
DRUMS:	* This build	Walther EMC cast iron hub and cast iron drum assembly	w/ ABS tone ring
		Option: Webb, Motor Wheel, Meritor	Hub to be e-coated and balanced
STUDS:	10 each mounted on 11.25" bolt circle, Hub Piloted		
HUB CAPS:	* This build	SKF #1644 - Black with magnetic plug	Option: Stemco DEFENDER
HUB OIL:	Synthetic - MOBILUBE SHC 75W90		
OIL SEALS:	Federal Mogul # M380025TXO - 5 Star Gold seal - hub installed		
	Seals must be press installed with approved method - Do not drive with hammer		
BRAKE LINING:	Q+ Abex - 3030-197 OEM & 6008-1(Meritor SOR-215)	Size - 16.5x7x.75	
	Q+ pull-back springs		
CHAMBERS:	Make: Haldex	Type 30 Service Chambers Part #127300116	Life Seal - Long Stroke
	Set brake chambers to 107 degrees when brakes are not applied. Chambers should be approximately 90 degrees with brakes applied and no more than 2" of stroke.		
	Must be long stroke actuator.		
TIRES:			
TIRES:	* This build	Yokohama RY587	TUBELESS SIZE: 295/75R22.5 PLY RATING: 14(G)
	* Tires should be "SmartWay" approved.		
	Tires to be inflated to 100 psi		
	Dimple to the deep dish side of the wheel along with the DOT date		
Match mount if capable			

RUNNING GEAR:

WHEELS:	* This build Option: Maxion # 90262BK
	Steel - powder coated black
	Outboard mount, (5) hand hole Wheel offset - 6.625"
	Do not paint powder-coated wheel except exposed rim edge to be painted silver
	Apply grease to hub piloted wheel pads before assembly
	Position hub pilot pad to 12 o'clock position before installing wheels
VALVE STEMS:	Myers TR572-F19 (31 degree bend) with Alligator V2B flow through valve stem cap - part #21534
	torque to 35-55 inch-pounds
(Option) VALVE STEMS	Dill, Haltec or Schrader equivalent
ABS SYSTEM:	Bendix 2 sensor - 1 modulator, Premium TABS-6 valve, service relay valve
	Bracket mounted includes odometer & PLC4TRUCKS
	Specially programmed to coordinate with T-Dolly controller for vehicle speed.
	ECM to be programmed preceding with 4 zero's, followed by the unit number
PRESS. PROTECT. VALVE:	Sealco For Locking Hoop
PRESS. PROTECT. VALVE:	Sealco for Air Brake Reservoir
SYNCRO VALVE:	Bendix SV-4 # w/ #28435 breather on exhaust port
PUSH/PULL VALVE:	Sealco #17620 - No pop-off pressure feature with steel stem
	Install push pull protection bracket
PILOT RELAY VALVE:	Bendix R-12P #109424
EMERG. CONTROL VALVE:	Sealco #110376
RESERVOIR:	(1) Make: Hoosier with side drain
DRAIN VALVE:	(1 ea.) Tramec #35000 with 1/8" cable plastic coated routed to roadside frame
	by front of tire
TUBING:	Parker, Red for emergency, Blue for Service, Black for supply from reservoir
HOSES:	3/8" rubber w/ strain guards
	(1) 36" on service side to lead trailer
	(2) (service & emergency) to towed trailer mounted on vertical surface of
	front crossmember below upper flange of drawbars
GLADHANDS:	Phillips Universal Cast #12-41010
	(1) fixed, mounted on drawbar, w/ polyurethane seal - painted red (incoming air)
	(1) on 36" whip hose, w/ polyurethane seal- painted blue (incoming air)
	(1) on 96" hose, w/ polyurethane seal - painted red (to towed trailer)
	(1) on 96" hose, w/ polyurethane seal - painted blue (to towed trailer)
	All gladhand seals to be full face (flapper) with screens

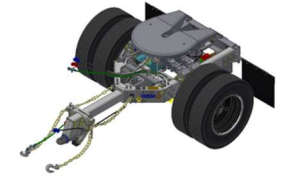




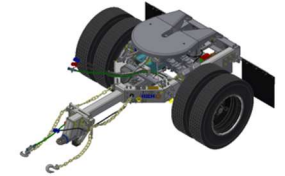
FINISH:	
FRAME:	Hot Dipped Galvanizing per ASTM A 123/A 123M-97a as separate pieces prior to assembly
FRAME HUCK-BOLTS:	Spot paint bolts with Cold Galvanizing spray
AXLE, AIR RESERVOIR, U-BOLTS & FIFTH WHEEL:	Grit blasted, 8 stage zinc phosphate and cleaning E-Coated PPG CF590-534 Black, Epoxy Primer - baked @375 deg. F. Topcoated, HD Acrylic Polyurethane, UPS gray Color to match Sherwin Williams Genesis #G35-32669
LEAF SPRINGS:	Primed & topcoated w/ Acrylic Polyurethane
ALUMINUM, BRASS, NYLON, RUBBER, CHAIN & HOOKS:	Manufacturer's finish
FASTENERS:	Zinc Plated
HYDRAULIC SYSTEM	
PUMP	Hydraulic Gear Pump with integral valving and emergency release
CYLINDER	1-3/4" double acting Cylinder with 28' stroke psi rated
HOSES:	psi rated hydraulic hose
ENCLOSURE:	Steel enclosure with removable lids for servicing. Contains controller, Converter, pump and motor.
HYDRAULIC FLUID:	DEXRON II or higher
LIGHTING / ELECTRICAL :	
INTERVEHICLE CABLES:	(1) Phillips 11 ft. straight cable - 8/10/12 Ga. Wiring
FRONT RECEPTACLES:	(2) Phillips #16-726 plug-in type w/ split pins
HARNESS - MAIN:	Phillips QCS molded assembly with full 8/10/12 cable between receptacles w/ lead to ABS valve , and rear sill. Connectors for Trucklite LED lamps built into harness (no jumpers) with over moulding at each AMP connector
HARNESS - T-DOLLY SYSTEM:	Interlog power and control harness
LIGHTING / ELECTRICAL (cont.):	
T-DOLLY OPERATING SYTEM	T-Dolly ECU with flashable firmware DC - DC Converter/Charger 12 volt 15 Amp-hr Gel Cell Battery 12 volt DC Motor with dual Solenoids, integrally mounted to pump frame Manual Override/Test controls
LAMPS:	(4) Trucklite #44322R red 6 LED, 4" round, stop tail and turn Anti-theft rings
(ICC/ATA REQUIRED LIGHTING)	(1) Trucklite #30257Y incandescent ABS indicator light mounted in roadside drawbar (1) Trucklite#15219 LED License Lamp w/ pigtail & AMP connector w/ #97032 gasket & #15729 bracket
WIRING PLUG ENDS:	AMP at rear for LED lights
WIRING COLOR CODE:	Black -2 tail lights, Brown License plate light, 2 tail lights. Green-right turn Yellow-left tum Red-stop White-ground Blue-auxiliary Constant power ABS function on blue
REFLECTORS:	Mfg. standard as required by law
GROUND:	Stainless steel ground strap between fifth wheel pedestal and rear frame (eye grounded to frame by stainless steel retaining cable) Note: Dielectric lube is to be applied to all connections and to 7-way receptacle. 7-way connectors use dielectric grease, LED lamp pins to be lightly coated

ACCESSORIES:

MUD FLAP:	Anderson aerodynamic 24" x 18" Plain black-no logo
HANGER:	Betts Direct Flex Hanger, 25" long - Galvanized. (Vertical mounting bracket is painted) Bracket huck bolted to bar. Locking nuts and fender washer on forward side of flap.
LOOM	Spiral Wrap on wires and brake tubing
PUSH PULL GUARD	Bolt-on Guard to prevent damage to Push/Pull valve and avoid hose hooking on knob.
DOCUMENT BOX:	AlumiLine Grote pouch mounted in document box Additional, laminated copy of registration inserted in document box body Include original of Federal Annual Inspection form in document box, keep a record copy.
DECALS:	Furnish and install unit and car numbers 1-1/2 high on reflective decal onto each drawbar. Furnish and install TT165 New York Thruway decal Fifth Wheel Operation decal mounted to top of curbside drawbar Gladhand storage decal mounted to top of curbside drawbar Hostling Valve decal mounted on center of valve plate T-Dolly operating and diagnostics decal on bottom of System Enclosure Perform Fed. Annual Inspection (Install document in document box) Install FAI Decal near VIN plate - UPS part number 3416634 - Vomella Graphics Date on FAI decal should be based on a date near time of delivery (Month and Year Only) - do not pre-date - mark month of shipment Furnish and install 5" UPS logo on curbside drawbar Furnish and install PMI date on record box, letters to be 1.50" high PMI date must be based on an 11 month cycle from date of inspection
OTHER:	No manufacturers identification decals or logos Aluminum VIN plate mounted roadside slider housing Additional Vehicle I.D. plate mounted in curbside tailframe Install Mylar tape on backside of license plate - secure with Huck rivets Unit serial number & car number engraved on the curbside drawbar in .50" min. height
NOTE:	FAI decals are to be supplied by Silver Eagle
HOSE & ELEC. TENDER	Silver Eagle #34058 Banana Bar mounted to crossmember
PARTS BOOK	Furnish an electronic parts book for this build. Parts book information will be loaded on a UPS internal web based parts program (FleetCross).



SILVER EAGLE FIFTH WHEEL OPERATING INSTRUCTIONS



Coupling

1. Make sure jaw is locked open and trailer is at proper height.
2. Back dolly slowly under trailer until jaw locks kingpin and handle moves to the center of the dolly.

Uncoupling

1. With vehicle at rest in a relaxed condition and landing gear down, (not being pushed together or pulled apart), pull fifth wheel handle upward and outward to lock the fifth wheel open.
2. Pull dolly slowly out from under the trailer.

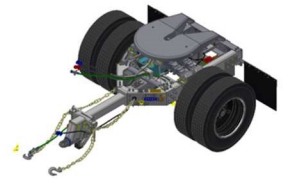
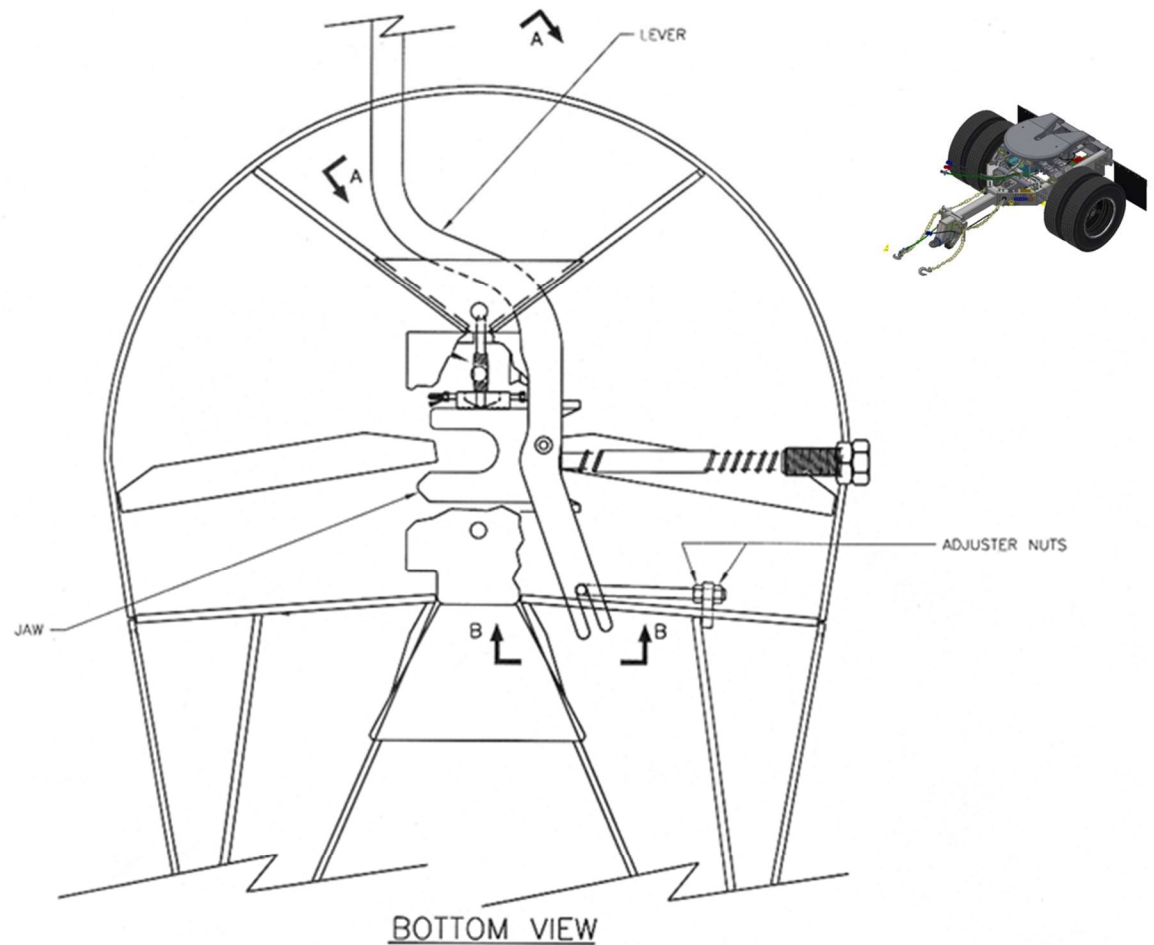
Note

If the handle will not pull outward when the vehicle is in a relaxed condition, use landing gear to raise trailer and unload the dolly fifth wheel.

**Contact Silver Eagle Customer Service
for a video tape on coupling and uncoupling twin/double trailers
SINGLE AXLE CONVERTER DOLLY**

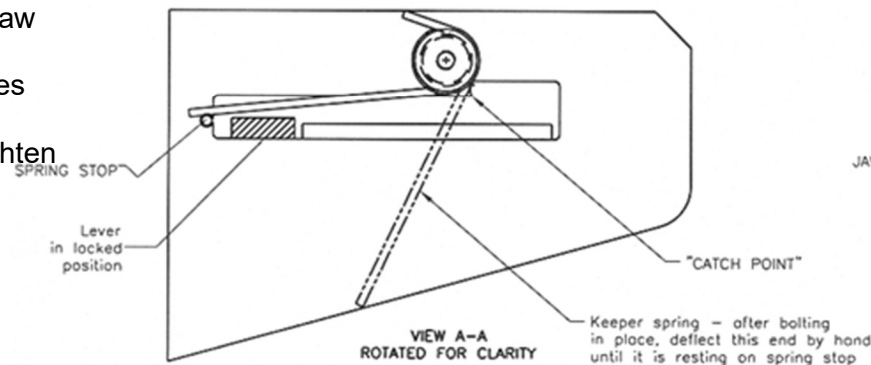
PERFORMANCE TESTING/ADJUSTMENTS

1. Pull the lever into the uncoupling position.
This is where the lever is pulled out and held up by the "Catch Point" indicated in view A-A. If the lever won't stay up, the adjuster nuts on the adjuster at the back end of the lever are probably screwed in too far. Back them off until lever will stay on the catch point.
2. Test the 5th wheel for proper coupling with a test kingpin. Test with the lever in the uncoupling position. If it doesn't release from the "catch point", then the adjuster nuts probably need to be screwed in further.
3. With the jaw closed or in the coupled position, pick the lever up and out of the locked position. Hold the lever just shy of falling back into the locked position. Release the lever to ensure that it passes freely into the locked position.
4. When 5th Wheel functions properly, tighten the lever adjuster locknut securely.



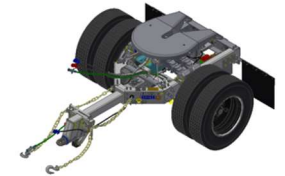
ADJUSTMENT OF LEVER & JAW ASSEMBLY

1. Release Jam Nut (refer to View B-B)
2. Tighten bolt until lever is secure against Jaw assembly.
3. Loosen bolt 1/4 turn or until assembly moves freely.
4. While holding bolt secure from turning, tighten jam nut.

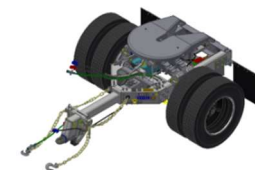


SILVER EAGLE FIFTH WHEEL MAINTENANCE

Jaw Removal (Refer to Diagram D)



1. Make sure the jaw is closed. If not, it can be closed by pushing the trip block (26) forward with a rod or bar. The jaw should be all the way across the center casting (the handle will be in). **Caution: Keep your hands clear of the jaw, it is spring-loaded.**
2. Using a pair of vise grips, clamp the trip lock rod in front of the guide hole on 5th wheel center casting (26) so as to prevent it from moving aft when jaw is removed.
3. When removing the guide bolt (23), applying an anti-seizing compound to the exposed threads often makes the removal process easier.
4. Remove the jaw spring (22) by pulling it through the push rod guide nut.
5. Pull the fifth wheel lever (17) all the way out.
6. Disconnect the fifth wheel lever (17) from the jaw/pushrod assy (25).
7. Remove the jaw/pushrod assy (25) from the 5th wheel table.
8. Lubricate and install the replacement jaw/pushrod assy (25) in the table making sure the pointed tine on the jaw is to aft end of the dolly
9. Slide jaw/pushrod assy in place without spring. Align hole in jaw with mating hole in lever.
10. Apply loctite 242 medium strength thread adhesive or equivalent to cleaned threads of capscrew (16) and jam nut.
11. Thread capscrew (16) into jaw/pushrod assy (25) with two washers (7) between the capscrew head & the lever. Torque the jaw bolt to approximately 70 ft-lbs. The lever should have minimum clearance to allow free rotation against the jaw without binding through its full travel.
12. Tighten the jam nut (1/6-1/4) turn – after contacting the jaw while ensuring the capscrew does not turn.
13. Slide pushrod spring (22) on push rod of the jaw.
14. While holding lever back far enough so the jaw pushrod protrudes into the guide nut, tighten the guide nut (23) securely
15. Remove the vise grips from the trip block rod.
16. Test the table to ensure the jaw opens and closes properly.



Jaw Spring Removal/ Reassembly (item 22)

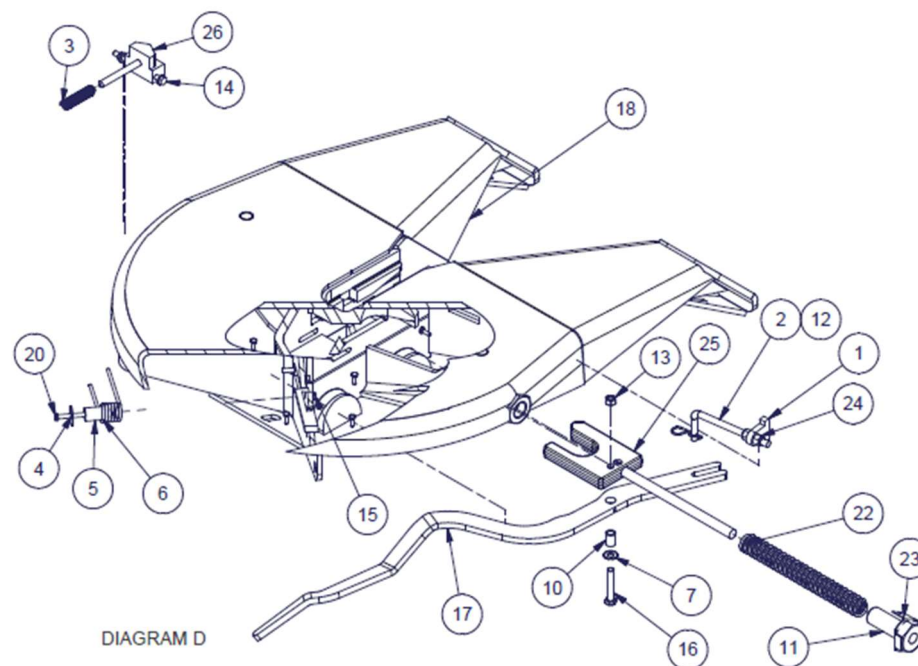
- Complete steps 1 through 4 of Jaw Removal.
- Completes steps 13 through 17.

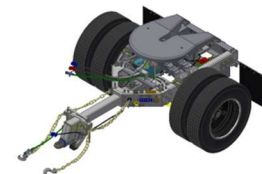
Lever Removal/ Reassembly (item 17)

- Remove lever (17)
- During Reassembly make sure the 2" jam nut is jammed to the 2" standard nut.
- Test the table to ensure the jaw opens and closes properly.

Lever Removal/ Reassembly

- Complete step 1 & 6 of jaw removal
- Install new lever
- Complete steps 10 thru 12 of jaw removal.
- Test the table to ensure the jaw opens and closes properly.

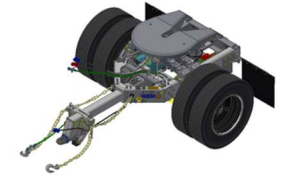




TRIP BLOCK / TRIP BLOCK SPRING REMOVAL / REASSEMBLY

- Complete steps 1 through 5
- Remove the 3/8 bolt, 3/8 lock nut and the two 3/8 washers
- Release the vise grips. **Caution: The trip block is under spring Pressure. Keep hands clear of it when releasing vise grips.**
- Remove the trip block (26) and the trip block spring through the throat of the 5th wheel table. **Caution: The jaw is under spring pressure. Use pliers or another suitable devise to remove old trip block and spring.**
- Install the new trip block and / or trip block spring in the throat of the 5th wheel table. **Caution: The jaw is under spring pressure. Use pliers or another suitable devise to install new trip block and spring.**
- Push the trip block (26) as far forward as possible, with a rod or bar and reinstall vise grips to the trip block rod of item (26) in front of 5th wheel center casting.
- With anti-seize applied to the 3/8 bolt, reinstall the bolt, two washers and lock nut making sure the trip block can freely move fore and aft when pushing on it with a rod or bar (leaving the lock nut 1/6"-3/32" from being fully tightened should work well).
- Release the vise grips. **Caution: The trip block is under spring pressure. Keep hands clear of it when releasing vice grips.**
- Test the table to ensure the jaw opens and closes properly.

DRAWBAR EYE REMOVAL & INSTALLATION INSTRUCTIONS



1. Place dolly under a trailer. Set brakes on trailer and dolly.
2. Remove safety wire if present, on 1283 nut.
3. Remove 1283 nut and 1193 washer or 15315 and 15660
4. Use forklift or eye removal tool (Silver Eagle part no. 15314) to pull against drawbar eye and remove it from the shock housing.
5. Clean any debris from inside of shock absorber bushing and lubricate with rubber lubricant or soapy water
6. Lubricate the shock absorber bushing with rubber lubricant or soapy water and install into the shock housing.
7. Lubricate the shank of the new drawbar eye with rubber lubricant or soapy water and install into the shock housing.

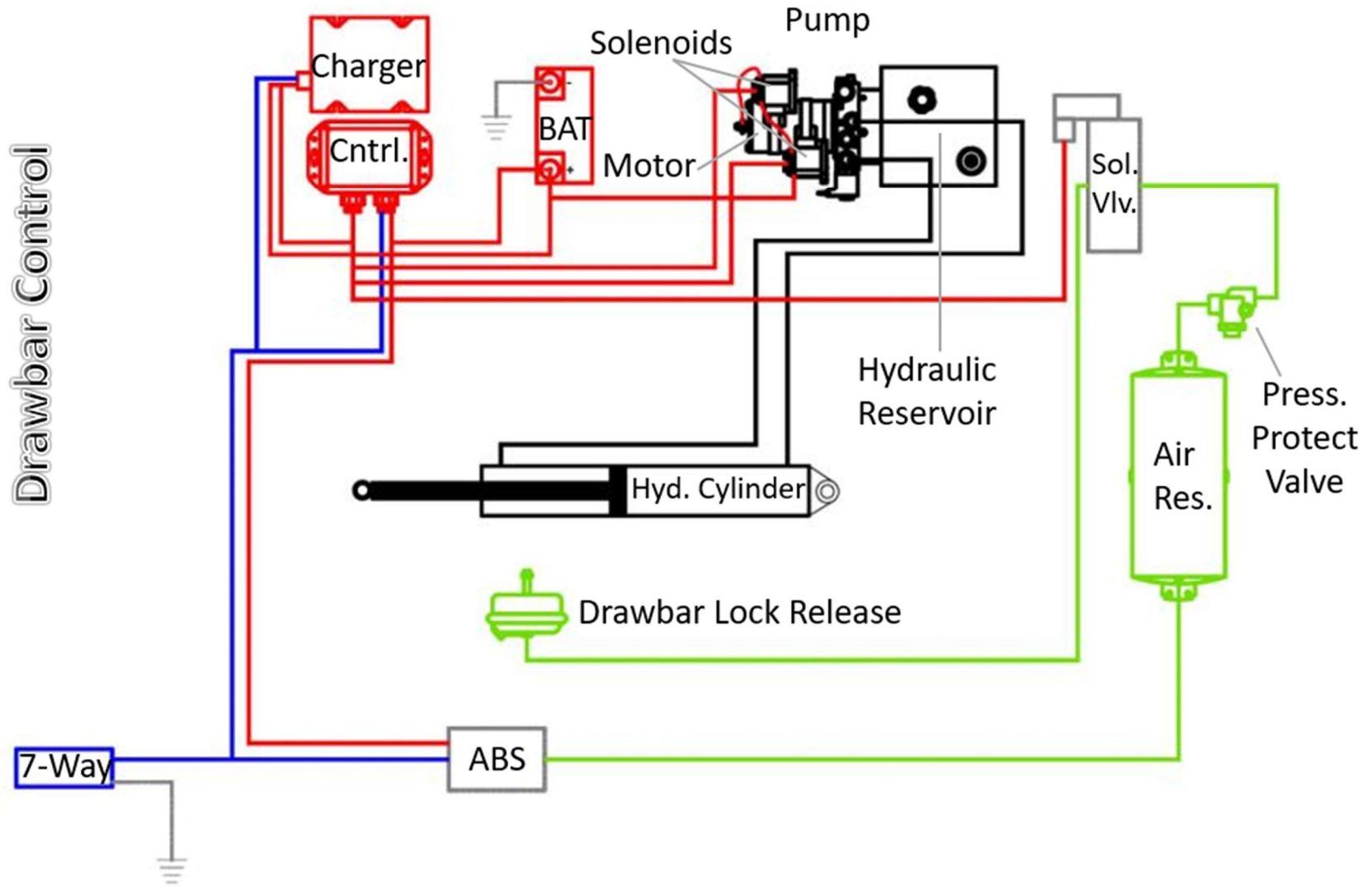
NOTE: The shank of the drawbar eye will only be able to be pushed into the shock absorber bushings a little way by hand. There are three methods of pushing it in the final amount:

- (1) Place the dolly under a trailer or up against a solid wall. Set the brakes on the trailer and dolly. Use a forklift or hostler to push against the drawbar eye until it is seated on the shock absorber bushing.
 - (2) Use a sledge hammer to hammer on the end of the drawbar eye until it is seated in the shock absorber bushing.
 - (3) Use the eye removal tool as #4 above.
8. After the drawbar eye is in place, clean the threads on the shank. **VERY IMPORTANT:** Coat the threads with Never-SeeZ, pipe compound, or some other similar product. to prevent corrosion and keep the nut from seizing.
 9. Install a new washer and thread the nut onto the shank.
 10. Tighten the nut until the rubber shock absorber bushing bulges toward the outer edge of the shock housing at the corners – this is approximately 400-500 ft/lbs of torque.

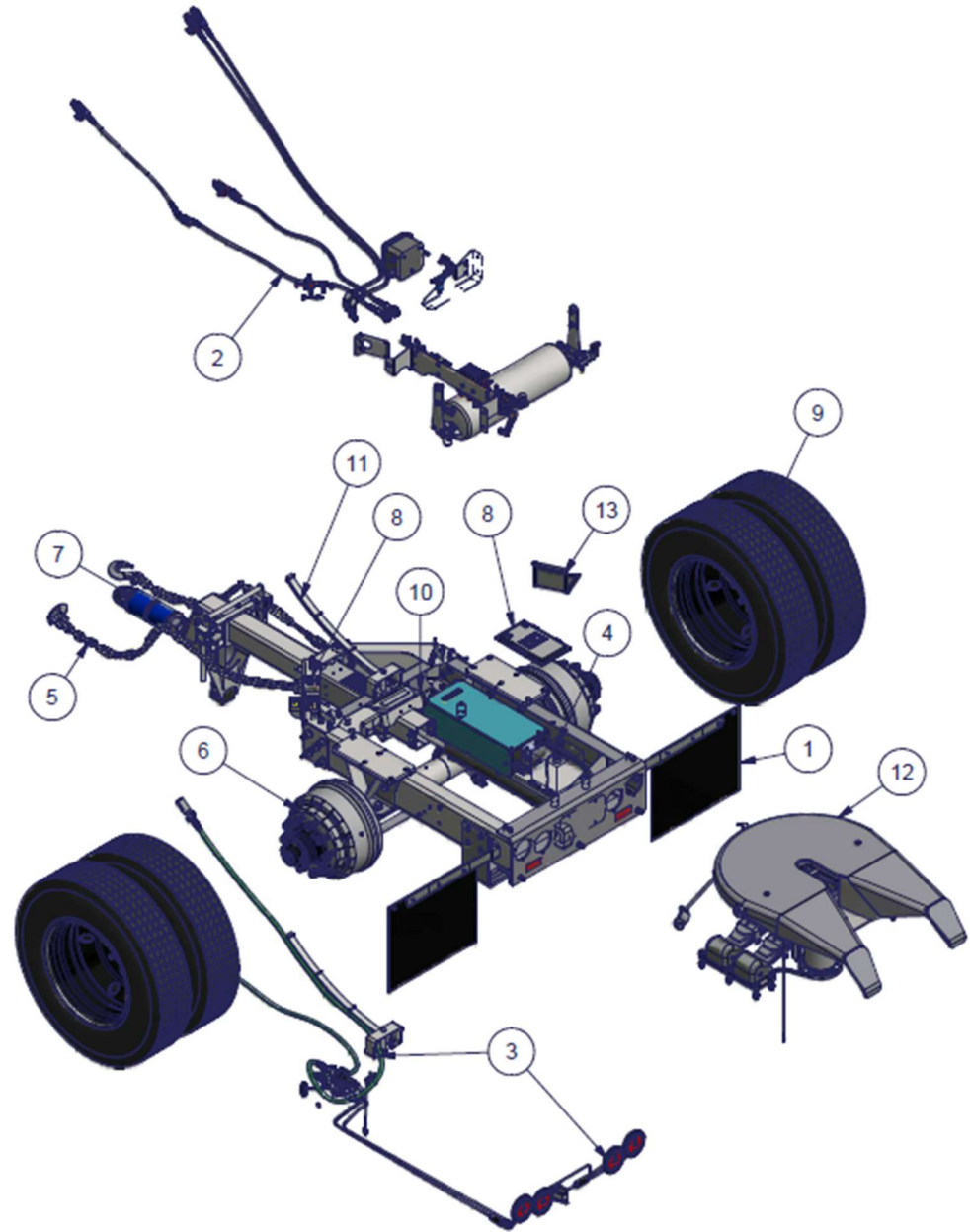
NOTE: Shock absorber bushing may split if tightened excessively.

11. Install the safety/ground wire through one side of the nut and shank. This is accomplished by drilling through one side of the nut and shank providing a hole for the bolt and nut securing the safety wire. This completes the ground circuit and prevents the nut from backing off.
12. Periodically check the tightness of the nut and adjust as necessary. You should not be able to turn the lunette eye by hand at any time.

System Schematic

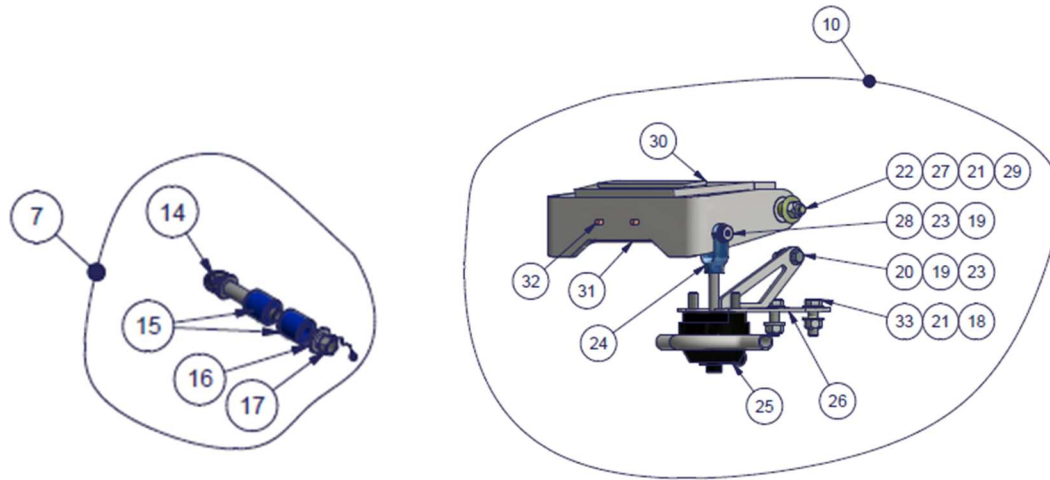


Master Assembly: 30500

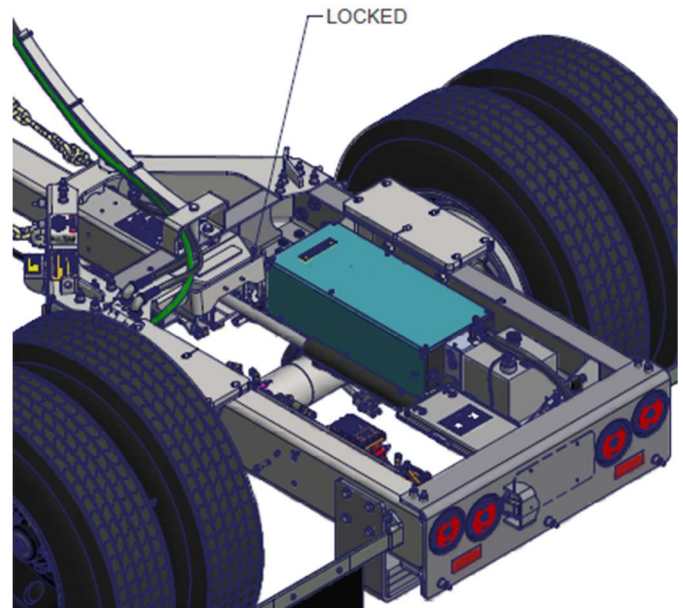
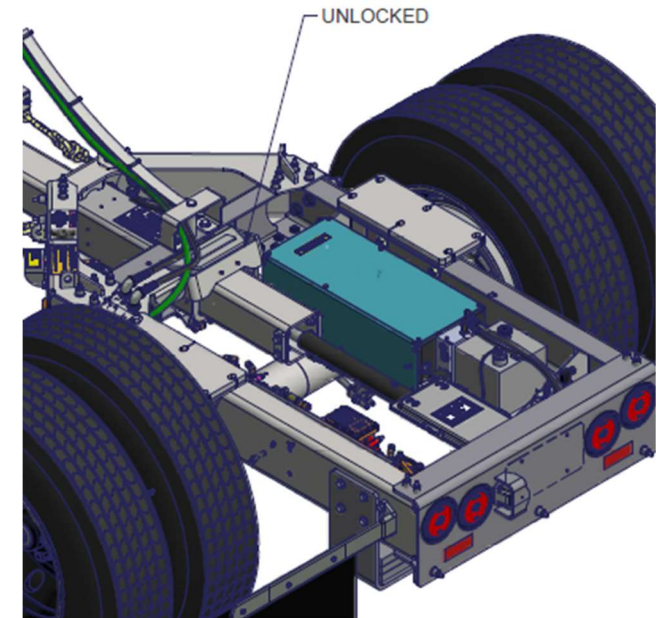


ITEM	QTY	PART	DESCRIPTION
1	1	30568	FRAME ASSY, TST20
2	1	30728	AIR SYSTEM ASSY, TST20
3	1	30729	ELECT SYSTEM ASSY, TST20
4	1	30730	HYD SYSTEM ASSY, TST20
5	2	30746	SAFETY CHAIN ASSY 1/2 RT U-BOLT W/5T CL HOOK
6	1	31049	IN STL, AXLE ASSY, TST20
7	1	31050	IN STL, DRAWBAR, TST20
8	1	31085	IN STL, DECAL/REGISTRATION BOX, TST20, UPS
9	4	32885	TIRE/WHL YOK RY587 295/75R22.5, 39.8 UPS PKG
10	1	33055	IN STL, DWB LOCK SYSTEM, TST20
11	1	34053	IN STL, CABLE TENDER ASSY, UPS, TST20
12	1	34793	IN STL, TABLE INTERLUBE, TST20
13	1	35495	IN STL, EXPD MTL BASKET, TST20

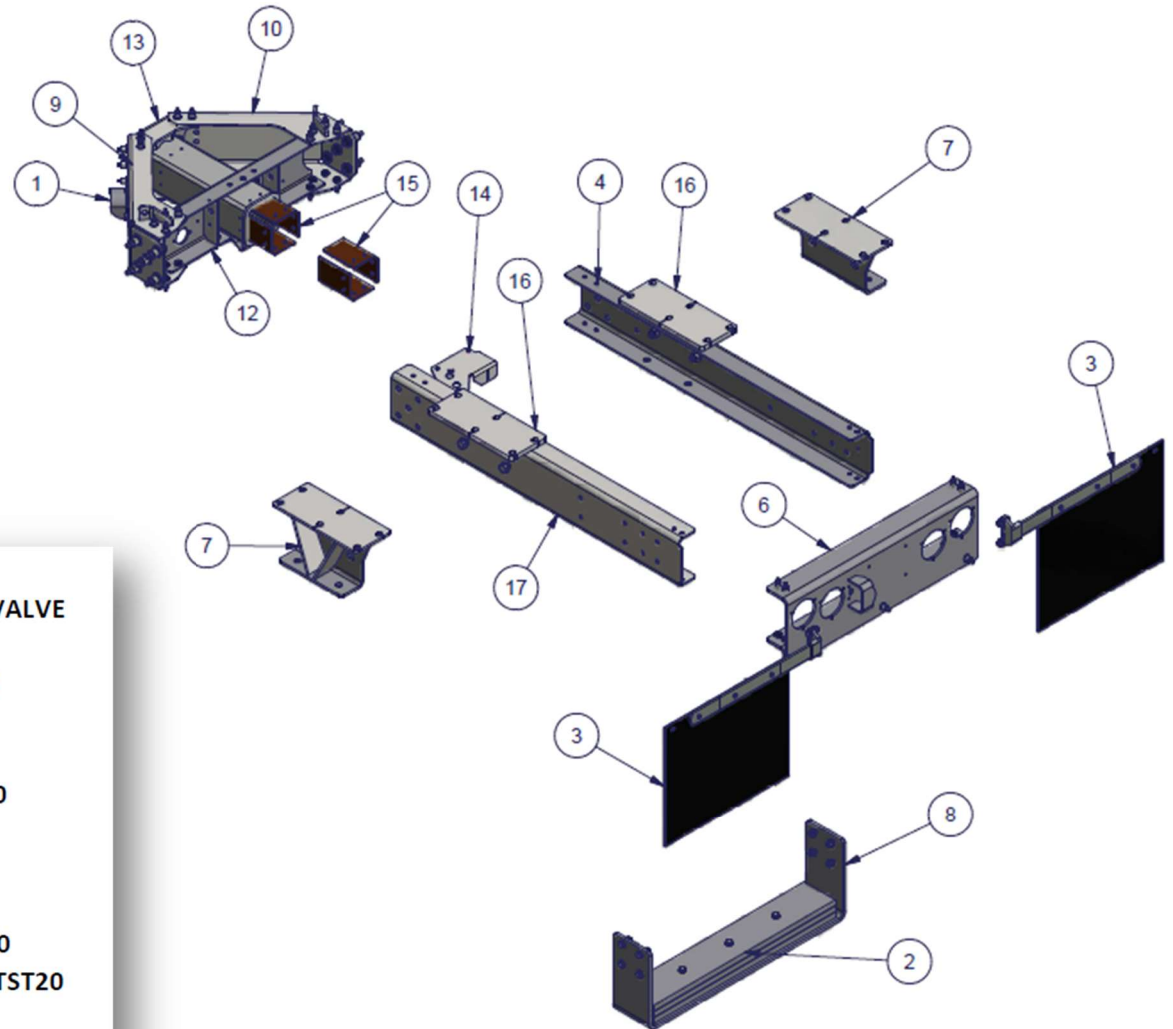
Drawbar Lock Function:



ITEM	QTY	PART	DESCRIPTION
14	1	1171	EYE & SHANK, 3/8, HRDN
15	2	12171	BUSHING, SHOCK ABS ROUND POLYURETHANE
16	1	15315	NUT, SHANK, HEX
17	1	15660	WASHER SHANK DRAWBAR EYE 1/2 HEX NUT
18	4	1150	WASHER, 1/2", FLAT, SAE, PLTD
19	3	1273	WASHER 3/8 SAE PLTD
20	1	19076	CAPSCREW 3/8-16 X 1-1/2 HX GR 8 PLTD
21	4	1942	NUT 1/2-13 METAL LOCK HX GR C PLTD
22	2	21536	CAPSCREW 1/2-13 X 2-1/4 GR 8 ZINC PLTD HX
23	2	2451	NUT 3/8-16 METAL LOCK HX GR C PLTD
24	1	33057	CLEVIS & PIN, 1/2-20, UNIVERSAL
25	1	33058	AIR CHAMBER TYPE 09, 10.4" ROD, HALDEX
26	1	33060	WLDMNT, DWB LOCK AIR CHAMBER MNT, TST20
27	4	3369	WASHER 1/2 FLAT WIDE PLTD
28	1	33690	BOLT, SHOULDER, 1/2 X 1-1/4, ALLOY STEEL
29	2	34339	TUBE, BUSH SLEEVE LOCK HOOP, TST20
30	1	34846	WLDMNT, LOCK HOOP, TST20
31	1	34872	LINER, TEFLON/DELTRIN LOCK HOOP PAD, TST20
32	2	9659	HUCK, MAGNA-LOK, MGL100-R8-12, .415-.725
33	2	9706	CAPSCREW 1/2-13 X 1 1/2 HX GR 8 PLTD



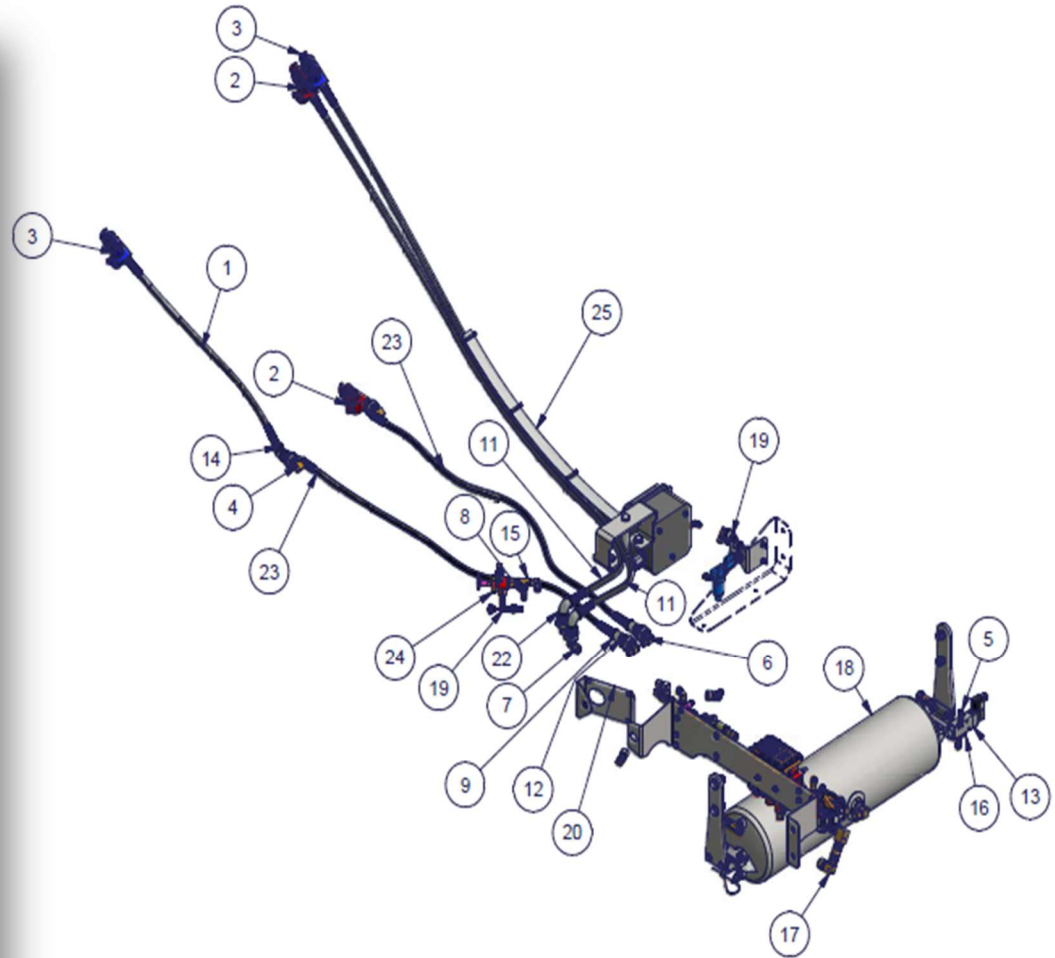
Major Assembly: 30568



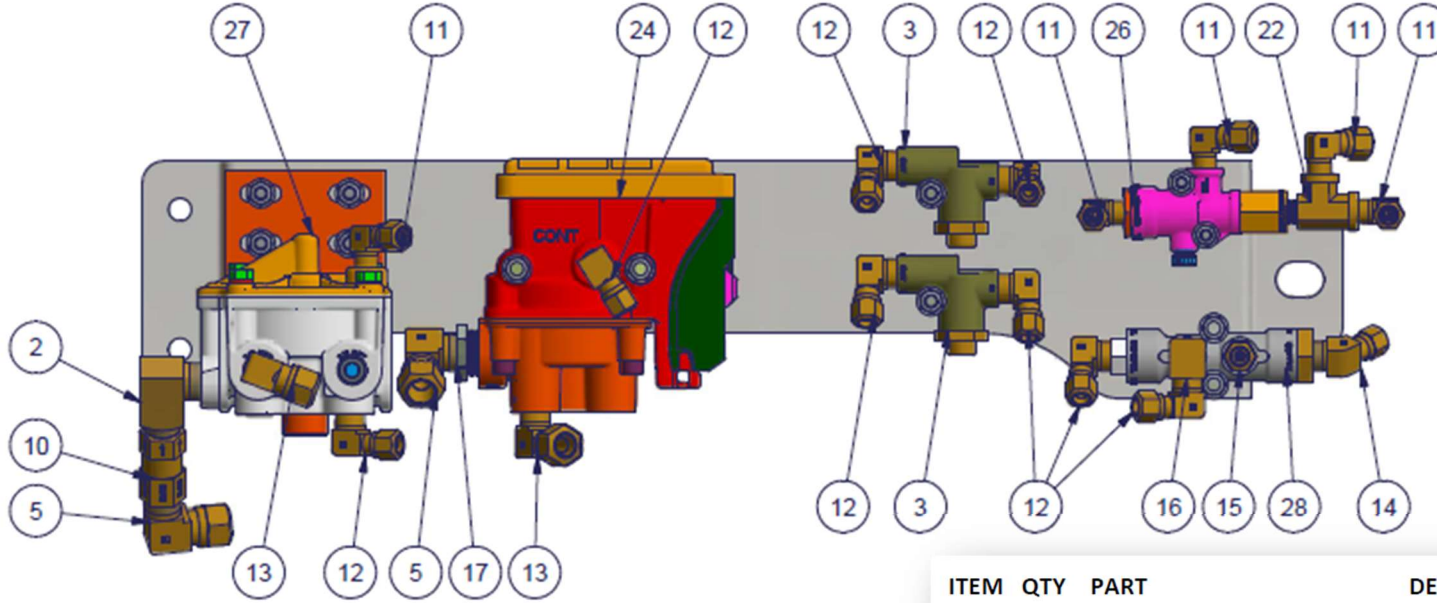
ITEM	QTY	PART	DESCRIPTION
1	1	17779	INSTALLATION, GUARD, PUSH-PULL VALVE
2	1	19164	INSTALLATION, 180# BALLAST, VII,
3	1	25976	INSTALLATION, ECO MUD FLAPS UPS
4	1	30566	PL, SIDE CHANNEL CS, TST20
6	1	30572	WLDMNT, TAIL PLATE, TST20
7	2	30586	WLDMNT, TALL SIDE SUPPORT, TST20
8	1	30965	INSTL, BALLAST HANGER
9	1	32973	WLDMNT, DWB RS, TST20
10	1	32974	WLDMNT, DWB CS, TST20
12	1	34844	WLDMT, FRNT CROSSMEMBER, TST20
13	1	34845	WLDMNT, OUTER SLIDER HOUSING, TST20
14	1	34848	PL, SENSOR MNT, TST20
15	8	34867	LINER, TEFLON/DELFIN, 4X6X.200
16	2	34869	PL, TABLE SPACER, TST20
17	1	34982	WLDMNT, SIDE CHANNEL RS, TST20

Air Assembly: 30728

ITEM	QTY	PART	DESCRIPTION
1	1	11823	HOSE AIR, 3/8x27, RUBBER, 1/2 X 1/2 CONN
2	2	16455	GLADHAND UNIV POLY SEAL W/GUARD/SCREEN P RED
3	2	16456	GLADHAND UNIV POLY SEAL W/GUARD/SCREEN P RED
4	2	1801	ELBOW, ST, 45, 3/8 NPT-M X 3/8 NPT-F, BR
5	5	1804	ELBOW, 90, 3/8T X 1/4 NPT-M, BR
6	3	1805	ELBOW, 90, 3/8T X 3/8 NPT-M, BR
7	3	1806	ELBOW, 90, 1/2T X 3/8 NPT-M, BR
8	1	1816	CONNECTOR, 3/8T X 1/4 NPT-M, BR
9	2	1832	COUPLING, 1/2 NPT-F, TAPERED, MI, GALV
10	2	21179	NUT 8-32 NYL INS HX STNLS
11	2	24983	HOSE AIR, 3/8X86, RUBBER 1/2 X 1/2 CONN
12	6	28083	FITTING, BULKHEAD, 3/8 X 1/2 NPT-M, 1-29/32"
13	1	28209	SLND AIR VLV, 3 WAY, 2 POS, 1/4 NPT, 12V
14	1	2846	ELBOW, 45, 1/2 NPT-F, GALV
15	1	3064	TEE, ST, 1/4 NPT, BR
16	1	32149	BREATHER, 1/4 NPT-M, STL PLTD
17	1	33239	VALVE PLATE ASSY, TST20
18	1	33241	INSTL, AIR TANK, TST20
19	1	34307	INSTAL, AUTO TIRE INFL, DUAL, TN, THA, TST20
20	1	34371	PL, AIR/ELEC ROUT MNT, TST20
21	2	35242	CAPSCREW, 8-32 X 1-3/4 SOCKET HEAD ZINC PLTD
22	2	4495	ELBOW, 90, 1/2 NPT-F, GALV
23	2	5683	HOSE AIR, 3/8x54, RUBBER, 3/8S X 1/2 CONN
24	1	9978	VALVE, PUSH-PULL, BOLT-ON, SEALCO
25	1	34053	INSTL, CABLE TENDER ASSY, UPS, TST20

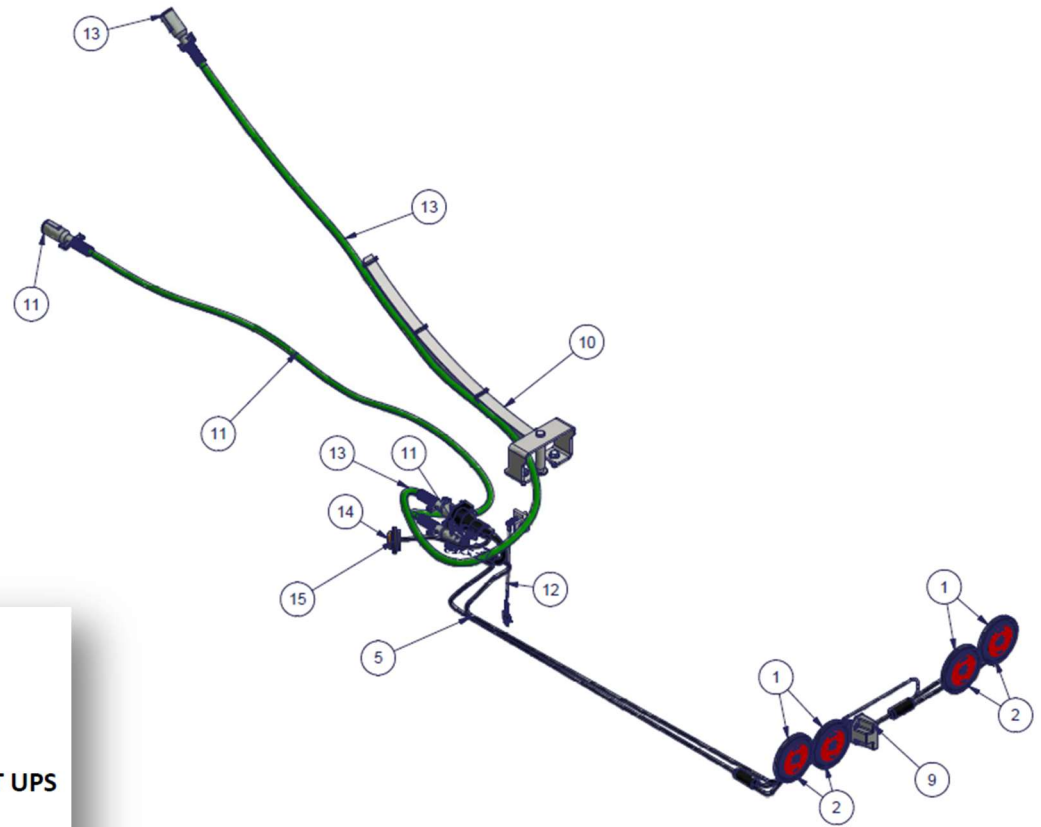


Valve Plate Assembly: 33239



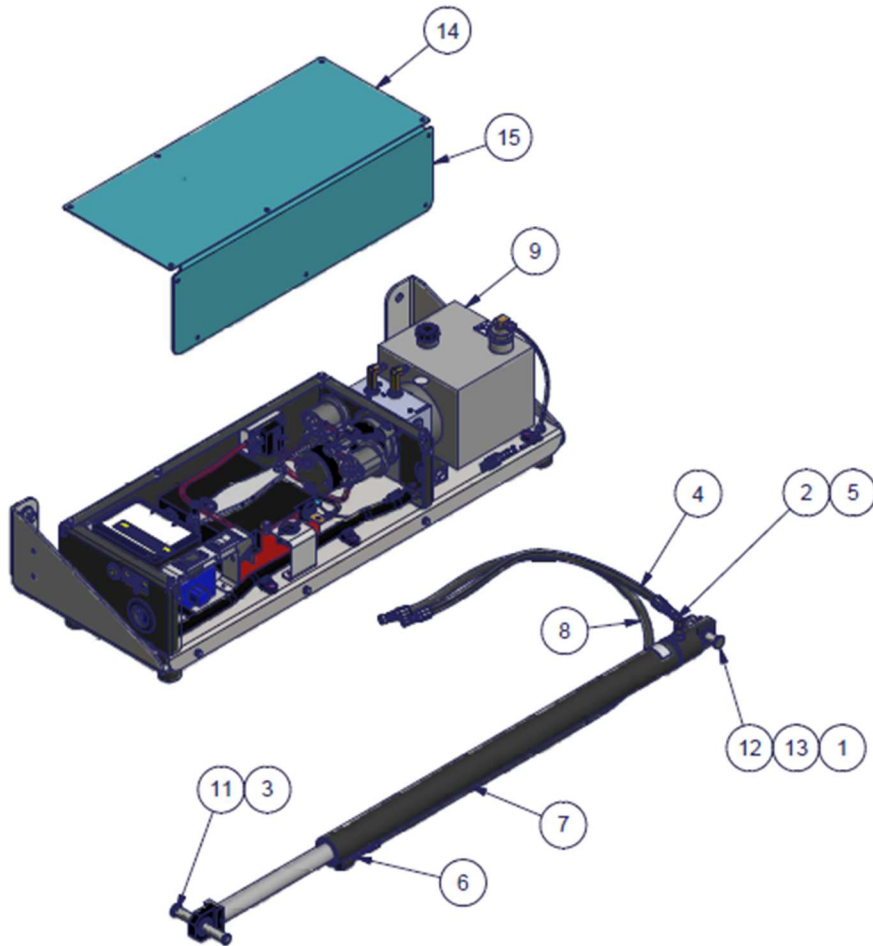
ITEM	QTY	PART	DESCRIPTION
2	1	10685 ELBOW, ST, 90, 1/2 NPT-M X 1/2 NPT-F, BR	
3	2	12582 VALVE, PRESSURE PROTECTION v2 110257, SEALCO	
5	2	13668 ELBOW, 90, 5/8T X 1/2 NPT-M, BR	
10	1	1772 VALVE, CHECK, SC-3, 1/2" NPT, BENDIX	
11	5	1804 ELBOW, 90, 3/8T X 1/4 NPT-M, BR	
12	8	1805 ELBOW, 90, 3/8T X 3/8 NPT-M, BR	
13	3	1806 ELBOW, 90, 1/2T X 3/8 NPT-M, BR	
14	1	1810 ELBOW, 45, 3/8T X 3/8 NPT-M, BR	
15	1	1817 CONNECTOR, 3/8T X 3/8 NPT-M, BR	
16	1	1826 ELBOW, ST, 90, 3/8 NPT-M X 3/8 NPT-F, BR	
17	1	1838 BUSHING, 3/4 NPT-M X 1/2 NPT-F, HX, STL,GALV	
22	1	3064 TEE, ST, 1/4 NPT, BR	
23	1	30948 PL, AIR COMPONENT MNT, TST20	
24	1	32913 VALVE, ABS, BENDIX TABS6 (ECU), PROG, TST20	
26	1	6302 VALVE, SYNCHRO, SV-4, W/BRTHR & CHCK VLV	
27	1	6688 VALVE, RELAY, R-12P WITH BRACKET	
28	1	9858 VALVE, EMERGENCY CONTROL 110376 SEALCO	

Electrical Assembly: 30729



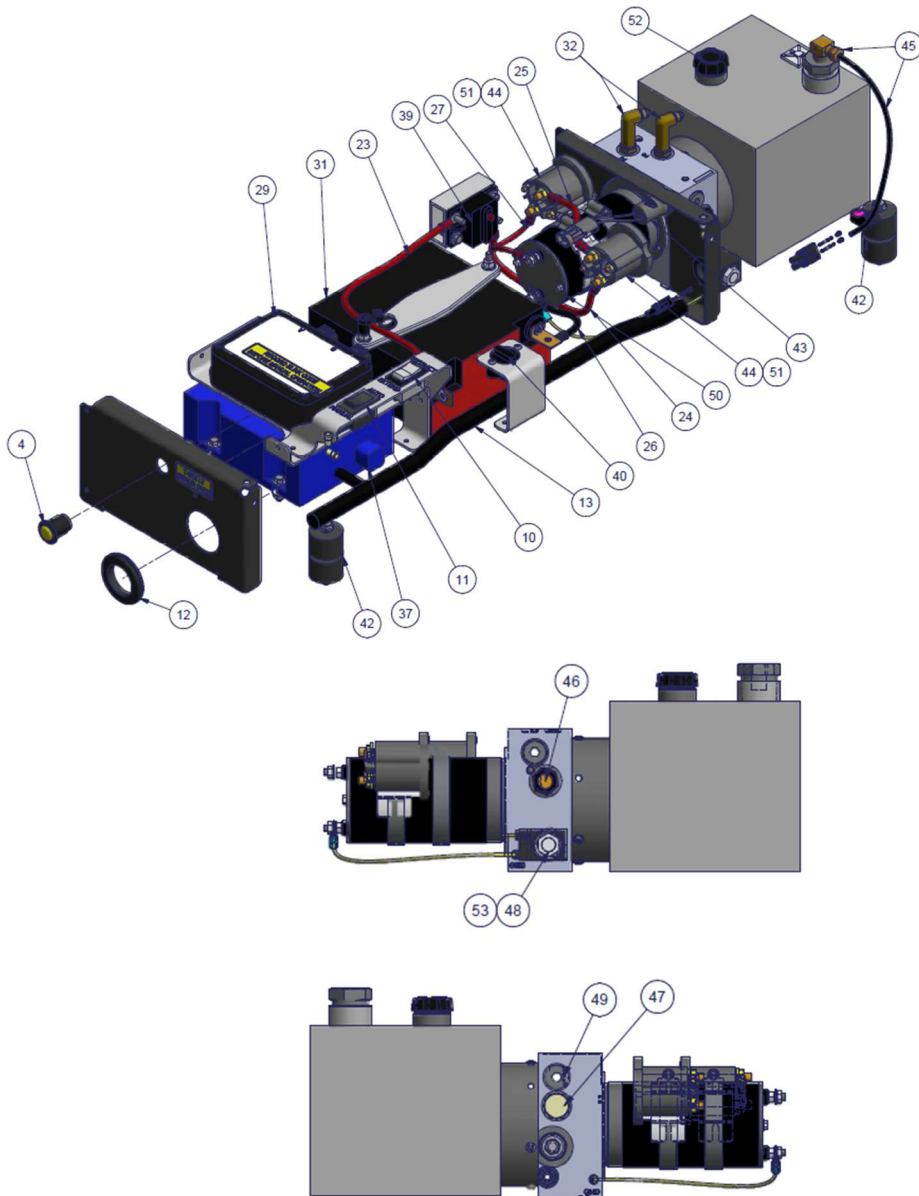
ITEM	QTY	PART	DESCRIPTION
1	4	11239	RETAINING RING, GROTE LED
2	4	13280	LAMP RED 4" RD 6-DIODE LED FLG
5	1	14880	HARNES 2 FLANGED SOCK 4 LT LED LIC LIGHT UPS
9	1	32963	IN STL, LICENSE PLATE LIGHT KIT, LED
10	1	34053	IN STL, CABLE TENDER ASSY, UPS, TST20
11	1	34088	CABLE 7-WAY STR 11' GRN ABS, GROTE
12	1	34344	IN STL, LOCK HOOP SENSOR, TST20
13	1	35020	CABLE 7-WAY STR 9' GRN ABS, GROTE
14	1	9562	LENS, AMBER, TRUCKLITE, ABS
15	1	9563	GROMMET, LAMP, TRUCKLITE, MODEL 30

Hydraulic System Assembly: 30730



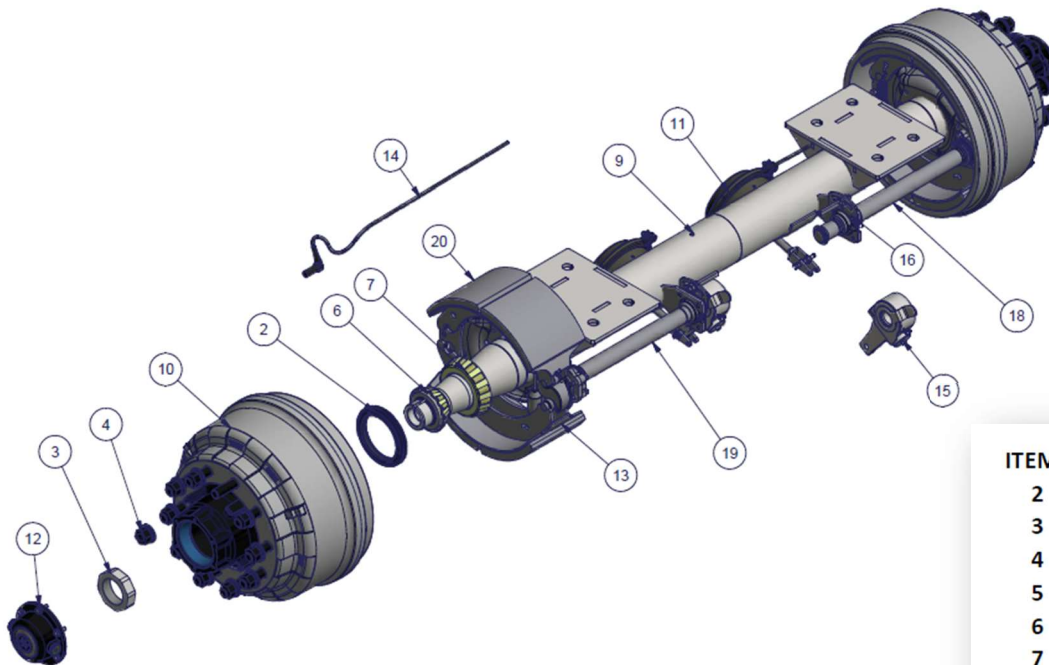
ITEM	QTY	PART	DESCRIPTION
1	1	1172 WASHER 5/8 FLAT F436 HRDN PLTD	
2	1	29415 ELBOW, 90, #4 JIC-M X #4 JIC-F, STL	
3	1	29586 SNAP RING, EXTERNAL, 5/8"	
4	1	29819 HOSE, HYD #4-JIC-F x HOSE-4-24" OAL	
5	1	30414 FITTING, ST, #6 SAE-ORB X #4 JIC-M, STL	
6	1	32864 FITTING, ST, #4 SAE-ORB X #4 JIC-M, STL	
7	1	32955 CYL, HYD, 29"STK 1.63"BORE 1.25"ROD PWRPAC	
8	1	33064 HOSE, HYD #4-JIC-F x HOSE-4-58" OAL	
9	1	33226 INSTL, ELEC/HYD PUMP PACKAGE, TST20	
11	1	34849 PIN, CYL MNT, TST20	
12	1	35235 PIN, REAR CYL MNT, TST20	
13	1	6035 COTTER PIN, 5/32 X 1-1/2, STNLS	
14	1	34917 INSTL, POWER UNIT TOP COVER, TST20	
15	1	34918 INSTL, POWER UNIT SIDE COVER, TST20	

Elec/Hyd Pump Package: 33226



ITEM	QTY	PART	DESCRIPTION
4	1	17747	LAMP, MARKER, MODEL 33 LED, YELLOW W/GROMMET
10	1	28205	ROCKER SWITCH, HD, DPDT, 3POS, 2 CRT, MNTRY
11	1	28206	ROCKER SWITCH, HI AMP, SPDT, 2POS, BLACK
12	1	29130	GROMMET, 1-1/2 X 3/32 X 2 X 2-3/8 X 3/8
13	1	33234	WIRE HARNESS, ELEC/HYD POWER UNIT, TST20
23	1	34096	WIRE, 6GA RED, 1/4" X 1/4" RING TERM, 14" LONG
24	1	34097	WIRE, 6GA RED, 1/4" X 5/16" RING TERM, 10" LONG
25	1	34098	WIRE, 6GA RED, 5/16" X 5/16" RING TERM, 7" LNG
26	1	34099	WIRE, 6GA BLK, 1/4" X 5/16" RING TERM, 7" LONG
27	1	34120	WIRE, CALIBRATED W/LEADS, TST20
29	1	34250	CONTROLLER, TST20, PROGRAMMED
31	1	34641	BATTERY, AGM, DEEP CYCLE, 15AH
32	2	34693	ELBOW, 90, #6 SAE-ORB X #4 JIC-M, X-LNG, STL
37	1	34919	INSTL, DC-DC CONVERTER / CHARGER, TST20
38	1	34920	INSTL, POWER UNIT PUMP, TST20
39	1	34921	INSTL, CIRCUIT BREAKER 150A
40	1	34922	INSTL, CIRCUIT BREAKER 30A
42	4	35682	INSTL, ISOLATOR KIT, TST20
43	1	33679	SENSOR, PRESSURE SWITCH, NO, 2800PSI
44	2	34048	CONTACTOR, TROMBETTA, 150AMP DC
45	1	34644	INSTL, OIL FLOAT SWITCH, TST20
46	1	34645	VALVE, DBL PILT CHCK, CARTRIDGE, TST20
47	1	34646	VALVE, RELIEF "P3", TST20
48	1	34647	VALVE, POSITION CART, 4-2/2-P
49	1	34649	VALVE, CROSS-OVER RELIEF, TST20
50	1	34650	MOTOR, DC, 12V, 3", 2 TERM, SLOW SP, TST20
51	2	34651	CLAMP, HOSE, WORM GR, 2.3-3.25 ID
52	1	34652	CAP, RESERV, BREATHER-FILLER, TST20
53	1	35790	COIL, POSITION VALVE, TST20

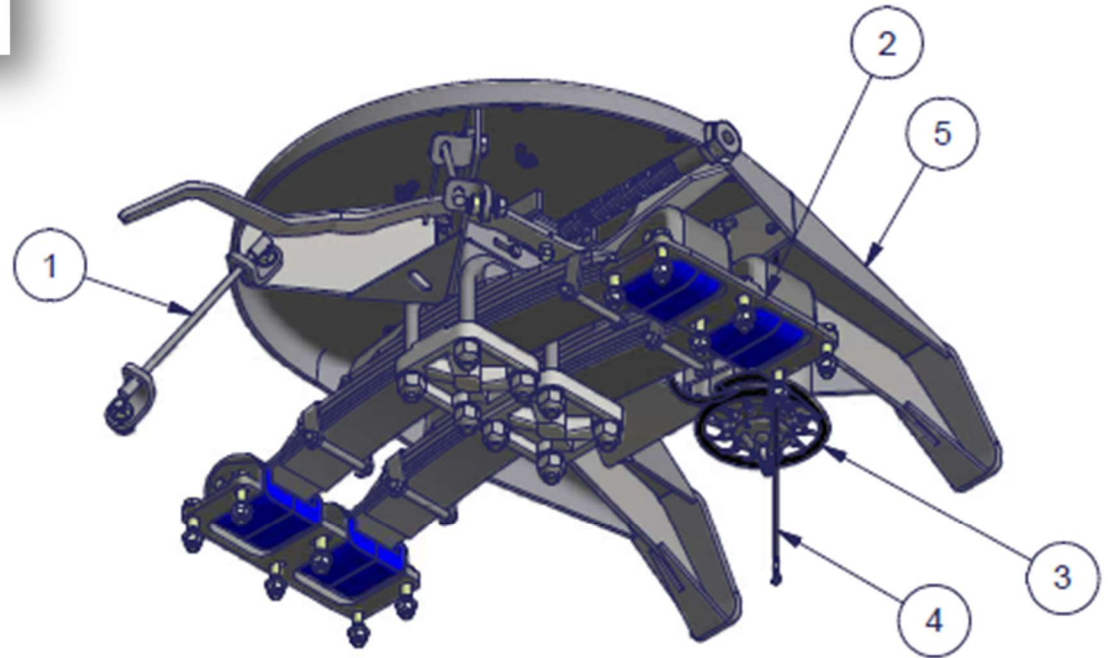
Axle Assembly: 30745



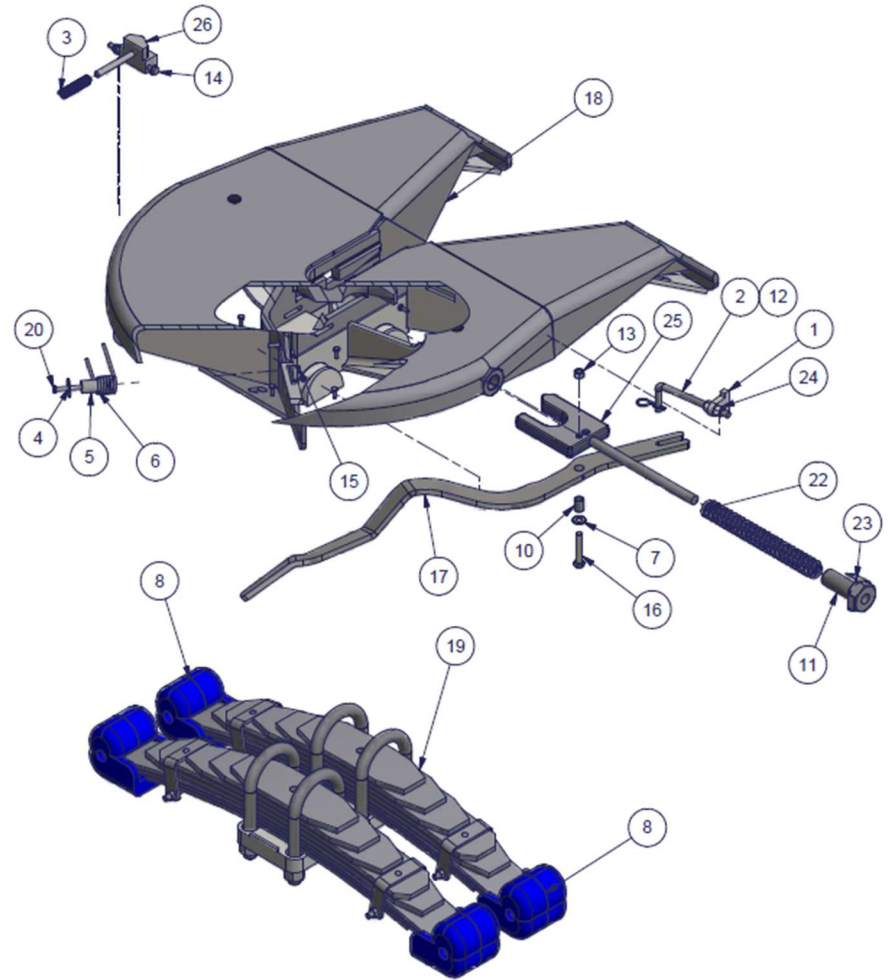
ITEM	QTY	PART	DESCRIPTION
2	2	12567	SEAL, OIL, NATIONAL 5-STAR GOLD, TN
3	2	12861	NUT SPINDLE TN PRO TORQ AXLE STEMCO 447-4743
4	20	13778	NUT, WHEEL STUDS, M22 X 1.5, 33MM HEX, 1.22 HT
5	10	16597	GREASE, PENNLITH EP-2, RED LITHIUM
6	2	1992	BEARING AXLE, OUTER; TAPERED-ROLLER, (GEN BRG)
7	2	1993	BEARING AXLE, INNER; TAPERED-ROLLER, (GEN BRG)
9	1	30744	AXLE BEAM 71.5N, BARE, W/3" SEATS, PSI ECOAT
10	2	32881	HUB & DRUM, CAST N-10, STL WHL, ABS 16.5 X 7
11	2	32882	AIR CHAMBER TYPE 30 LNG STRK W/WLD CLEVIS
12	2	34082	HUB CAP, SKF TF5, 5.5" B.C., PSI, W/GSKT/BLTS
13	1	34107	AXLE COMPONENT KIT MERITOR STN-JT Q+ W/O ENCL
14	1	35131	INSTAL WHEEL SENSORS, TABS6, 90 DEG, 75"
15	2	4798	SLACK ADJ AUTO, 6", 28 SPLN, HALDEX, 1 PC
16	2	4799	BRACKET KIT, HALDEX SLACK ADJ, 1 BRKT/PIN/NUT
17	30	6281	LUBE, GEAR, SYNTHETIC, 75W90
18	1	2210S8391	CAMSHAFT, FIN. RH
19	1	2210S8392	CAMSHAFT, FIN. LH
20	1	KIT 8091	CAMSHAFT BUSHING KIT

Fifth Wheel Assembly: 34793

ITEM	QTY	PART	DESCRIPTION
1	1	22229	INSTALLATION, LIMIT CABLES, 14", VAIL
2	2	30552	INSTR, ONE DBL BOOT HSG, BOLTED, GALV
3	1	34306	INSTALLATION, INTERLUBE 5TH WHL MNT, TST20
4	1	34789	INSTR, GRND STRAP VA
5	1	34812	5TH WHL TBL SHRT HNDL POLY, LUBE, T-DOLLY



Fifth Wheel Kit: 34812



ITEM	QTY	PART	DESCRIPTION
1	1	10076	ANCHOR, LEVER ADJUSTMENT, 5TH WHL, FRONT PULL
2	1	10077	ADJUSTER, LEVER, 5TH WHL, FRONT PULL DRILLED
3	1	1123	SPRING, TRIP BLOCK, SERIES 10-60
4	2	11259	WASHER 3/8 X 1-1/2 MIN OD FENDER THICK PLTD
5	1	11260	POST,KEEPER SPRING,LEVER,5TH WHL,FRONT PULL
6	1	11419	SPRING KEEPER,LEVER,5TH WHL,FRT PULL,RS,ECOAT
7	1	1150	WASHER, 1/2", FLAT, SAE, PLTD
8	4	12172	SPRING BOOT POLYURETHANE PAIR
10	1	13381	BUSHING, 1/2 I.D. X 3/4 O.D. X 1
11	1	1342	GUIDE, PUSHROD, SEMCO TABLE, 40-60
12	1	15801	HAIRPIN COTTER, 1/2-5/8 DIA, .120", PLTD
13	1	1942	NUT 1/2-13 METAL LOCK HX GR C PLTD
14	1	1965	CAPSCREW 3/8-16 X 5 HX GR 5 PLTD
15	2	2451	NUT 3/8-16 METAL LOCK HX GR C PLTD
16	1	27494	CAPSCREW 1/2-13 X 2-3/4 HX GR 8 PLTD FULL THD
17	1	34086	LEVER, 5TH WHL, FNT PULL, RS, SHR HNDL, LUBE
18	1	34813	5TH WHL WLDMT, EXT RAMP, LUBE T-DOLLY
19	1	34822	INSTAL, 7 LEAF SPRINGS
20	1	4107	CAPSCREW 3/8-16 X 3-1/4 HX GR 5 PLTD
22	1	8369	SPRING, JAW, SERIES 10-60
23	1	8535	WASHER LOCK TAB 16 GA
24	2	8820	NUT 1/2-13 TOP LOCK JAM HX GR C PLTD
25	1	8944	JAW ASSY, HUCKED PUSHROD, LH
26	1	9640	TRIP BLOCK WELDMENT, LH, SERIES 30-60