



SILVER EAGLE

MANUFACTURING COMPANY

FEDEX FREIGHT EAST

OPERATION PROCEDURES MAINTENANCE INSTRUCTIONS PARTS LIST



Model: VAST20W

Unit Number: D3833 – D3932

VIN: 889 - 938 and 953 - 1002

Part Number: 13091

Silver Eagle Fifth Wheel OPERATING INSTRUCTIONS

Coupling

1. Make sure jaw is locked open and trailer is at proper height.
2. Back dolly slowly under trailer until jaw locks kingpin and handle moves into the fifth wheel.

Uncoupling

1. With vehicle at rest in a relaxed condition and landing gear down, (not being pushed together or pulled apart), pull fifth wheel handle outward and upward to lock the fifth wheel open.
2. Pull dolly slowly out from under the trailer.

Note

If the handle will not pull outward when the vehicle is in a relaxed condition, use landing gear to raise trailer and unload the dolly fifth wheel.

Contact Silver Eagle Customer Service for video tape on coupling and uncoupling twin/double trailers.

Single Axle Converter Dolly REQUIRED MAINTENANCE

*Refer to illustration, following, for part descriptions.
Refer to Parts Catalog for part numbers.*

First 50 - 100 Miles	Consult wheel maintenance instructions. Check wheel nut torque. <i>Recheck at every dismount.</i>
Every 1,000 Miles	Check axle maintenance instructions. Check axle for oil levels and leaks.
First 5,000 miles or 30 days	<ol style="list-style-type: none">1) Tighten the fifth wheel/leaf spring U-bolts to 375 lbs/ft torque. Tighten the axle seat bolts to 420 lbs./ft. torque.2) Inspect springs for broken leaves and missing or broken spring keepers or keeper bolts.3) Inspect drawbar eye assembly and tighten shank nut (Item 14) as required. NOTE: Tighten shank nut until shock absorber bushings bulge almost to outer edge of shock housing. Be sure to reconnect the shank nut safety wire after tightening shank nut.4) Tighten all other fasteners as required. Replace any worn, stripped or missing fasteners with appropriate grade and strength.5) Inspect all air lines and electrical cables for chafing, kinking, leakage or damage.6) Inspect fifth wheel table assembly for bent, worn, cracked or excessively loose parts. Replace any cracked parts and worn or missing fasteners, readjust or tighten fasteners as necessary.

Fifth Wheel Handle Adjustment

Figure 1

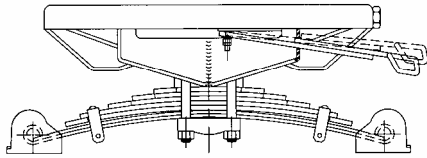


Figure 1

If the handle remains in the upright position after uncoupling, (shown as upper handle in figure), the nuts are adjusted too tightly. Upon uncoupling, trailers, the handle should fall freely to the bottom of the slot (shown as lower handle in figure), allowing the handle to move inward

Figure 2

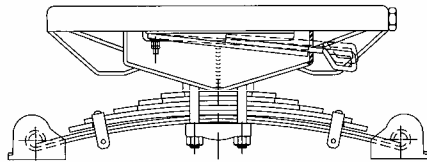


Figure 2

If the handle rests on the top of the slot when fully coupled (shown as upper handle in figure), then the nuts are too tight. When fully coupled, the handle should rest at the bottom of the slot (shown as lower handle in figure).

Note: It is necessary to use two wrenches to loosen/secure the standard and jam nuts. Proper adjustment of the nuts will be achieved by following these guidelines:

- 1) The standard nut should be fully tightened onto the handle's capscrew.
- 2) Tighten the jam nut until it bottoms out on the end of the capscrew.
- 3) Complete tightening by locking the standard nut against the jam nut.

Recheck handle movement for proper adjustment.

Silver Eagle Fifth Wheel Maintenance

Silver Eagle Fifth Wheel Maintenance Jaw Removal (Item 12)

1. Make sure the jaw is closed. If not, it can be closed by pushing the trip block (9) forward with a rod or bar. The jaw should be all the way across the center casting (the handle will be in). **Caution: Keep your hands clear of the jaw, it is spring-loaded.**
2. Using a pair of vise grips, clamp the trip lock rod in front of the guide hole on 5th wheel center casting (9) so as to prevent it from moving aft when jaw is removed.
3. When removing the guide bolt (19), applying an anti-seizing compound to the exposed threads often makes the removal process easier.
4. Remove the jaw spring (16) by pulling it through the push rod guide nut.
5. Pull the fifth wheel handle (18) all the way out such that the jaw (12) is fully retracted.
6. Disconnect the fifth wheel handle (18) from the lever (13) and the lever from the jaw/pushrod assy (9).
7. Remove the jaw/pushrod assy (12) from the 5th wheel table.
8. Lubricate and install the replacement jaw/pushrod assy (12) in the table making sure the pointed tine on the jaw is to aft end of the dolly
9. Slide jaw/pushrod assy in place without spring. Align hole in jaw with mating hole in lever.
10. Apply loctite 242 medium strength thread adhesive or equivalent to cleaned threads of capscrew (17) and jam nut (11).
11. Thread capscrew (17) into jaw/pushrod assy (12) with two washers (14) between the capscrew head & the lever. Torque the jaw bolt to approximately 70 ft-lbs. The lever should have minimum clearance to allow free rotation against the jaw without binding through its full travel.
12. Tighten the jam nut (11) 1/6-1/4 turn – after contacting the jaw while ensuring the capscrew does not turn.
13. Slide pushrod spring (16) on push rod of the jaw
14. While holding lever back far enough so the jaw pushrod protrudes into the guide nut, tighten the guide nut (19) securely
15. Remove the vise grips from the trip block rod (9)
16. Test the table to ensure the jaw opens and closes properly, per drawing 86-033 A Fifth Wheel Handle Adjustment.

Jaw Spring Removal/ Reassembly (item 16)

- Complete steps 1 through 4 of Jaw Removal.
- Completes steps 13 through 17.

Pull Handle Removal/ Reassembly (item 18)

- Remove pull handle (18)
- During Reassembly make sure the 2" jam nut (11) is jammed to the 2" standard nut (15) .
- Test the table to ensure the jaw opens and closes properly.

Lever Removal/ Reassembly (item 13)

- Complete step 1 & 6 of jaw removal
- Install new lever (13)
- Complete steps 10 thru 12 of jaw removal.
- Test the table to ensure the jaw opens and closes properly per drawing 86-033 Rev B Fifth Wheel Handle Adjustment.

Trip block/ Trip block Spring Removal/ Reassembly

- Complete steps 1 through 5
- Remove the 3/8 bolt, 3/8 lock nut and the two 3/8 washers
- Release the vise grips. **Caution: The trip block is under spring pressure Keep hands clear of it when releasing vise grips.**
- Remove the trip block (9) and the trip block spring (28) through the throat of the 5th wheel table. **Caution: The jaw is under spring pressure. Use pliers or another suitable device to remove old trip block and spring.**
- Install the new trip block and / or trip block spring in the throat of the 5th wheel table. **Caution: The jaw is under spring pressure. Use pliers or another suitable device to install new trip block and spring.**
- Push the trip block (9) as far forward as possible, with a rod or bar and reinstall vise grips to the trip block rod of item (9) in front of 5th wheel center casting.
- With anti-seize applied to the 3/8 bolt, reinstall the bolt, two washers and lock nut making sure the trip block can freely move fore and aft when pushing on it with a rod or bar (leaving the lock nut 1/6"-3/32" from being fully tightened should work well).
- Release the vise grips. **Caution: The trip block is under spring pressure. Keep hands clear of it when releasing vice grips.**
- Test the table to ensure the jaw opens and closes properly.

DRAWBAR EYE REMOVAL & INSTALLATION INSTRUCTIONS

1. Place dolly under a trailer. Set brakes on trailer and dolly.
2. Remove safety wire on 1283 nut.
3. Remove 1283 nut and 1193 washer.
4. Use forklift to hostler to pull against drawbar eye to remove it from the shock housing.
5. Clean any debris from inside of shock absorber bushing and lubricate.
6. Lubricate the shock absorber bushing with rubber lubricant or soapy water and install into the shock housing.
7. Lubricate the shank of the new drawbar eye with rubber lubricant or soapy water and install into the shock housing.

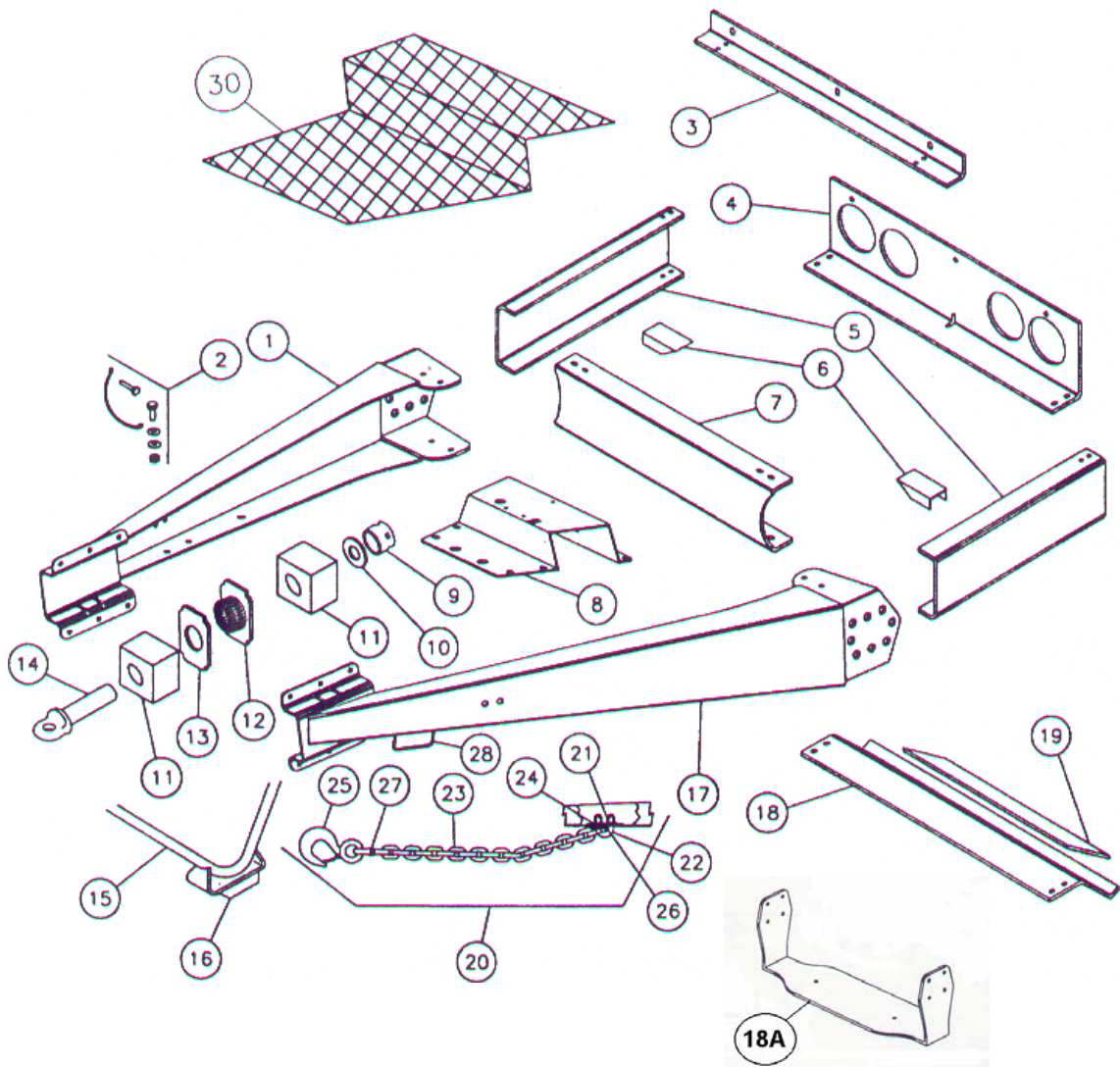
NOTE: The shank of the drawbar eye will only be able to be pushed into the shock absorber bushings a little way by hand. There are two methods of pushing it in the final amount:

- (1) Place the dolly under a trailer or up against a solid wall. Set the brakes on the trailer and dolly. Use a forklift or hostler to push against the drawbar eye until it is seated on the shock absorber bushing.
- (2) Use a sledge hammer to hammer on the end of the drawbar eye until it is seated in the shock absorber bushing.

8. After the drawbar eye is in place, clean the threads on the shank. Coat the threads with Never-SeeZ, pipe compound, or some other similar product.
9. Install the washer and thread the nut onto the shank.
10. Tighten the nut until the rubber shock absorber bushing bulge's toward the outer edge of the shock housing.

NOTE: Shock absorber bushing may split if excessive tightening exists. By looking inside the threaded end of the shank, there should be two or three threads visible on the nut.

11. Install a safety wire on the nut to prevent it from backing off.
12. Periodically check on the tightness of the nut and adjust as necessary.



Frame Assembly

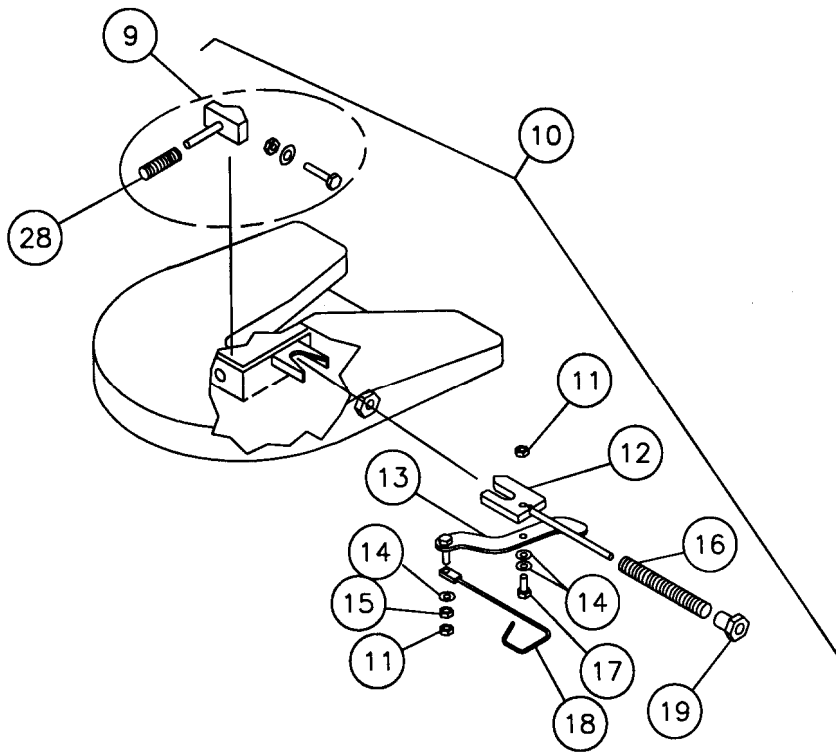
Item	Part Nbr	Description
1	13935	DRAWBAR KIT, CURBSIDE HUCK BOLTED
2	11309	SAFETY WIRE ASSY
3	11092	ADAPTER, TAILPLATE, SPIN-AROUND TILTSTOP
4	11198	TAILPLATE WELDMENT, WELD-STUD, SPIN-AROUND TILTSTOP
5	13704	SIDE CHANNEL, 74" VA W/ BALLAST HOLES
6	9436	TANK BRACKET
7	11374	CROSSMEMBER, VA DOLLY
8	11516	VALVE PLATE/ FASTENERS, STANDARD
9	15315	NUT, SHANK
10	15560	WASHER, SHANK
11	9520	BUSHING, SHOCK ABSORBER, RUBBER, VA, (2 PAIR REQ'D)
11	12170	BUSHING, SHOCK ABSORBER, URETHANE, VA (2 PAIR REQ'D)
12	9714	DIVIDER WELDMENT, SHOCK HOUSING
13	9440	DIVIDER, SHOCK HOUSING

Item	Part Nbr	Description
14	1171	EYE & SHANK, 1/4" SHANK, HRDN EYE
15	11011	SUPPORT LEG WELDMENT WITH FOOT
16	8808	RUBBER PAD, BOLT-ON, SUPPORT LEG
17	13936	DRAWBAR KIT, ROADSIDE HUCK BOLTED
18	11090	TILTSTOP, SPIN-AROUND
18A	13456	BALLAST HANGER W/FASTENERS
19	11151	BALLAST KIT, 20#
20	12710	SAFETY CHAIN ASSY, 1/2", RT U-BOLT, W/HOOK
21	1164	NUT, 5/8-11 UNC, METAL LOCK, HX, GR C, PLTD
22	7317	U-BOLT, KIT, RT, ZINC CHROMATE, SAFETY CHAIN
23	12570	CHAIN, 1/2", ZINC CHROMATE
NS	7655	U-BOLT KIT, RT, SAFETY CHAIN
24	1172	WASHER, 5/8, FLAT, F436, HRND, PLTD
25	12021	HOOK, 5-TON, W/SAFETY LATCH
26	7318	PAINT PROTECTOR, SAFETY CHAIN
27	1183	LINK, LOCKING, 1/2, GR 8
28	5882	HANDLE ASSY, HINGED, UNDER DWB
30	10732	DRAWBAR BASKET/ FASTENERS
NC	11711	FLAP HANGER SET, BETTS B67NT
NC	7716	FLAP, 24 X 27 45 DEG, LH ANTI-SAIL BLK
NC	7717	FLAP, 24 X 27 45 DEG, RH ANTI-SAIL BLK

All 100 units were included in campaign 01-TS2

14171 Tiltstop Campaign Kits Non-Hinged were installed on these units.

14171 Included Tiltstop Gussets - Roadside and Curbside.



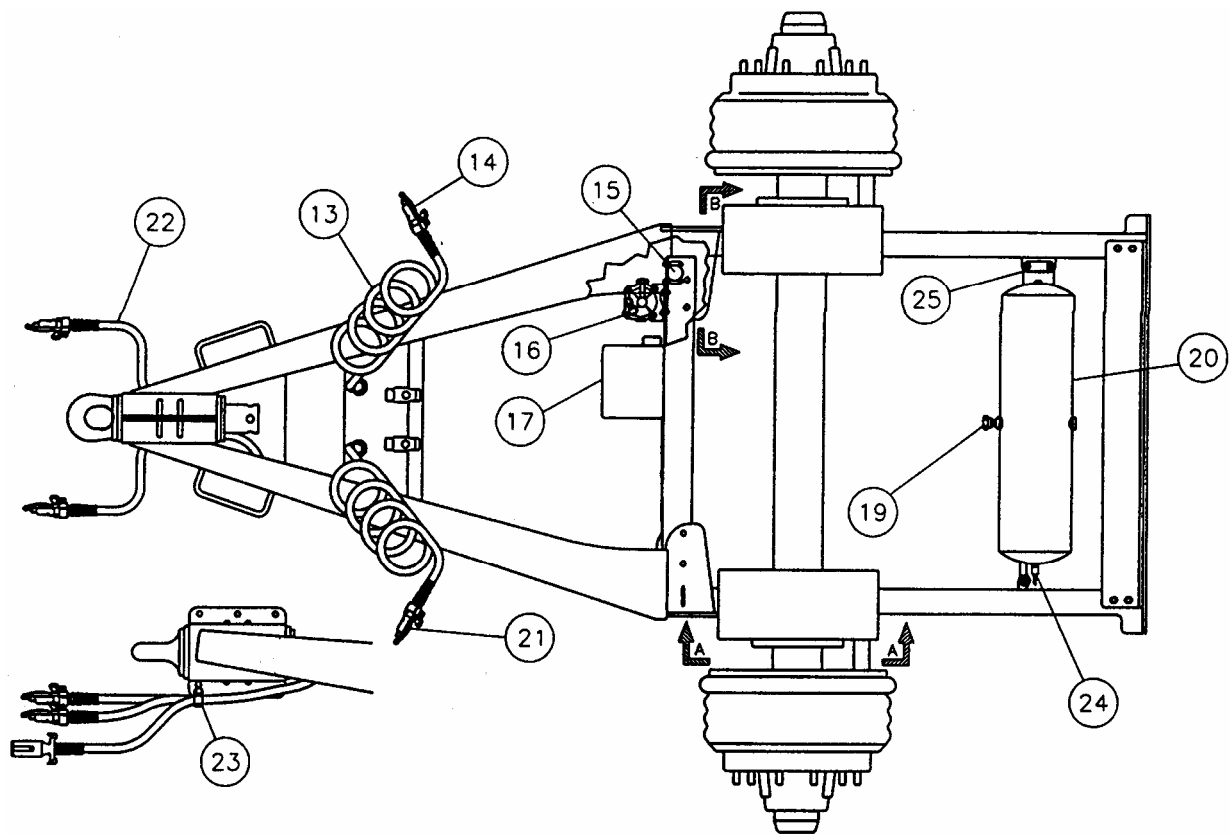
MODEL *Fifth Wheel*
VAST - 20

Item	Part Nbr.	Description
9	3432	TRIP BLOCK KIT, LH, W/SPRING & FASTENERS
10	13648	5TH WHEEL TABLE ASSY, LH RELEASE, (ROADSIDE) FLAT CAST LH
11	8820	NUT, 1/2-13 UNC, TOP LOCK, JAM, HX, GR 5, PLTD
12	8944	JAW ASSY, HUCKED PUSHROD, LH
13	1477	LEVER, JAW, LH
14	1150	WASHER, 1/2, FLAT, SAE, PLTD
15	1601	NUT, 1/2-13 UNC, HX, FIN, GR 5, PLTD
16	8368	SPRING, JAW, 12-3/8"
17	1473	CAPSCREW, 1/2-13 UNC X 2-1/4, HX, GR 5, PLTD
18	7818	HANDLE, PULL, LH, 36" TABLE
19	1342	GUIDE, PUSHROD
28	1123	SPRING, TRIP BLOCK

5TH WHEEL SERVICE KIT COMPONENTS

P/N 7987 - LH

- | | |
|-------------------------|--------------------------|
| 1- TRIP BLOCK SPRING | 1- CAPSCREW, 1/2 X 2-1/4 |
| 1- TRIP BLOCK | 2- NUT, 1/2, TOP LOCK |
| 1- JAW W/HUCKED PUSHROD | 1- NUT, 3/8, METAL LOCK |
| 1- JAW SPRING | 2- WASHER, 1/2, FLAT |
| 1- CAPSCREW, 3/8 X 5 | 2- WASHER, 3/8 |

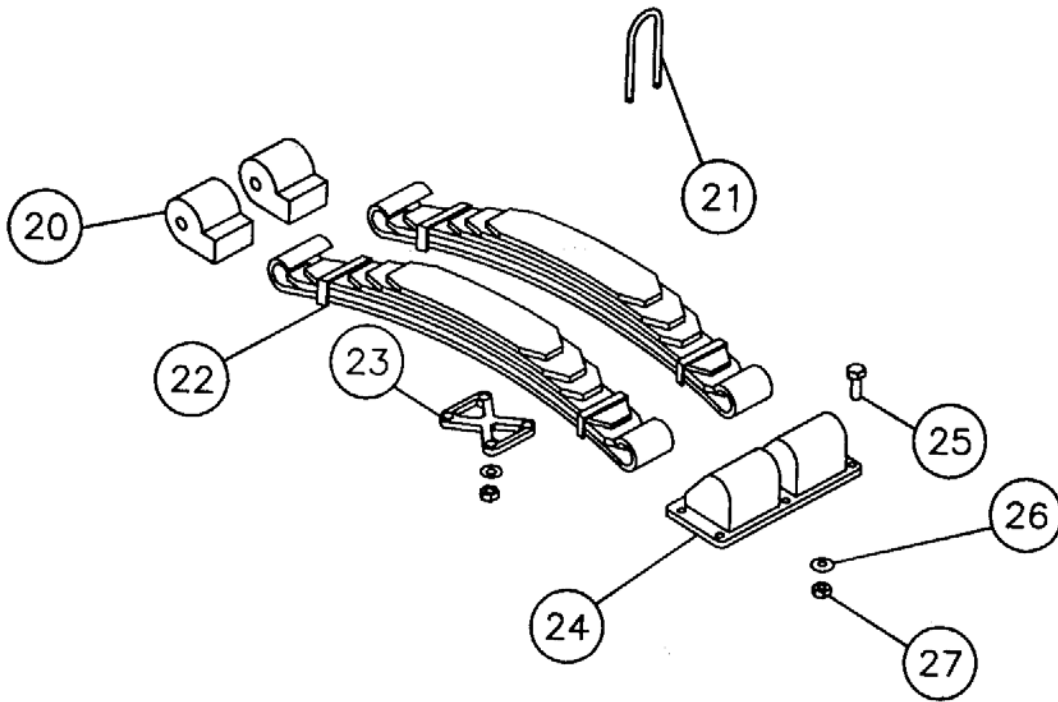


MODEL VAST - 20

Air System

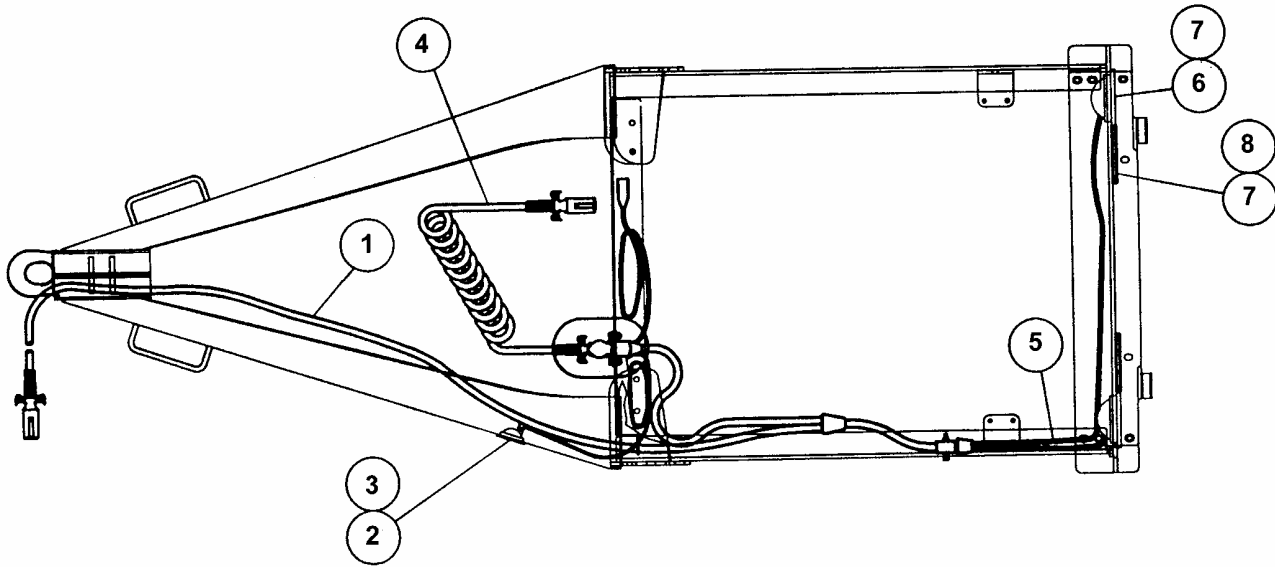
Item	Part No.	Description
13	4081	HOSE, AIR, COILED, 12' WORKING LENGTH, 6"/12" PAIR
14	5854	GLADHAND, SERVICE, W/FULL FACE BLUE SEAL
15	6294	PRESSURE PROTECTION VALVE, PR-3, BENDIX
16	6688	VALVE, RELAY, R-12P WITH BRACKET
17	13342	MCE-30 ANTILOCK ASSY (ECU) BENDIX PLC
19	1772	VALVE, CHECK, SC-3, 1/2" NPT, BENDIX
20	8913	AIR RESERVOIR, SIDE DRAIN, PDR COAT, MIDWEST, 1425 CI
21	5855	GLADHAND, EMERGENCY, W/FULL FACE RED SEAL
22	6213	HOSE, AIR, 3/8 X 49, RUBBER, 1/4 X 1/2 CONN (Other Sizes Available)
23	12181	KIT, 3 HOLE CLAMP W/S-HOOK
24	1775	VALVE, DRAIN, LEVER, 150 PSI, 1/4" NPT-M
25	7452	ISO-PAD/FASTENER KIT FOR MOUNTING AIR TANK
NS	6294	VALVE, PRESSURE PROTECTION, PR-3 BENDIX
NS	1278	VALVE, PUSH-PULL, PP-1
NS	13344	ECU PIGTAIL FOR MC-30 W/ DIAGNOS CONN, HARNESS
NS	1181	BULKHEAD FITTING, BRASS

*If built with MCE-12 they will need 13342, 13345, 13346



SUSPENSION

Item	Part No.	Description
20	1204	BUSHING, SPRING BOOT, RUBBER, PAIR
20	12172	BUSHING, SPRING BOOT URETHANE, PAIR
21	1169	U-BOLT ASSY, 1 X 4 X 9, RT, W/NUTS & WASHERS
22	16708	SPRING ASSY, 7 LEAF W/ LONG REBOUND LOW ARCH
23	11779	PRESSURE PLATE, CENTER HOLE FLAT DUCTILE IRON
24	15398	DOUBLE BOOT HOUSING, DUCTILE IRON A536
25	3547	CAPSCREW, 5/8-11 UNC X 3 HX, GR 5, PLTD
26	1172	WASHER, 5/8, FLAT, F436, HRND, PLTD
27	1164	NUT, 5/8-11 UNC, METAL LOCK, HX, GR C, PLTD



MODEL VAST - 20 *Electrical*

Item	Part Nbr.	Description
1	10112	HARNESS, FRONT WYE, SEALED, 132" ABS
2	9562	LENS, AMBER, TRUCKLITE, ABS
3	9563	GROMMET, LAMP, TRUCKLITE, MODEL 30
4	10327	CABLE, 7-WAY, COILED 12', W/PLUGS, ABS
5	5583	HARNESS, REAR, 4-LIGHT
6	2508	LAMP, RED, GROTE
7	2509	GROMMET, LAMP, GROTE
8	1892	REFLECTOR, 4" RECTANGULAR, SHATTER PROOF, RED