



**SILVER EAGLE**  
MANUFACTURING COMPANY

5825 NE Skyport Way, Portland, OR 97218  
(800) 547-6792 - (503) 281-0727 - (503) 335-2171 Fax  
[WWW.SILVEREAGLEMFG.COM](http://WWW.SILVEREAGLEMFG.COM)

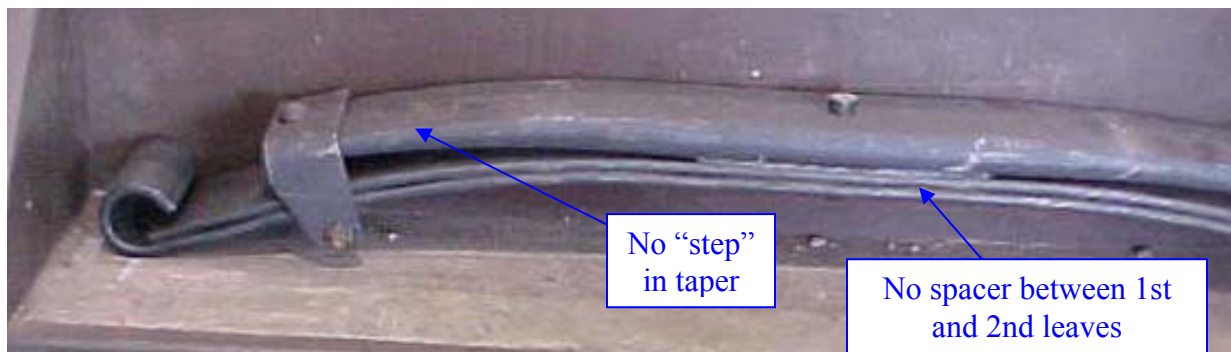
BULLETIN NO.: TB04-002  
DATE: May 5, 2004  
PAGE: 1 of 2

## TECHNICAL BULLETIN

**REFERENCE:** THREE (3) LEAF SPRING MODIFICATIONS, VA DOLLIES, SILVER EAGLE PART# 9631

**BACKGROUND:** In an effort to improve the durability of three leaf springs in certain dolly applications, a series of modifications and sourcing changes were made in late 2003 and early 2004. As before, Silver Eagle recommends the replacement of both springs should one fail. Both springs should be of the same type as outlined below -- this bulletin details the visual differences between the three versions. Please note that new part numbers 9631-S and 9631-F were put into effect May 6, 2004.

Original Silver Eagle part# 9631 , manufactured by Detroit Steel, sold until approximately December 2003, now obsolete and unavailable, use 9631-F (below):



(continued)

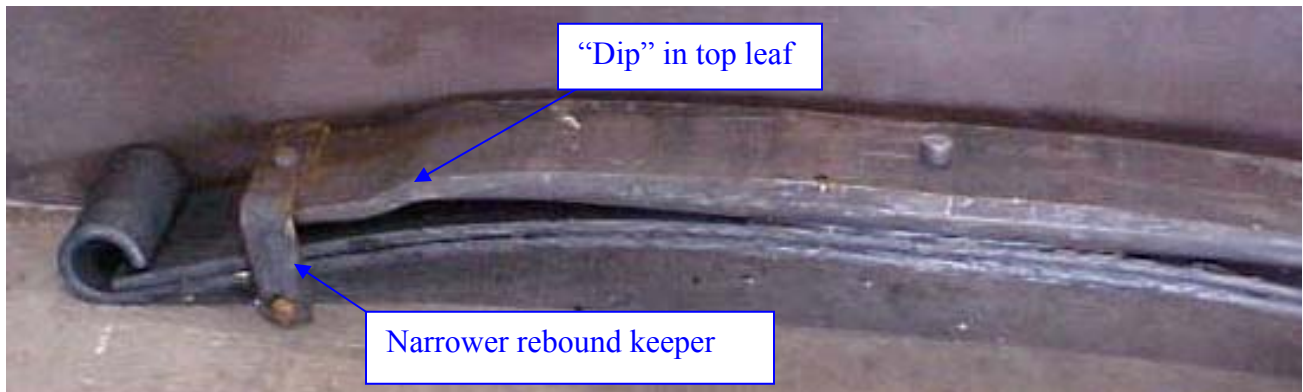


**SILVER EAGLE**  
MANUFACTURING COMPANY

5825 NE Skyport Way, Portland, OR 97218  
(800) 547-6792 - (503) 281-0727 - (503) 335-2171 Fax  
[WWW.SILVEREAGLEMFG.COM](http://WWW.SILVEREAGLEMFG.COM)

BULLETIN NO.: TB04-002  
DATE: May 5, 2004  
PAGE: 2 of 2

Revised part# 9631-S , manufactured by Standen Spring, sold approximately Dec 2003 through Mar 2004 and in limited supply at Silver Eagle:



Current revision, part# 9631-F, manufactured by Detroit Steel, sold after March 2004:

