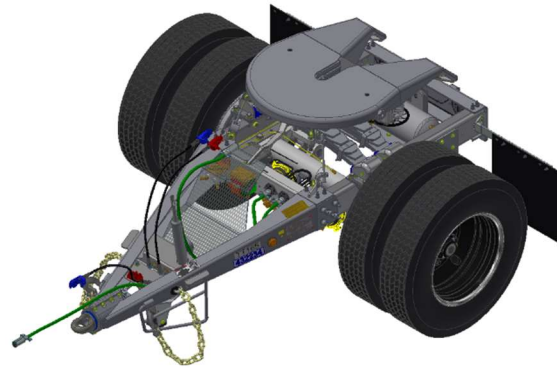


# OPERATION PROCEDURES PARTS & SERVICE MANUAL

As built for  
**UPS**



**SILVER EAGLE MODEL VST20N  
PART #33000**



5825 NE Skyport Way - Portland, OR 97218  
(503) 281-0727 - (800) 547-6792 - (503) 335-2171 Fax  
[www.silvereaglemg.com](http://www.silvereaglemg.com)

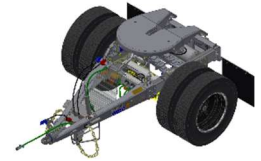
# Table of Contents

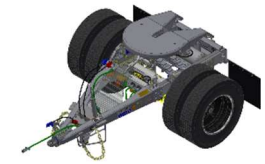
## MAINTENANCE PROCEDURES

Specifications .....	3 – 7
Operating Silver Eagle Fifth Wheel .....	8
Fifth Wheel Maintenance .....	9
Silver Eagle Fifth Wheel – Jaw Removal .....	10 – 11
Trip Block Spring Removal / Installation .....	12
Drawbar Eye Removal / Installation .....	13

## PARTS LISTING

Master Assembly.....	14
Frame Assembly.....	15
Air Assembly.....	16
Electrical Assembly.....	17

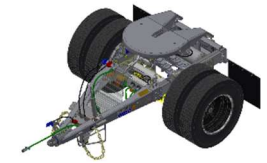




**Vehicle Make:** Silver Eagle  
**Model Year:** 2015  
 Date: July 2, 2014  
 Updated: Steve Sutton  
 SILVER EAGLE PART # 32850 Pilot Date: August 26, 2014

<b>GENERAL:</b>	
MAKE & MODEL:	V2ST-20NU
LENGTH:	OVERALL: 119"
WIDTH:	96" 71-1/2" track
FIFTH WHEEL HEIGHT:	47-1/2"
DRAWBAR LENGTH:	78" Centerline Eye to Axle
HITCH HEIGHT:	17"
OPERATIONAL USE:	HIGHWAY
GAWR:	20,000#
GVWR:	20,000#
TARE WT:	2950# maximum
<b>FRAME:</b>	
DRAWBAR:	1/4" A572-50 Steel drawbars - Huck bolted (Bob Tail) - Gr. 8, 1/2" & 20mm
SIDEFRAME:	3/8" A572-50 Sideframe, crossmembers, and tailframe
SHOCK HSG:	Cast Round type - bolted 1/2" Gr. 8
EYE:	Silver Eagle #1171 w/round polyurethane bushings #12171 & hex nut #15315
LIFT HANDLES:	Two, power zone type
TILTSTOP:	Mounted under tail frame (two 1" Plates)
TAILPLATE:	4 TruckLite round LED lamps riveted & guard for license lamp
LEG:	Replaceable rubber block mounted to drawbar supported brackets Note: tongue weight not to exceed 65lbs w/ hooks on the handles
5TH WHEEL:	Silver Eagle lever operated w/extended ramp & end cap plate Roadside release w/ hitch pin through adjusting rod Tilt Limiting Cables
SUSPENSION:	Polyurethane boot, #12172 mounted, transverse type Use "Never Seize" on U-Bolts and fasteners
SPRINGS:	7-leaf, 2 stage, 38-1/2" center of eye to center of eye
SAFETY CHAINS:	(2) 5/8" grade 70 chains, Zinc Dichromate finish, U-Bolt mounted w/ protector (2) 5 ton clevis hooks Zinc Dichromate finish

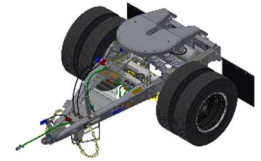
<b>FRAME (cont.):</b>			
AXLE:	Make-Meritor	Model-TN4671 (5" dia.)	Track - 71.5"
	Capacity - 20,000#		Spring Centers - 38-1/2"
	Cambered, set for 1/16" toe-in (+/- 1/32") & 0 deg. Thrust Angle		
	Camshaft enclosure tubes installed at factory.		
S-CAMS:	Q+	28 spline	length: 20.406"
	Part No.:	221058391 (Right)	2210T8392 (Left)
	ABS sensor blocks		
SLACK ADJUSTERS:	Haldex S-ABA 6" slack, 28 spline with 1/8" end play on s-cam, "Never Seize" on stainless clevis pins and splines. Standard yoke. Slack adjusters must be installed to manufacturers specifications, including, but not limited to assuring proper pushrod length to attain approximately 90 degree angle when park brake is applied. Should be 107 degrees when brakes are released. Stroke should not exceed 2" on application. Slack adjusters and brake cam bushings must be fully lubricated after installation.		
BEARINGS & RACE:	Make - General	Option - Timken, Stemco, or SKF	
	Outer bearing HM212011/HM212049		
	Inner bearing HM218210/HM218248		
	Note: bearing and race to be from the same manufacturer		
SPINDLE NUT	STEMCO Pro-Torq #447-4743		
HUBS:	* This build	Walther EMC cast iron hub and cast iron drum assembly	w/ ABS tone ring
		Option: Webb	Hub to be e-coated and balanced
DRUMS:	* This build	Walther EMC cast iron hub and cast iron drum assembly	w/ ABS tone ring
		Option: Webb, Motor Wheel, Meritor	Hub to be e-coated and balanced
STUDS:	10 each mounted on 11.25" bolt circle, Hub Piloted		
HUB CAPS:	* This build	SKF #1644 - Black with magnetic plug	Option: Stemco DEFENDER
HUB OIL:	Synthetic - MOBILUBE SHC 75W90		
OIL SEALS:	Federal Mogul # M380025TXO - 5 Star Gold seal - hub installed Seals must be press installed with approved method - Do not drive with hammer		
BRAKE LINING:	Q+ Abex - 3030-197 OEM & 6008-1(Meritor SOR-215)	Size - 16.5x7x.75	
	Q+ pull-back springs		
CHAMBERS:	Make: Haldex	Service Chambers Part # ?' 127300116	Life Seal - Long Stroke
	Set brake chambers to 107 degrees when brakes are not applied. Chambers should be approximately 90 degrees with brakes applied and no more than 2" of stroke. Must be long stroke actuator.		
<b>TIRES:</b>			
		Tires to be inflated to 100 p.s.i..	
TIRES:	Bridgestone R197	TUBELESS SIZE: 295/75R22.5	PLY RATING: 14(G)
	Goodyear G 316 Fuel M	TUBELESS SIZE: 295/75R22.5	PLY RATING: 14(G)
	Michelin XT1, X Line En	TUBELESS SIZE: 295/75R22.5	PLY RATING: 14(G)
	* This build Yokohama RY587	TUBELESS SIZE: 295/75R22.5	PLY RATING: 14(G)
	Continental HTL Eco	TUBELESS SIZE: 295/75R22.5	PLY RATING: 14(G)
	* Tires should be "SmartWay" approved.		
	Tires to be inflated to 100 psi		
	Dimple to the deep dish side of the wheel along with the DOT date		
	Match mount if capable		

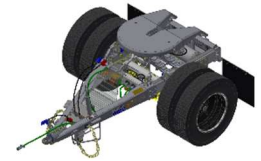




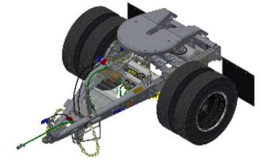
**RUNNING GEAR:**

WHEELS:	Accuride # 50487PKBLK21, size 22.5" x 8.25" Hub Piloted
	* This build Option: Maxion # 90262BK
	Steel - powder coated black
	Outboard mount, (5) hand hole Wheel offset - 6.625"
	Do not paint powder-coated wheel except exposed rim edge to be painted silver
	Apply grease to hub piloted wheel pads before assembly
	Position hub pilot pad to 12 o'clock position before installing wheels
VALVE STEMS:	Myers TR572-F19 (31 degree bend) with Alligator V2B flow through valve stem cap - part #21534 torque to 35-55 inch-pounds
(Option) VALVE STEMS	Dill, Haltec or Schrader equivalent
ABS SYSTEM:	Bendix 2 sensor - 1 modulator, TABS-6 valve #5014112 service relay valve (S/E 16838)
	Bracket mounted includes odometer & PLC4TRUCKS
	ECM to be programmed preceding with 4 zero's, followed by the unit number
PRESS. PROTECT. VALVE:	Sealco #110257
SYNCRO VALVE:	Bendix SV-4 # w/ #28435 breather on exhaust port
PUSH/PULL VALVE:	Sealco #17620 - No pop-off pressure feature with steel stem
	Install push pull protection bracket
PILOT RELAY VALVE:	Bendix R-12P #109424
EMERG. CONTROL VALVE:	Sealco #110376
RESERVOIR:	(1) Make: Hoosier 1423 cu.in. with side drain
DRAIN VALVE:	(1 ea.) Tramec #35000 with 1/8" cable plastic coated routed to roadside frame by front of tire
TUBING:	Parker, Red for emergency, Blue for Service, Black for supply from reservoir
HOSES:	3/8" rubber w/ strain guards
	(1) 36" on service side to lead trailer
	(2) 96" (service & emergency) to towed trailer mounted on vertical surface of front crossmember below upper flange of drawbars
GLADHANDS:	Phillips Universal Cast #12-41010
	(1) fixed, mounted on drawbar, w/ polyurethane seal - painted red (incoming air)
	(1) on 36" whip hose, w/ polyurethane seal- painted blue (incoming air)
	(1) on 96" hose, w/ polyurethane seal - painted red (to towed trailer)
	(1) on 96" hose, w/ polyurethane seal - painted blue (to towed trailer)
	All gladhand seals to be full face (flapper) with screens





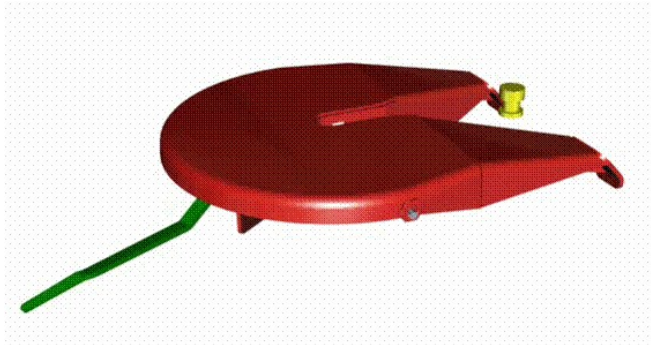
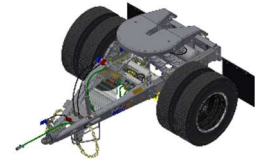
<b>FINISH:</b>	
FRAME:	Hot Dipped Galvanizing per ASTM A 123/A 123M-97a as separate pieces prior to assembly
FRAME HUCK-BOLTS:	Spot paint bolts with Cold Galvanizing spray
AXLE, AIR RESERVOIR, U-BOLTS & FIFTH WHEEL:	Grit blasted, 8 stage zinc phosphate and cleaning E-Coated PPG CF590-534 Black, Epoxy Primer - baked @375 deg. F. Topcoated, HD Acrylic Polyurethane, UPS gray Color to match Sherwin Williams Genesis #G35-32669
LEAF SPRINGS:	Primed & topcoated w/ Acrylic Polyurethane
ALUMINUM, BRASS, NYLON, RUBBER, CHAIN & HOOKS:	Manufacturer's finish
FASTENERS:	Zinc Plated
<b>LIGHTING / ELECTRICAL :</b>	
INTERVEHICLE CABLES:	(1) Phillips 7 ft. straight cable - 8/10/12 Ga. Wiring (1) Phillips 11 ft. straight cable - 8/10/12 Ga. Wiring
FRONT RECEPTACLES:	(2) Phillips #16-726 plug-in type w/ split pins
HARNESS:	Phillips QCS molded assembly with full 8/10/12 cable between receptacles w/ lead to ABS valve , and rear sill. Connectors for Trucklite LED lamps built into harness (no jumpers) with shrink tubing at each AMP connector
<b>LIGHTING / ELECTRICAL (cont.):</b>	
LAMPS:	(4) Trucklite #44322R red 6 LED, 4" round, stop tail and turn <span style="float: right;">Anti-theft rings</span>
(ICC/ATA REQUIRED LIGHTING)	(1) Trucklite #30257Y incandescent ABS indicator light mounted in roadside drawbar (1) Trucklite#15219 LED License Lamp w/ pigtail & AMP connector w/ #97032 gasket & #15729 bracket
WIRING PLUG ENDS:	AMP at rear for LED lights
WIRING COLOR CODE:	Black -2 tail lights, Brown License plate light, 2 tail lights. Green-right turn      Yellow-left turn      Red-stop      White-ground Blue-auxiliary      Constant power ABS function on blue
REFLECTORS:	Mfg. standard as required by law
GROUND:	Stainless steel ground strap between fifth wheel pedestal and rear frame (eye grounded to frame by stainless steel retaining cable) Note: Dielectric lube is to be applied to all connections and to 7-way receptacle. 7-way connectors use dielectric grease, LED lamp pins to be lightly coated



<b>ACCESSORIES:</b>	
MUD FLAP:	Anderson aerodynamic 24" x 18" Plain black-no logo
HANGER:	Betts Direct Flex Hanger, 25" long - Galvanized. (Vertical mounting bracket is painted) Bracket huck bolted to bar. Locking nuts and fender washer on forward side of flap.
LOOM	Spiral Wrap on wires and brake tubing
PUSH PULL GUARD	Bolt-on Guard to prevent damage to Push/Pull valve and avoid hose hooking on knob.
DOCUMENT BOX:	Aluminum Line #: 23891 Document Holder w/o Clip Grote pouch mounted in document box Additional, laminated copy of registration inserted in document box body Include original of Federal Annual Inspection form in document box, keep a record copy.
DECALS:	Furnish and install unit and car numbers 1-1/2 high on reflective decal onto each drawbar. Furnish and install TT165 New York Thruway decal
None required - remove:	Furnish and install Do Not Sandblast Decal to document box
None required - remove:	Hub Piloted Wheel System decals mounted on side of ballast hanger Fifth Wheel Operation decal mounted to top of curbside drawbar Gladhand storage decal mounted to top of curbside drawbar Hostling Valve decal mounted on center of valve plate
None required - remove:	Accuride Decal mounted inside document box Perform Fed. Annual Inspection (Install document in document box) Install FAI Decal near VIN plate - UPS part number 3416634 - Vomella Graphics Date on FAI decal should be based on a date near time of delivery (Month and Year Only) - do not pre-date Furnish and install 5" UPS logo on curbside drawbar Furnish and install PMI date on record box, letters to be 1.50" high PMI date must be based on a <u>11 month</u> cycle from date of inspection
OTHER:	No manufacturers identification decals or logos Aluminum VIN plate mounted roadside drawbar Additional Vehicle I.D. plate mounted in curbside tailframe Install Mylar tape on backside of license plate - secure with Huck rivets Unit serial number & car number engraved on the curbside drawbar in .50" min. height No Bendix ABS information decal
NOTE:	FAI decals are to be supplied by Silver Eagle
POGO STICK/BASKET:	Pogo stick to be installed on valve plate and expanded metal basket to be installed between frame - pogo stick Phillips #17-0201 Gold Chromate finish or equivalent Pogo stick to include two 6" springs w/ 4 hole clamp
PARTS BOOK	Furnish an electronic parts book for this build. Parts book information will be loaded on a UPS internal web based parts program (FleetCross).



# SILVER EAGLE FIFTH WHEEL OPERATING INSTRUCTIONS



## Coupling

1. Make sure jaw is locked open and trailer is at proper height.
2. Back dolly slowly under trailer until jaw locks kingpin and handle moves to the center of the dolly.

## Uncoupling

1. With vehicle at rest in a relaxed condition and landing gear down, (not being pushed together or pulled apart), pull fifth wheel handle upward and outward to lock the fifth wheel open.
2. Pull dolly slowly out from under the trailer.

## Note

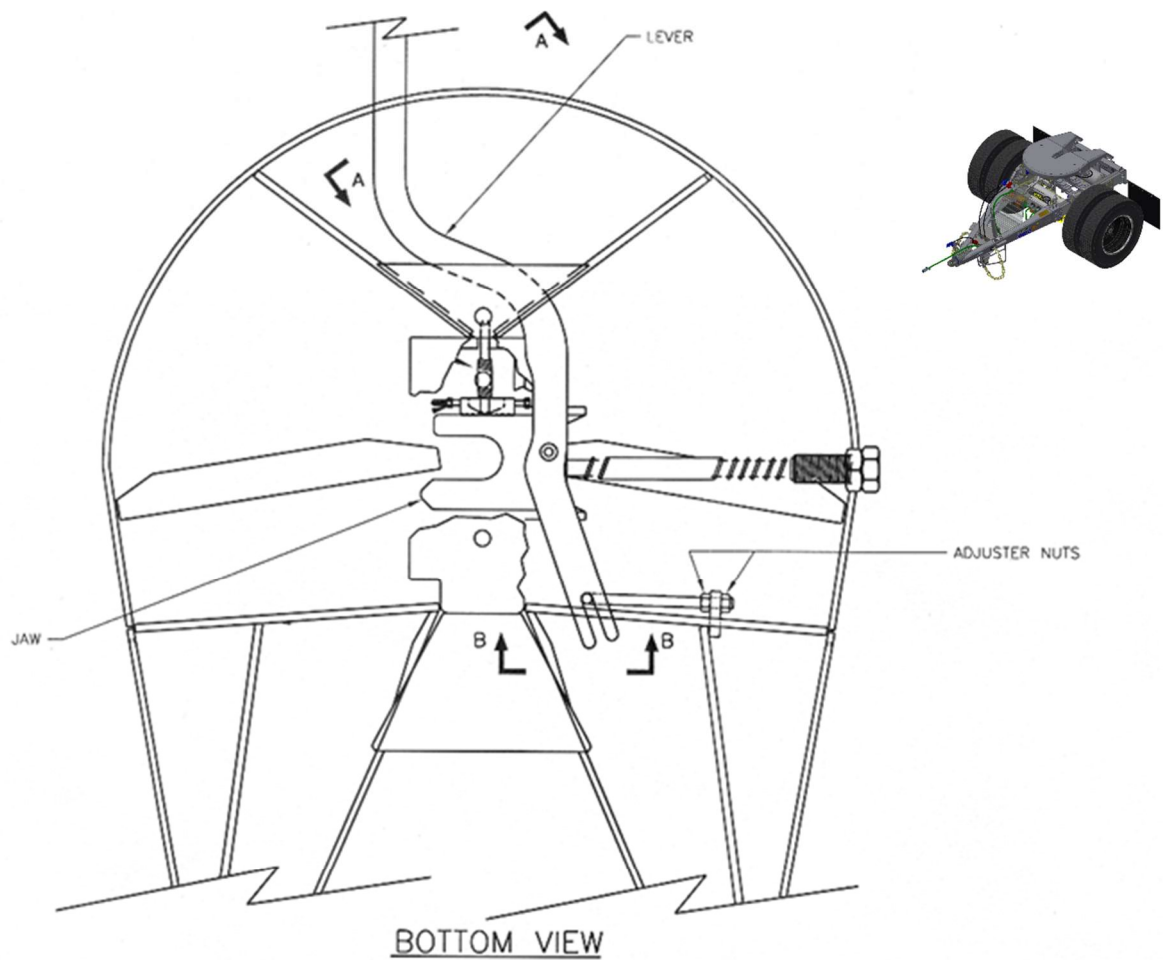
If the handle will not pull outward when the vehicle is in a relaxed condition, use landing gear to raise trailer and unload the dolly fifth wheel.

**Contact Silver Eagle Customer Service  
for a video tape on coupling and uncoupling twin/double trailers  
SINGLE AXLE CONVERTER DOLLY**



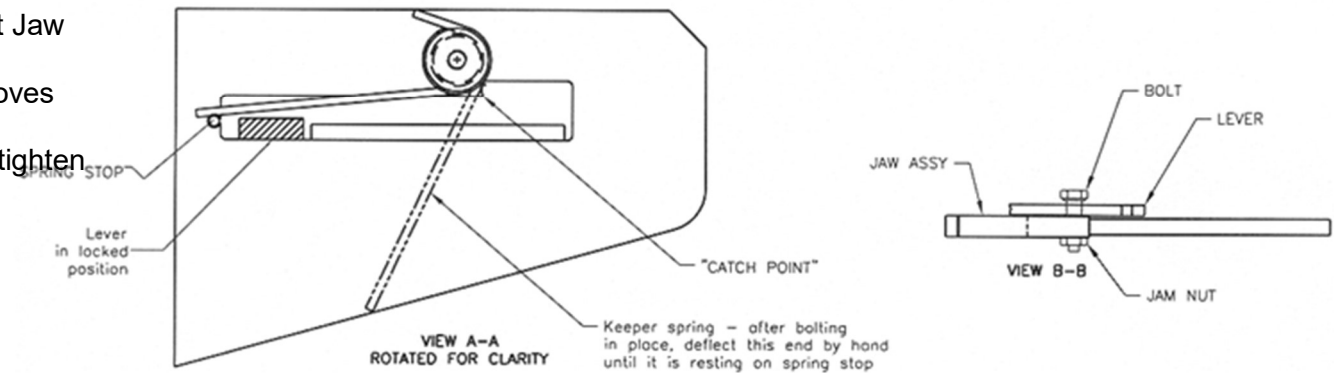
## PERFORMANCE TESTING/ADJUSTMENTS

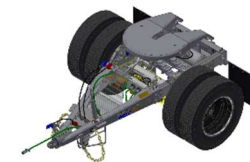
1. Pull the lever into the uncoupling position. This is where the lever is pulled out and held up by the "Catch Point" indicated in view A-A. If the lever won't stay up, the adjuster nuts on the adjuster at the back end of the lever are probably screwed in too far. Back them off until lever will stay on the catch point.
2. Test the 5th wheel for proper coupling with a test kingpin. Test with the lever in the uncoupling position. If it doesn't release from the "catch point", then the adjuster nuts probably need to be screwed in further.
3. With the jaw closed or in the coupled position, pick the lever up and out of the locked position. Hold the lever just shy of falling back into the locked position. Release the lever to ensure that it passes freely into the locked position.
4. When 5th Wheel functions properly, tighten the lever adjuster locknut securely.



## ADJUSTMENT OF LEVER & JAW ASSEMBLY

1. Release Jam Nut (refer to View B-B)
2. Tighten bolt until lever is secure against Jaw assembly.
3. Loosen bolt 1/4 turn or until assembly moves freely.
4. While holding bolt secure from turning, tighten jam nut.

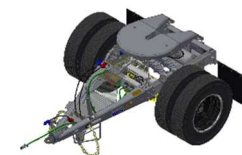




## SILVER EAGLE FIFTH WHEEL MAINTENANCE

### Jaw Removal (Refer to Diagram D)

1. Make sure the jaw is closed. If not, it can be closed by pushing the trip block (16) forward with a rod or bar. The jaw should be all the way across the center casting (the handle will be in). **Caution: Keep your hands clear of the jaw, it is spring-loaded.**
2. Using a pair of vise grips, clamp the trip lock rod in front of the guide hole on 5<sup>th</sup> wheel center casting (16) so as to prevent it from moving aft when jaw is removed.
3. When removing the guide bolt (25), applying an anti-seizing compound to the exposed threads often makes the removal process easier.
4. Remove the jaw spring (22) by pulling it through the push rod guide nut.
5. Pull the fifth wheel lever (19) all the way out.
6. Disconnect the fifth wheel lever (19) from the jaw/pushrod assy (18).
7. Remove the jaw/pushrod assy (18) from the 5<sup>th</sup> wheel table.
8. Lubricate and install the replacement jaw/pushrod assy (18) in the table making sure the pointed tine on the jaw is to aft end of the dolly
9. Slide jaw/pushrod assy in place without spring. Align hole in jaw with mating hole in lever.
10. Apply loctite 242 medium strength thread adhesive or equivalent to cleaned threads of capscrew (23) and jam nut.
11. Thread capscrew (23) into jaw/pushrod assy (18) with two washers (20) between the capscrew head & the lever. Torque the jaw bolt to approximately 70 ft-lbs. The lever should have minimum clearance to allow free rotation against the jaw without binding through its full travel.
12. Tighten the jam nut (1/6-1/4) turn – after contacting the jaw while ensuring the capscrew does not turn.
13. Slide pushrod spring (22) on push rod of the jaw.
14. While holding lever back far enough so the jaw pushrod protrudes into the guide nut, tighten the guide nut (25) securely
15. Remove the vise grips from the trip block rod.
16. Test the table to ensure the jaw opens and closes properly.



### Jaw Spring Removal/ Reassembly (item 22)

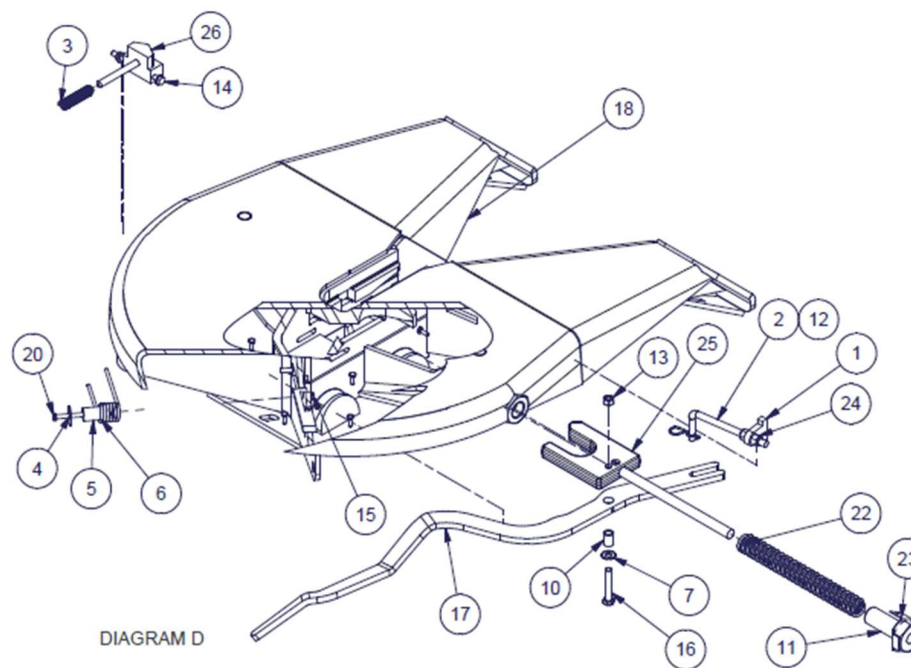
- Complete steps 1 through 4 of Jaw Removal.
- Completes steps 13 through 17.

### Lever Removal/ Reassembly (item 17)

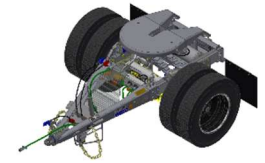
- Remove lever (17)
- During Reassembly make sure the 2" jam nut is jammed to the 2" standard nut.
- Test the table to ensure the jaw opens and closes properly.

### Lever Removal/ Reassembly

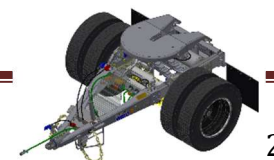
- Complete step 1 & 6 of jaw removal
- Install new lever
- Complete steps 10 thru 12 of jaw removal.
- Test the table to ensure the jaw opens and closes properly.



## **TRIP BLOCK / TRIP BLOCK SPRING REMOVAL / REASSEMBLY**



- Complete steps 1 through 5
- Remove the 3/8 bolt, 3/8 lock nut and the two 3/8 washers
- Release the vise grips. **Caution: The trip block is under spring Pressure. Keep hands clear of it when releasing vise grips.**
- Remove the trip block (16) and the trip block spring through the throat of the 5<sup>th</sup> wheel table. **Caution: The jaw is under spring pressure. Use pliers or another suitable devise to remove old trip block and spring.**
- Install the new trip block and / or trip block spring in the throat of the 5<sup>th</sup> wheel table. **Caution: The jaw is under spring pressure. Use pliers or another suitable devise to install new trip block and spring.**
- Push the trip block (16) as far forward as possible, with a rod or bar and reinstall vise grips to the trip block rod of item (16) in front of 5<sup>th</sup> wheel center casting.
- With anti-seize applied to the 3/8 bolt, reinstall the bolt, two washers and lock nut making sure the trip block can freely move fore and aft when pushing on it with a rod or bar (leaving the lock nut 1/6"-3/32" from being fully tightened should work well).
- Release the vise grips. **Caution: The trip block is under spring pressure. Keep hands clear of it when releasing vice grips.**
- Test the table to ensure the jaw opens and closes properly.





## DRAWBAR EYE REMOVAL & INSTALLATION INSTRUCTIONS

1. Place dolly under a trailer. Set brakes on trailer and dolly.
2. Remove safety wire if present, on 1283 nut.
3. Remove 1283 nut and 1193 washer or 15315 and 15660
4. Use forklift or eye removal tool (Silver Eagle part no. 15314) to pull against drawbar eye and remove it from the shock housing.
5. Clean any debris from inside of shock absorber bushing and lubricate with rubber lubricant or soapy water
6. Lubricate the shock absorber bushing with rubber lubricant or soapy water and install into the shock housing.
7. Lubricate the shank of the new drawbar eye with rubber lubricant or soapy water and install into the shock housing.

**NOTE:** The shank of the drawbar eye will only be able to be pushed into the shock absorber bushings a little way by hand. There are three methods of pushing it in the final amount:

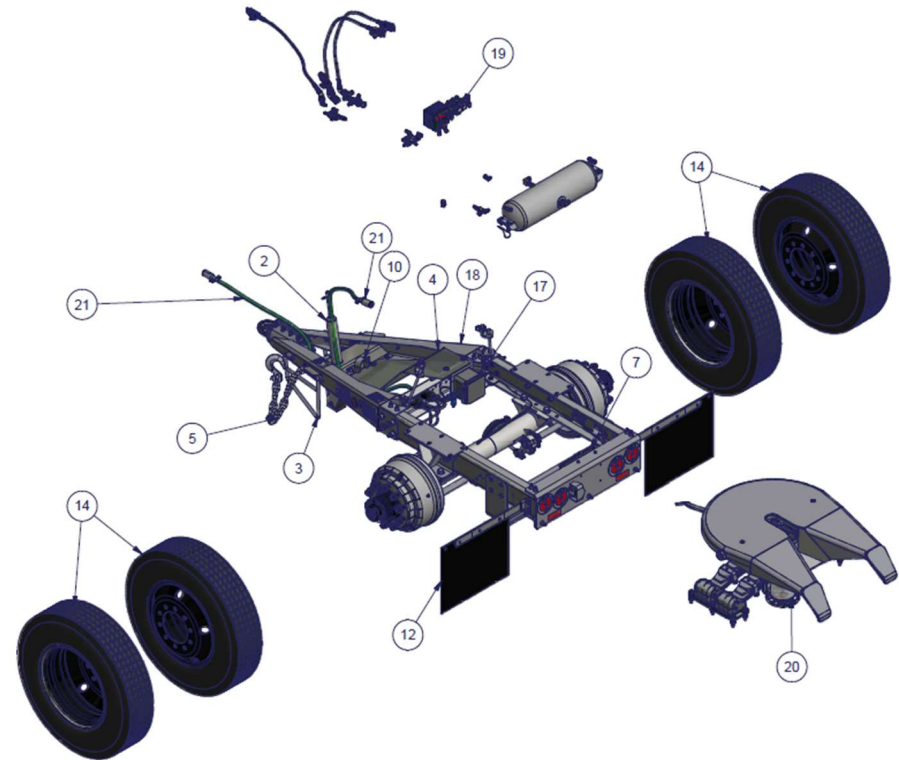
- (1) Place the dolly under a trailer or up against a solid wall. Set the brakes on the trailer and dolly. Use a forklift or hostler to push against the drawbar eye until it is seated on the shock absorber bushing.
  - (2) Use a sledge hammer to hammer on the end of the drawbar eye until it is seated in the shock absorber bushing.
  - (3) Use the eye removal tool as #4 above.
8. After the drawbar eye is in place, clean the threads on the shank. **VERY IMPORTANT:** Coat the threads with Never-SeeZ, pipe compound, or some other similar product. to prevent corrosion and keep the nut from seizing.
  9. Install a new washer and thread the nut onto the shank.
  10. Tighten the nut until the rubber shock absorber bushing bulges toward the outer edge of the shock housing at the corners – this is approximately 400-500 ft/lbs of torque.

**NOTE:** Shock absorber bushing may split if tightened excessively.

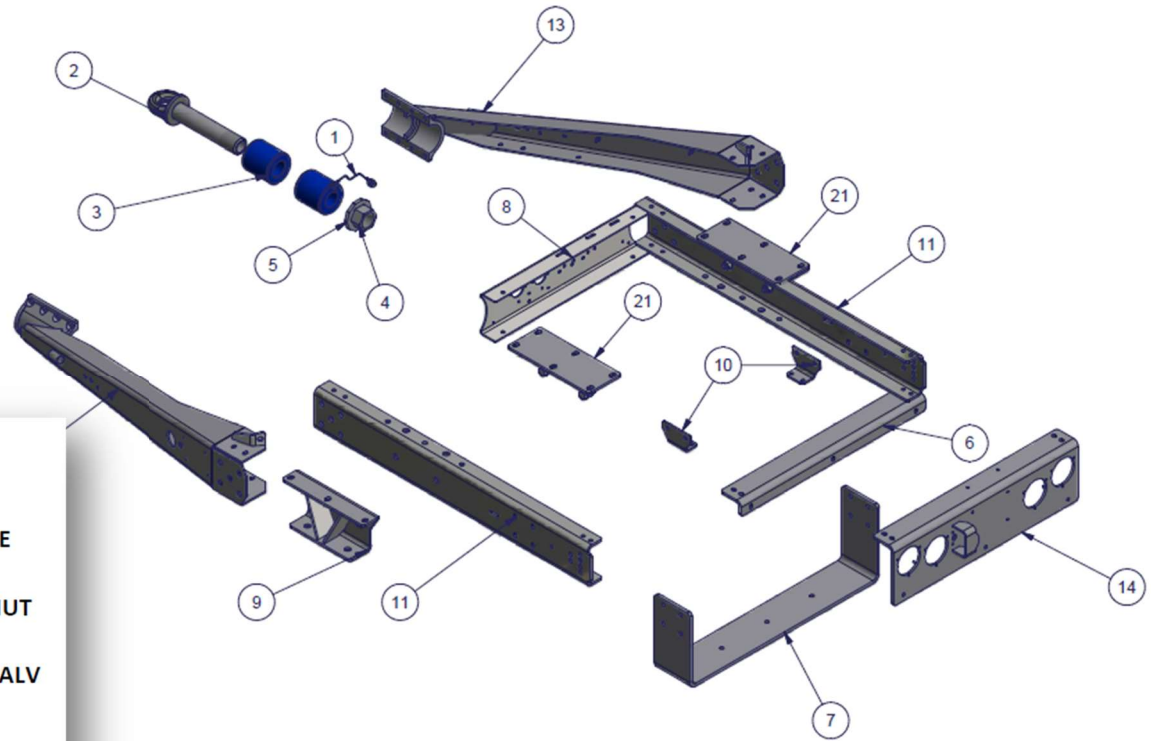
11. Install the safety/ground wire through one side of the nut and shank. This is accomplished by drilling through one side of the nut and shank providing a hole for the bolt and nut securing the safety wire. This completes the ground circuit and prevents the nut from backing off.
12. Periodically check the tightness of the nut and adjust as necessary. You should not be able to turn the lunette eye by hand at any time.

### Master Assembly: 33000

ITEM	QTY	PART	DESCRIPTION
3	1	14015G	INSTL POWER ZONE HANDLE KIT W/BRKT (PAIR)
4	1	14016	Z BASKET INSTALLATION, VA, -10 DEG DWB
5	2	14861	SAFETY CHAIN ASSY 5/8 X 34 W/5T CLEVIS HOOK
7	1	15744	INSTALLATION, REG BOX, ALUMILINE/GROTE UPS
10	1	25118	INSTALLATION, GUARD, PUSH-PULL VALVE
12	1	25976	INSTALLATION, ECO MUD FLAPS UPS
14	4	32885	TIRE/WHL YOK RY587 295/75R22.5, 39.8 UPS PKG
17	1	34069	INSTAL, AUTO TIRE INFL, DUAL, TN, THERMALERT
18	1	34071	MAJOR ASSY V2ST20N -3 X 28 X 78 PSI, UPS GALV
19	1	34077	AIR SYS ASSY TABS6 ABS SEALCO, PSI UPS
20	1	34080	INSTALLATION, INTERLUBE 5TH WHL MNT, VAIL
21	1	34089	ELEC ASSY 2-SOC LED 4-LT UPS VA, GROTE 7-WAY



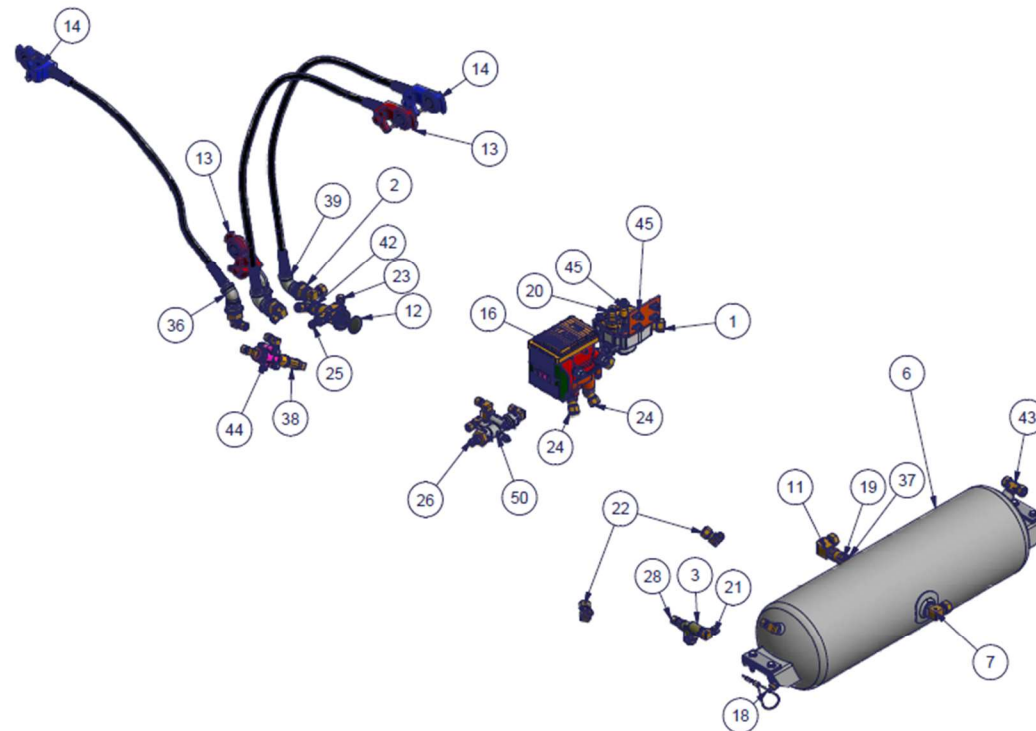
## Major Assembly: 34072



ITEM	QTY	PART	DESCRIPTION
1	1	10970	INSTALLATION, SAFETY WIRE ASSEMBLY, VA
2	1	1171	EYE & SHANK, 3/8, HRDN
3	2	12171	BUSHING, SHOCK ABS ROUND POLYURETHANE
4	1	15315	NUT, SHANK, HEX
5	1	15660	WASHER, SHANK, DRAWBAR EYE, 1/2", HEX NUT
6	1	18780G	ADAPTER, TAILPLATE, VAI, GALV
7	1	18781G	HANGER, BALLAST, 61#, UNDER TANK, VAI, GALV
8	1	18782G	CROSSMEMBER, FRONT, VAI, GALV
9	2	18785G	SIDE SUPPORT WELDMENT, VAI, GALV
10	2	18788G	BRACKET, AIR TANK MOUNT, VAI, GALV
11	2	19159G	SIDE CHANNEL, 78" DL, VAI, GALV
13	1	19981G	DRAWBAR WELDMENT, -10.5 CS, VAI, GALV
14	1	26322	TAILPLATE WLDMT, 4-LT, RS LIC LIT, VAI, GALV
17	1	34074G	DWB WLDMT, -10.5 RS, PSI/ABS, GALV, VAI SHRT
21	2	9439G	SPRING PLATE, SIDE SUPPORT ASSY, VA-DOLLY

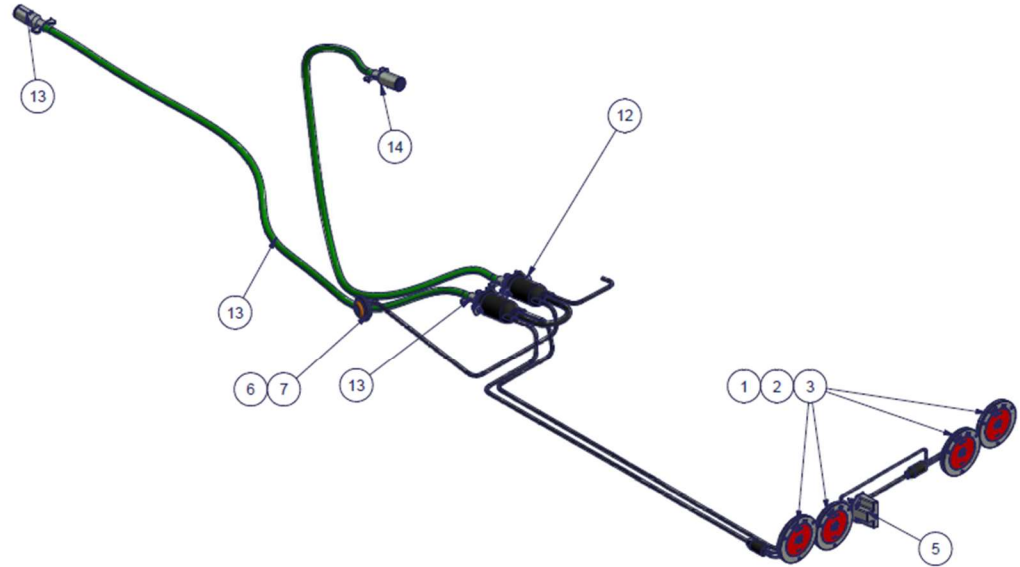
## Air Assembly: 34077

ITEM	QTY	PART	DESCRIPTION
1	2	1027	ELBOW, 45, 5/8T X 1/2 NPT-M, BR
2	4	1181	FITTING, BULKHEAD, 3/8 NPT-F X 1/2 NPT-M, BR
3	1	12582	VALVE, PRESSURE PROTECTION v2 110257, SEALCO
6	1	13390	AIR RES SIDE DRN MIDWEST 1425 CI PFS, GRAY
7	1	13668	ELBOW, 90, 5/8T X 1/2 NPT-M, BR
11	1	14865	ELBOW, 90, 5/8T X 1/2 NPT-F, BR.
12	1	16199	VALVE, PUSH-PULL, SNGL HOLE, BOOT, SEALCO
13	2	16455	GLADHAND UNIV POLY SEAL W/GUARD/SCREEN P RED
14	2	16456	GLADHAND UNIV POLY SEAL W/GUARD/SCREEN P RED
16	1	16836	VALVE, ABS, BENDIX TABS6 (ECU) STD
18	1	1771	VALVE, CABLE DRAIN, W/1/4" NPT-M
19	1	1772	VALVE, CHECK, SC-3, 1/2" NPT, BENDIX
20	4	1804	ELBOW, 90, 3/8T X 1/4 NPT-M, BR
21	10	1805	ELBOW, 90, 3/8T X 3/8 NPT-M, BR
22	3	1806	ELBOW, 90, 1/2T X 3/8 NPT-M, BR
23	1	1809	ELBOW, 45, 3/8T X 1/4 NPT-M, BR
24	3	1811	ELBOW, 45, 1/2T X 3/8 NPT-M, BR
25	1	1814	CONNECTOR, 1/4T X 1/4 NPT-M, BR
26	1	1815	CONNECTOR, 1/4T X 3/8 NPT-M, BR
28	1	1817	CONNECTOR, 3/8T X 3/8 NPT-M, BR
36	1	2846	ELBOW, 45, 1/2 NPT-F, GALV
37	1	2858	NIPPLE, HX, 1/2 X 1/2 NPT-M, BR
38	1	3064	TEE, ST, 1/4 NPT, BR
39	2	4495	ELBOW, 90, 1/2 NPT-F, GALV
42	1	5856	TEE, MALE BRANCH, 3/8T X 1/4 NPT-M, BR
43	1	5894	TEE, MALE BRANCH, 3/8T X 3/8 NPT-M, BR
44	1	6302	VALVE, SYNCHRO, SV-4, W/BRTHR & CHCK VLV
45	1	6688	VALVE, RELAY, R-12P WITH BRACKET
50	1	9858	VALVE, EMERGENCY CONTROL 110376 SEALCO



## Electrical Assembly: 34089





ITEM	QTY	PART	DESCRIPTION
1	4	13280	LAMP RED 4" RD 6-DIODE LED FLG
2	4	11239	RETAINING RING, GROTE LED ECOAT
3	4	9704	SEC RING FOR FLANGE MT LAMP TRUCKLITE 44705
5	1	32963	INSTL, LICENSE PLATE LIGHT KIT, LED
6	1	9562	LENS, AMBER, TRUCKLITE, ABS
7	1	9563	GROMMET, LAMP, TRUCKLITE, MODEL 30
12	1	14880	HARNESS 2 FLANGED SOCK 4 LT LED LIC LIGHT UPS
13	1	34087	CABLE 7-WAY STRGHT 7' W/PLUGS GREEN ABS GROTE
14	1	34088	CABLE 7-WY STRGHT 11' W/PLUGS GREEN ABS GROTE